

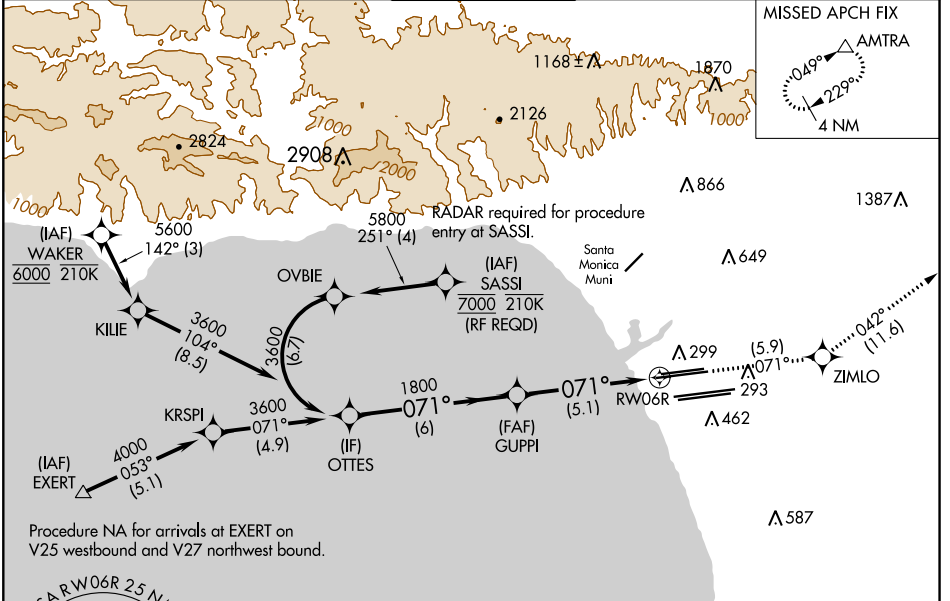
APP CRS <b>071°</b>	Rwy Idg TDZE Apt Elev	<b>9748</b> <b>116</b> <b>128</b>
------------------------	-----------------------------	---

# RNAV (RNP) Z RWY 6R

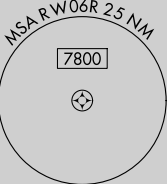
LOS ANGELES INTL (LAX)

<p>For uncompensated Baro-VNAV systems, procedure NA below 5°C (41°F) or above 54°C (130°F). GPS required. Simultaneous approach authorized. For inop ALS, increase RNP 0.30 all Cats visibility to RVR 6000.</p>	<p>MALSR</p>	<p>MISSED APPROACH: Climb to 3000 on track 071° to ZIMLO and on track 042° to AMTRA and hold.</p>
---	--------------	---

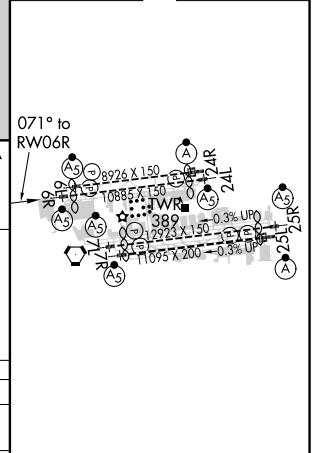
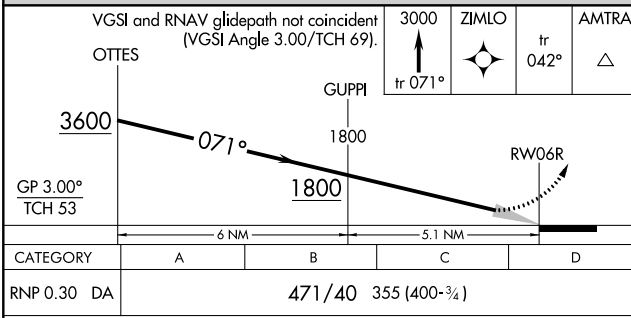
D-ATIS ARR <b>133.8</b> DEP <b>135.65</b>	<p>SOCAL APP CON</p> <p><b>124.3 363.2</b> (APCH FM WEST)</p> <p><b>124.5 235.975</b> (225°-044°)</p>	<p><b>124.9 269.0</b> (090°-224°)</p> <p><b>128.5 360.7</b> (045°-089°)</p>	<p>LOS ANGELES TOWER</p> <p><b>N 133.9 239.3</b> <b>S 120.95 379.1</b></p>	<p>GND CON</p> <p><b>N 121.65 327.0</b> <b>S 121.75 327.0</b> <b>W 121.4 327.0</b></p>	<p>CLNC DEL</p> <p><b>120.35</b> <b>327.0</b></p>	<p>CPDLC</p>
---	---	---	--	--	---	--------------



Procedure NA for arrivals at EXERT on V25 westbound and V27 northwest bound.



ELEV 128	<b>D</b> TDZE 116
----------	-------------------



CATEGORY	A	B	C	D
RNP 0.30 DA		471/40	355 (400-¾)	

## AUTHORIZATION REQUIRED

TDZ/CL Rwy 6R, 7L, 24R, and 25L  
HIRL all Rwy's

SW-3, 06 DEC 2018 to 03 JAN 2019

SW-3, 06 DEC 2018 to 03 JAN 2019