

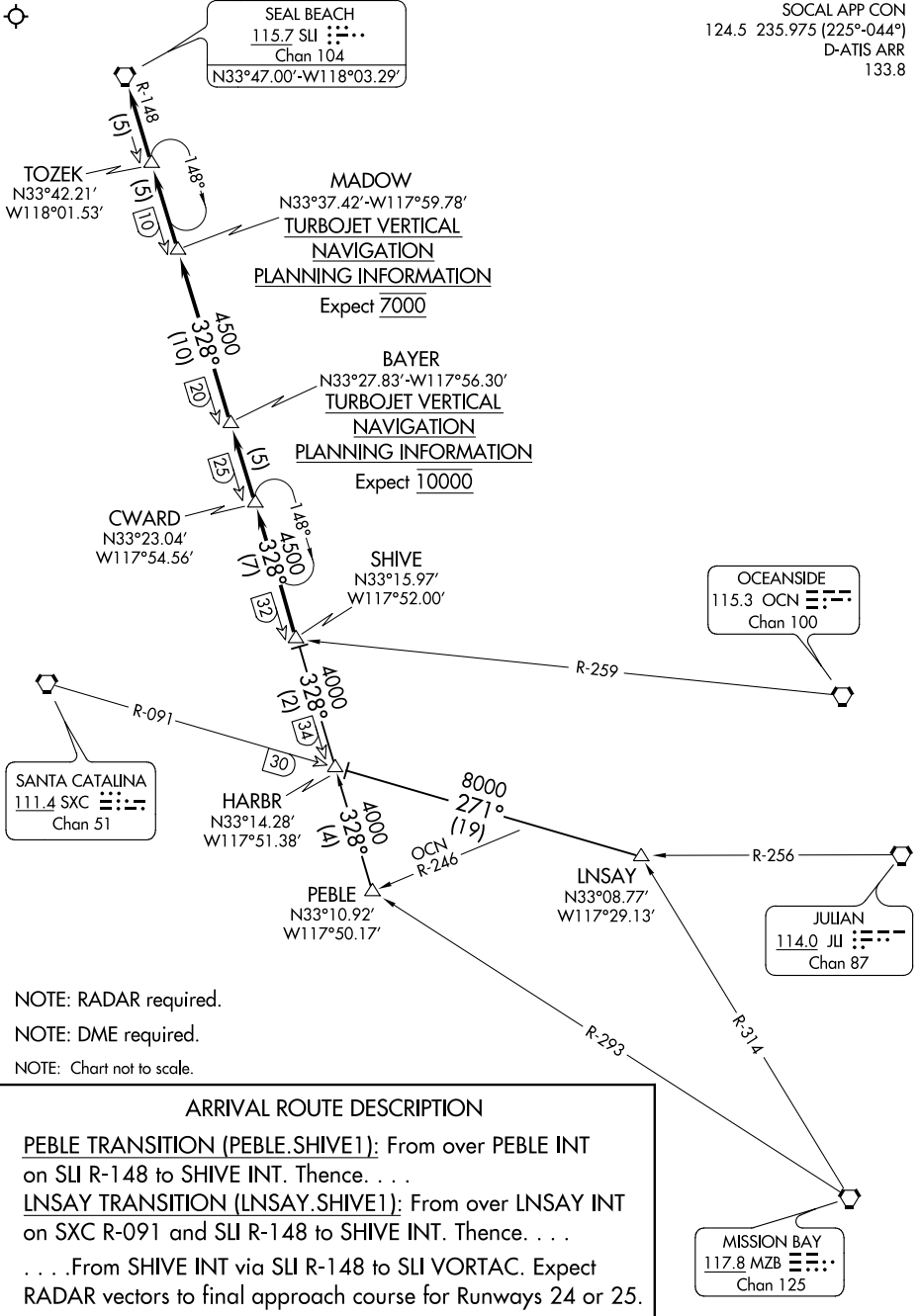
(SHIVE.SHIVE1) 17117

# SHIVE ONE ARRIVAL

AL-237 (FAA)

LOS ANGELES INTL (LAX)  
LOS ANGELES, CALIFORNIA

SOCAL APP CON  
124.5 235.975 (225°-044°)  
D-ATIS ARR  
133.8



SW-3, 06 DEC 2018 to 03 JAN 2019

SW-3, 06 DEC 2018 to 03 JAN 2019

## ARRIVAL ROUTE DESCRIPTION

PEBLE TRANSITION (PEBLE.SHIVE1): From over PEBLE INT on SLI R-148 to SHIVE INT. Thence. . . .

LNSAY TRANSITION (LNSAY.SHIVE1): From over LNSAY INT on SXC R-091 and SLI R-148 to SHIVE INT. Thence. . . .

. . . .From SHIVE INT via SLI R-148 to SLI VORTAC. Expect RADAR vectors to final approach course for Runways 24 or 25.

# SHIVE ONE ARRIVAL

(SHIVE.SHIVE1) 15APR04

LOS ANGELES, CALIFORNIA  
LOS ANGELES INTL (LAX)