

SUMMR ONE DEPARTURE (RNAV)

AL-237 (FAA)

LOS ANGELES INTL (LAX)
LOS ANGELES, CALIFORNIA

SW-3, 06 DEC 2018 to 03 JAN 2019

TOP ALTITUDE:
FL230

TAKEOFF MINIMUMS

Rwys 6L/R, 7L/R: NA - ATC.

Rwys 24L/R, 25L/R: Standard with a minimum climb of 500' per NM to 640'.

NOTE: RNAV 1.

NOTE: RADAR required.

NOTE: STOKD, SCTRR and MCKEY transitions:

DME/DME/IRU or GPS required.

NOTE: DINTY and FICKY transitions: GPS only.

NOTE: Turbojet aircraft only.

D-ATIS DEP
135.65
CLNC DEL
120.35 327.0
CPDLC

GND CON
(N) 121.65 327.0
(S) 121.75 327.0
(W) 121.4 327.0

LOS ANGELES TOWER

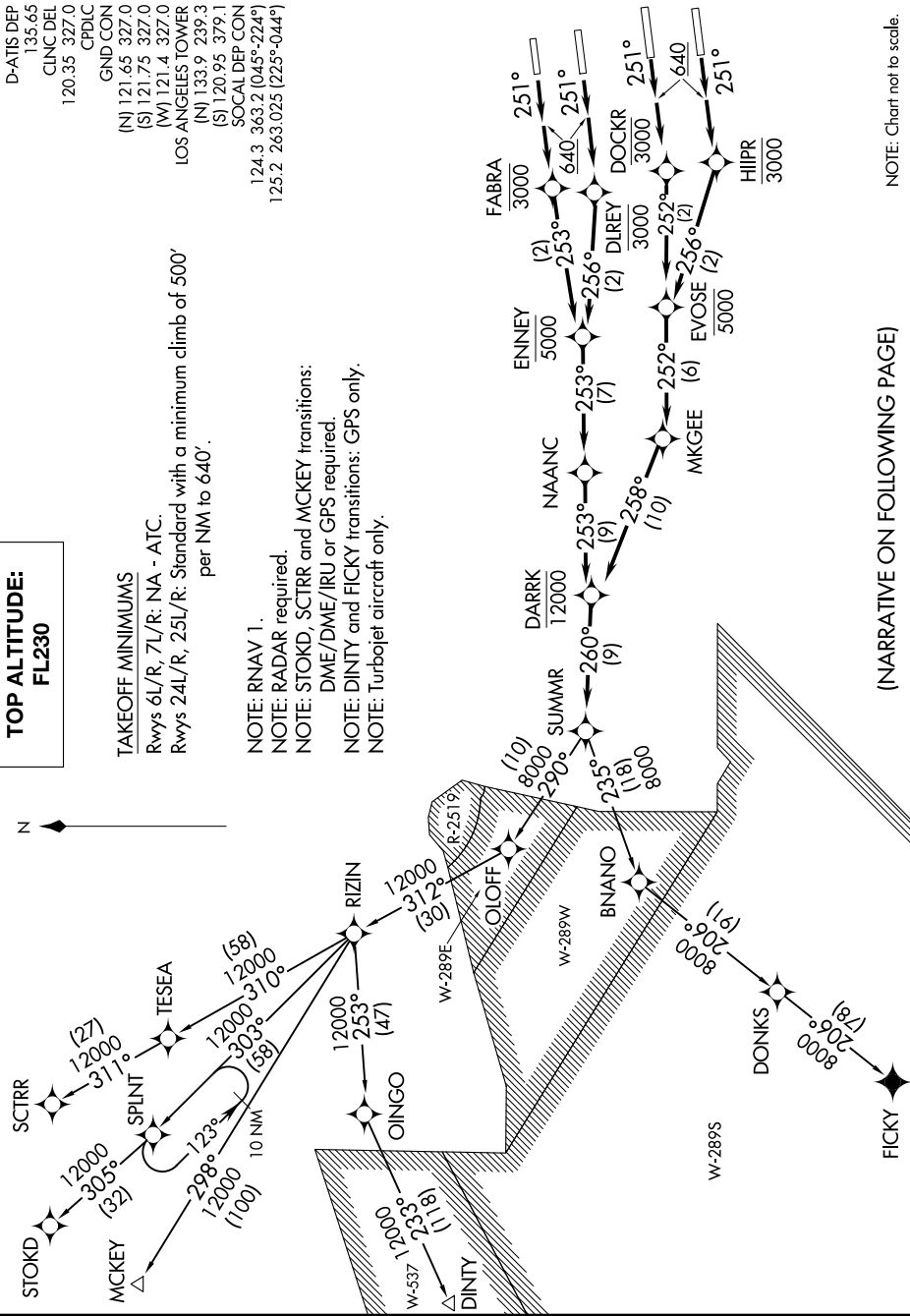
(N) 133.9 239.3

(S) 120.95 379.1

SOCAL DEP CON

124.3 363.2 (045°-224°)

125.2 263.025 (225°-044°)



(NARRATIVE ON FOLLOWING PAGE)

NOTE: Chart not to scale.

SUMMR ONE DEPARTURE (RNAV)

LOS ANGELES, CALIFORNIA
LOS ANGELES INTL (LAX)

SW-3, 06 DEC 2018 to 03 JAN 2019