

# TUSTI TWO DEPARTURE (RNAV)

AL-237 (FAA)

LOS ANGELES INTL (LAX)  
LOS ANGELES, CALIFORNIA

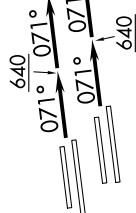
SW-3, 06 DEC 2018 to 03 JAN 2019

**TOP ALTITUDE:**  
17000

**TAKEOFF MINIMUMS**

Rwys 6L/R, 7L/R: Standard with minimum climb of 500' per NM to 640.  
Rwys 24L/R, 25L/R: NA-ATC.

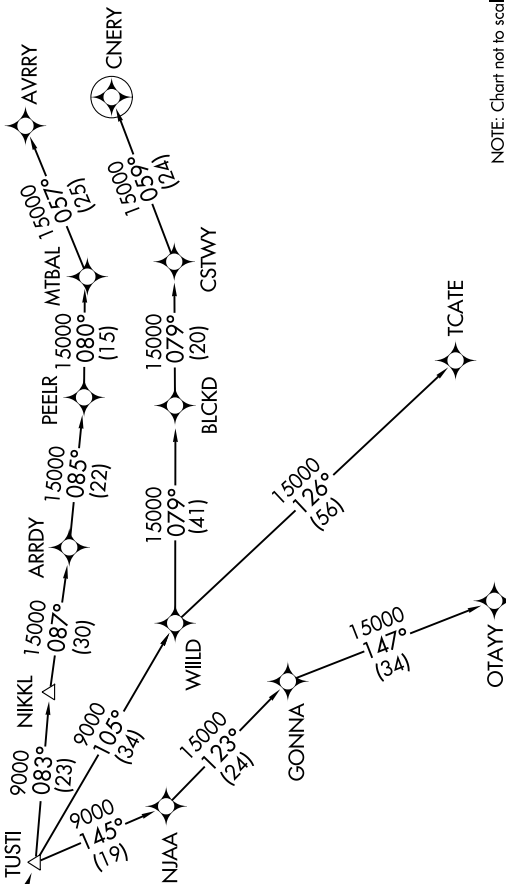
- NOTE: DME/DME/IRU or GPS required.
- NOTE: RNAV 1.
- NOTE: RADAR required.
- NOTE: Turbojet aircraft only.



BUUJI  
10000  
9000 (for Lost Comm)

D-ATIS DEP 135.65  
CLNC DEL 120.35 327.0  
CPDIC  
GND CON  
(N) 121.65 327.0  
(S) 121.75 327.0  
(W) 121.4 327.0  
LOS ANGELES TOWER  
(N) 133.9 239.3  
(S) 120.95 379.1  
SOCAL DEP CON  
(S) 124.3 363.2 (045°-224°)  
125.2 263.025 (225°-044°)

TTRUE  
LVELL  
WURMO



(NARRATIVE ON FOLLOWING PAGE)

NOTE: Chart not to scale.

SW-3, 06 DEC 2018 to 03 JAN 2019