


RNAV (RNP) Z RWY 21R

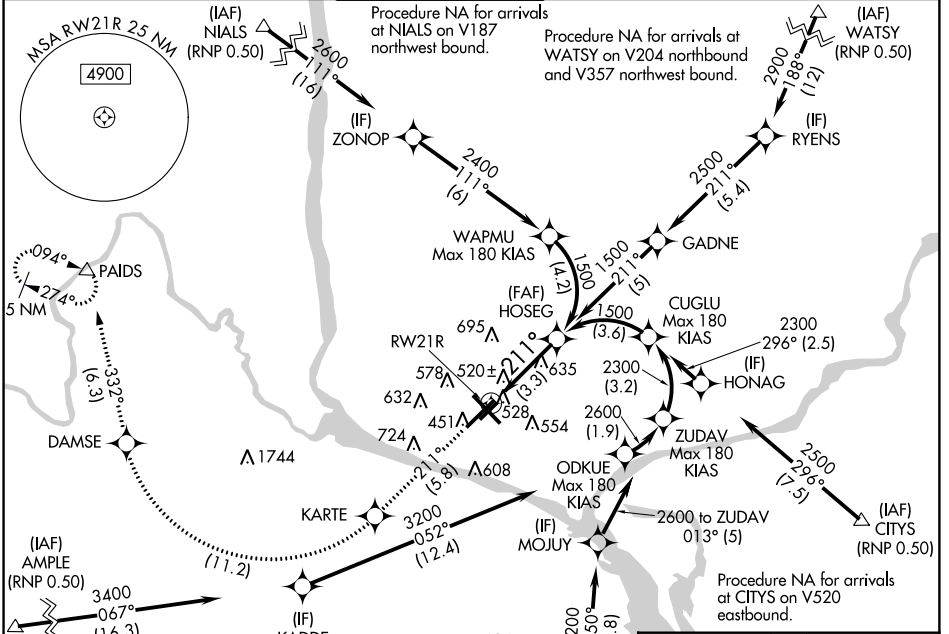
TRI-CITIES (PSC)

APP CRS	Rwy Idg	7111
211°	TDZE	404
	Apt Elev	410

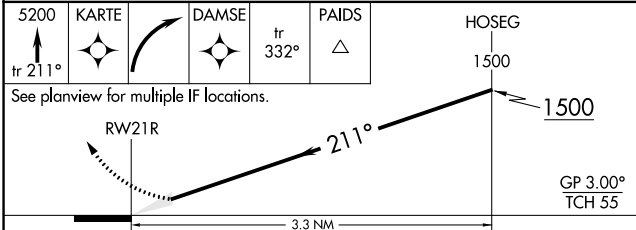
▽ For uncompensated Baro-VNAV systems, procedure NA below -14°C (7°F) or above 54°C (130°F). GPS required. RF required. For inoperative MALSR, increase RNP 0.11 all Cats visibility to RVR 5700 and RNP 0.30 all Cats visibility to 1 3/8 mile.

MALSR

MISSED APPROACH: Climb to 5200 on track 211° to KARTE, right turn to DAMSE, and on track 332° to PAIDS and hold.

ATIS 125.65	CHINOOK APP CON* 128.75 377.2	TRI-CITIES TOWER* 135.3 (CTAF) 0 323.3	GND CON 121.8	CLNC DEL 120.0	UNICOM 122.95
------------------------------	--	---	--------------------------------	---------------------------------	--------------------------------

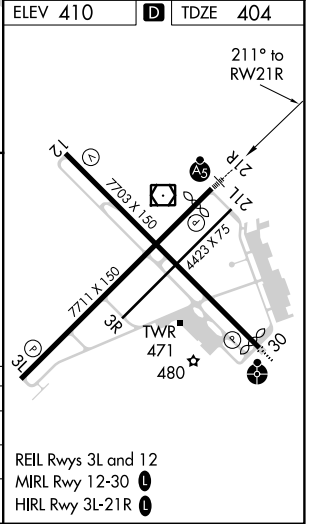


ELEV 410	D	TDZE 404
-----------------	----------	-----------------



CATEGORY	A	B	C	D
RNP 0.11 DA		754/33	350 (400-%)	
RNP 0.30 DA		832/48	428 (500-1)	

AUTHORIZATION REQUIRED



NW-1, 06 DEC 2018 to 03 JAN 2019

NW-1, 06 DEC 2018 to 03 JAN 2019