

WAAS CH 86605 W30A	APP CRS 301°	Rwy Idg TDZE Apt Elev	7503 405 410
--	------------------------	-----------------------------	---

RNAV (GPS) Y RWY 30

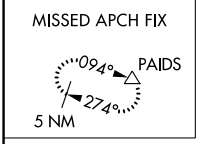
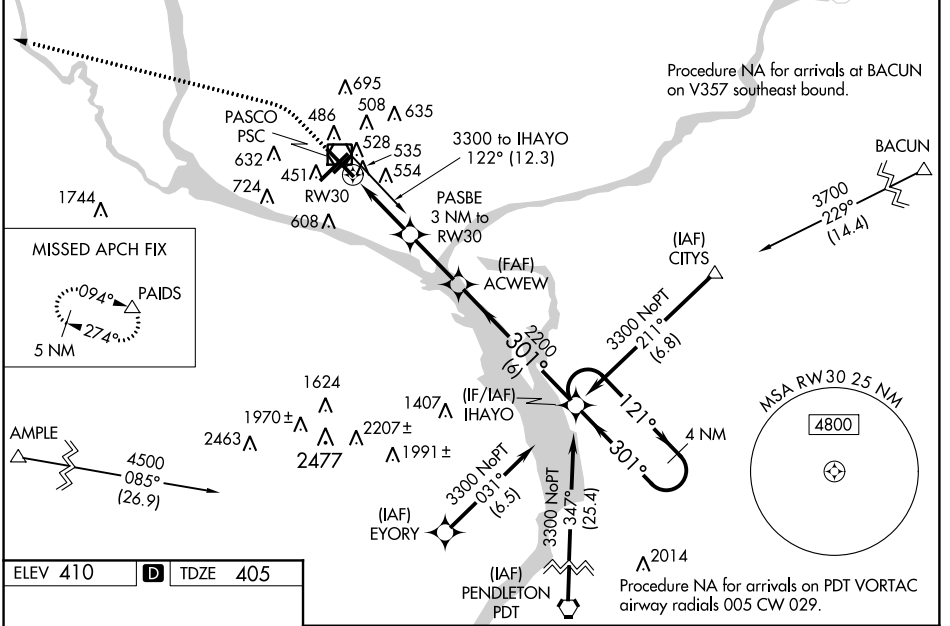
TRI-CITIES (PSC)

Baro-VNAV NA when using Hermiston altimeter setting. For uncompensated Baro-VNAV systems, LNAV/VNAV NA below -1.4°C (7°F) or above 54°C (130°F). DME/DME RNP-0.3 NA. VDP NA with Hermiston altimeter setting. When local altimeter setting not received, use Hermiston altimeter setting; increase all DA 95 feet and all MDA 100 feet. Increase LPV and LNAV/VNAV all Cats visibilities 1/4 mile; increase LNAV and Circling Cats C and D visibility 1/4 mile. Helicopter visibility reduction below 3/4 SM NA.

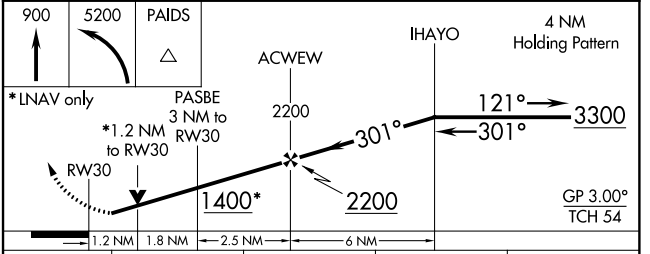
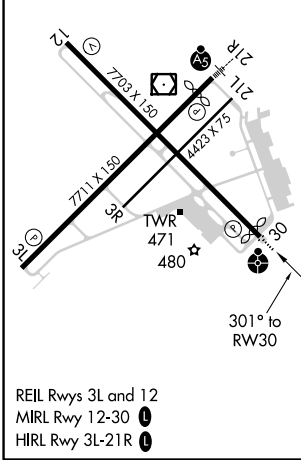
ODALS

MISSED APPROACH:
Climb to 900 then climbing left turn to 5200 direct PAIDS and hold, continue climb-in-hold to 5200.

ATIS 125.65	CHINOOK APP CON* 128.75 377.2	TRI-CITIES TOWER* 135.3 (CTAF) 0 323.3	GND CON 121.8	CLNC DEL 120.0	UNICOM 122.95
-----------------------	---	--	-------------------------	--------------------------	-------------------------



ELEV 410	D	TDZE 405
----------	----------	----------



CATEGORY	A	B	C	D
LPV DA		655-3/4	250 (300-3/4)	
LNAV/VNAV DA		749-1	344 (400-1)	
LNAV MDA	840-3/4	435 (500-3/4)	840-1/8	435 (500-1/8)
C CIRCLING	880-1 470 (500-1)	940-1 530 (600-1)	1040-1/4 630 (700-1/4)	1100-2/4 690 (700-2/4)

NW-1, 06 DEC 2018 to 03 JAN 2019

NW-1, 06 DEC 2018 to 03 JAN 2019