

WAAS CH 40206 W03A	APP CRS 031°	Rwy Idg 7711 TDZE 410 Apt Elev 410
--	------------------------	--

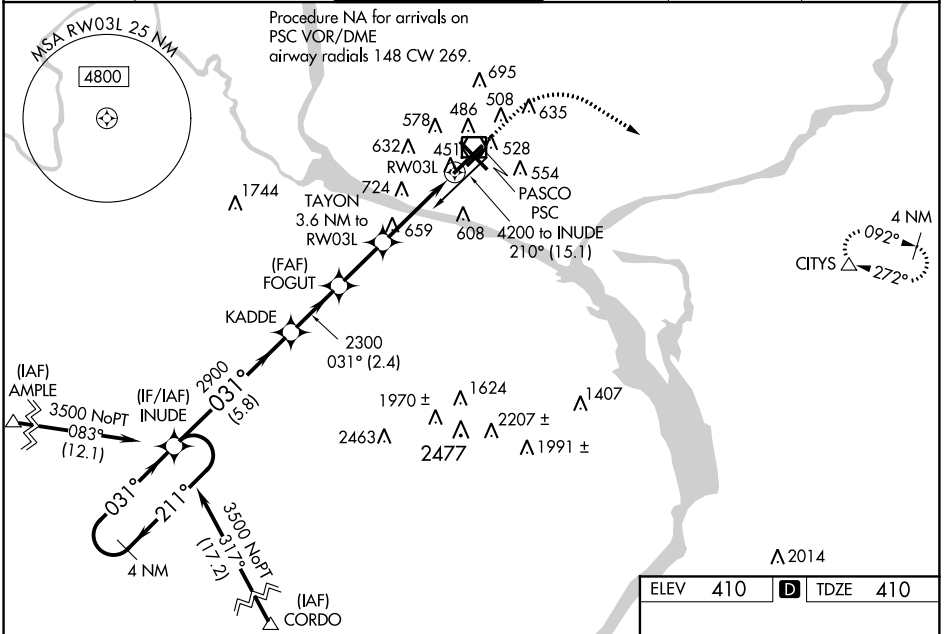
RNAV (GPS) Y RWY 3L

TRI-CITIES (PSC)

⚠ Baro-VNAV NA when using Hermiston altimeter setting. For uncompensated Baro-VNAV systems, LNAV/VNAV NA below -1.4°C (7°F) or above 54°C (130°F). DME/DME RNP-0.3 NA. VDP NA when Hermiston altimeter setting. When local altimeter setting not received, use Hermiston altimeter setting; increase all DA 95 feet and all MDA 100 feet. Increase LPV all Cats visibility ¼ mile, LNAV/VNAV all Cats visibilities ⅓ mile; increase LNAV Cats C and D visibility ⅓ mile. Circling Cat C and D visibility ¼ mile.

MISSED APPROACH:
Climb to 1000 then climbing right turn to 3200 direct CITIES and hold.

ATIS 125.65	CHINOOK APP CON* 128.75 377.2	TRI-CITIES TOWER* 135.3 (CTAF) 0 323.3	GND CON 121.8	CLNC DEL 120.0	UNICOM 122.95
-----------------------	---	--	-------------------------	--------------------------	-------------------------



4 NM Holding Pattern	INUDE	KADDE	FOGUT	TAYON 3.6 NM to RW03L	RW03L
3500	211°	031°	2300	1600	
GP 3.00°					
TCH 45					
	5.8 NM	2.4 NM	2.2 NM	2.1 NM	1.5 NM

ELEV 410	D TDZE 410
----------	-------------------

REIL RWys 3L and 12
MIRL RWy 12-30
HIRL RWy 3L-21R

CATEGORY	A	B	C	D
LPV DA		610-¾	200 (200-¾)	
LNAV/VNAV DA		708-1	298 (300-1)	
LNAV MDA	920-1	510 (600-1)	920-1 ⅜	510 (600-1 ⅜)
C CIRCLING	920-1 510 (600-1)	940-1 530 (600-1)	1040-1 ¾ 630 (700-1 ¾)	1100-2 ¼ 690 (700-2 ¼)

NW-1, 06 DEC 2018 to 03 JAN 2019

NW-1, 06 DEC 2018 to 03 JAN 2019