

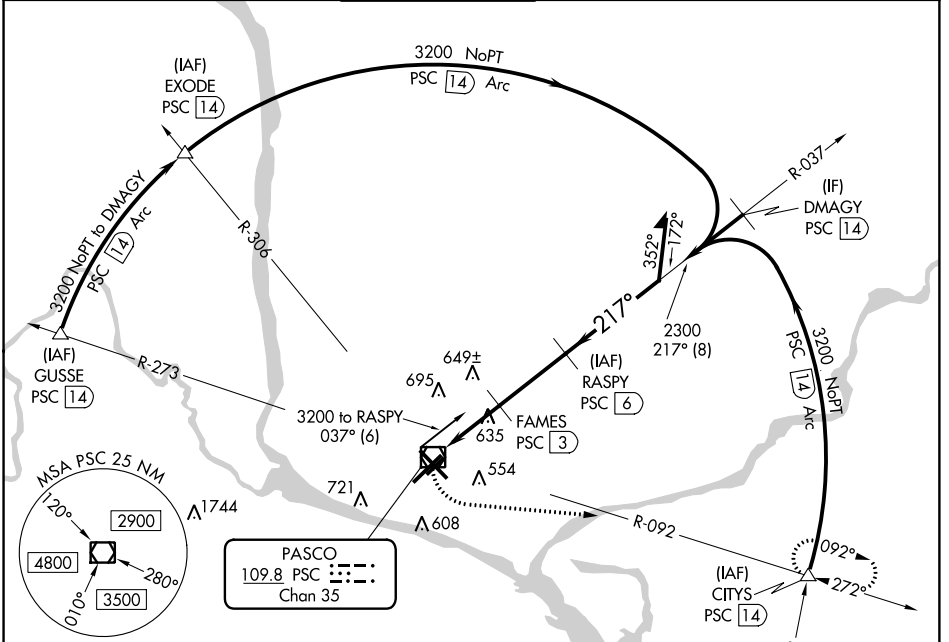
VOR/DME PSC 109.8 Chan 35	APP CRS 217°	Rwy Idg 7111 TDZE 404 Apt Elev 410
---	------------------------	---

VOR/DME RWY 21R

TRI-CITIES (PSC)

<p>▼ VDP NA with Hermiston altimeter setting. When local altimeter setting not received, use Hermiston altimeter setting and increase all MDA 100 feet and increase S-21R Cat C and D and Circling Cat C/D visibility ¼ mile. For inoperative MALSR, increase S-21R Cat C/D visibility to 1 ½ mile</p>	<p>MALSR AS</p>	<p>MISSED APPROACH: Climbing left turn to 3200 on heading 080° and on PSC VOR/DME R-092 to CITYS INT/PSC 14 DME and hold.</p>
---	----------------------------	--

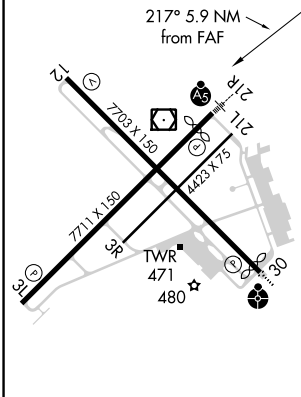
ATIS 125.65	CHINOOK APP CON* 128.75 377.2	TRI-CITIES TOWER* 135.3 (CTAF) 323.3	GND CON 121.8	CLNC DEL 120.0	UNICOM 122.95
-----------------------	---	--	-------------------------	--------------------------	-------------------------



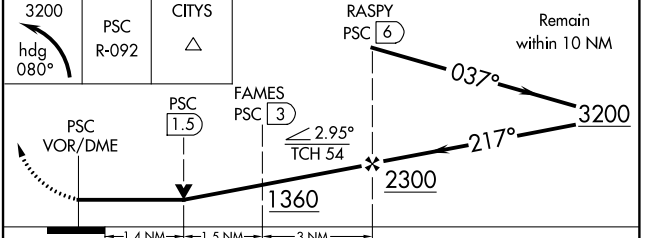
NW-1, 06 DEC 2018 to 03 JAN 2019

NW-1, 06 DEC 2018 to 03 JAN 2019

ELEV 410	D	TDZE 404
----------	----------	----------



REIL Rwy 3L and 12
MIRL Rwy 12-30
HIRL Rwy 3L-21R



CATEGORY	A	B	C	D
S-21R	900/24	496 (500-½)	900/50	496 (500-1)
C CIRCLING	900-1 490 (500-1)	940-1 530 (600-1)	1040-1¾ 630 (700-1¾)	1100-2¼ 690 (700-2¼)