

VOR/DME PSC 109.8 Chan 35	APP CRS 307°	Rwy Idg 7503 TDZE 405 Apt Elev 410
--	------------------------	---

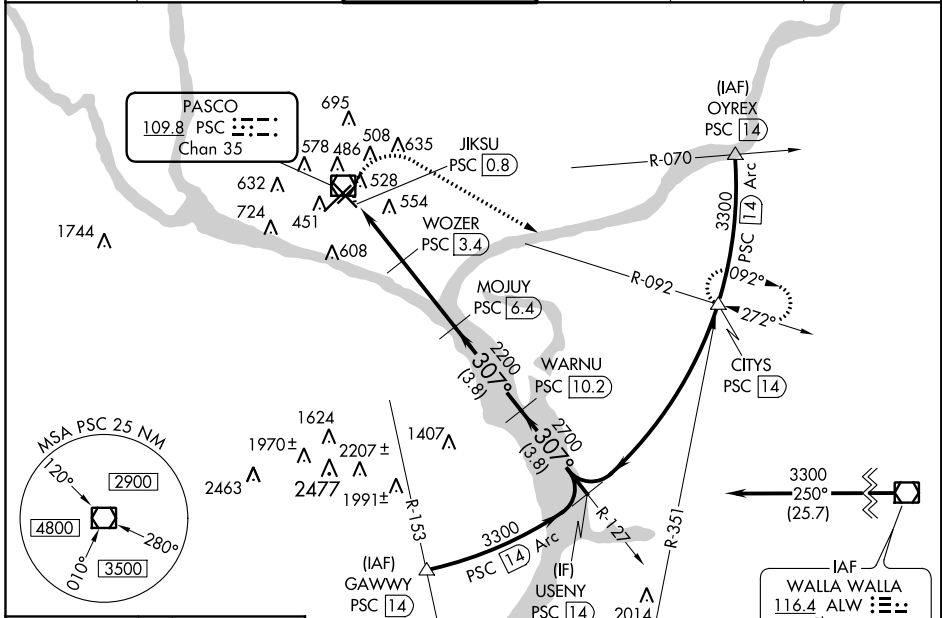
VOR/DME RWY 30

TRI-CITIES (PSC)

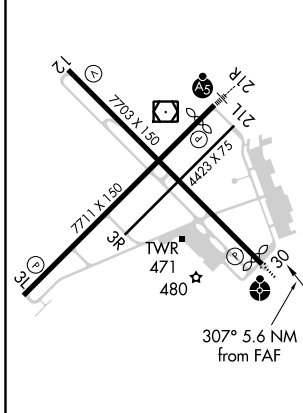
⚠ For inoperative ODALS, increase S-30 Cat C/D visibility to 1 1/2 mile. VDP NA with Hermiston altimeter setting. Helicopter visibility reduction below 3/4 SM not authorized. When local altimeter setting not received, use Hermiston altimeter setting and increase all MDA 100 feet, increase S-30 visibility Cat C/D 3/8 mile and Circling Cat C/D visibility 1/4 mile.

ODALS
 MISSED APPROACH: Climbing right turn to 3200 on heading 105° and PSC R-092 to CITY/PSC 14 DME and hold.

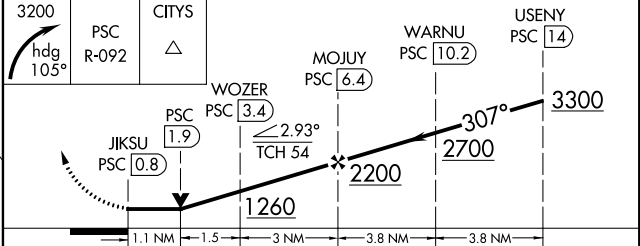
ATIS 125.65	CHINOOK APP CON* 128.75 377.2	TRI-CITIES TOWER* 135.3 (CTAF) 323.3	GND CON 121.8	CLNC DEL 120.0	UNICOM 122.95
-----------------------	---	--	-------------------------	--------------------------	-------------------------



ELEV 410	D	TDZE 405
----------	----------	----------



3200	hdg 105°	CITYS PSC R-092	WOZER PSC 3.4	MOJUJ PSC 6.4	WARNU PSC 10.2	USENY PSC 14
------	----------	-----------------	---------------	---------------	----------------	--------------



CATEGORY	A	B	C	D
S-30	820-3/4	415 (500-3/4)	820-1	415 (500-1)
C CIRCLING	880-1 470 (500-1)	940-1 530 (600-1)	1040-1 3/4 630 (700-1 3/4)	1100-2 1/4 690 (700-2 1/4)

NW-1, 06 DEC 2018 to 03 JAN 2019

NW-1, 06 DEC 2018 to 03 JAN 2019