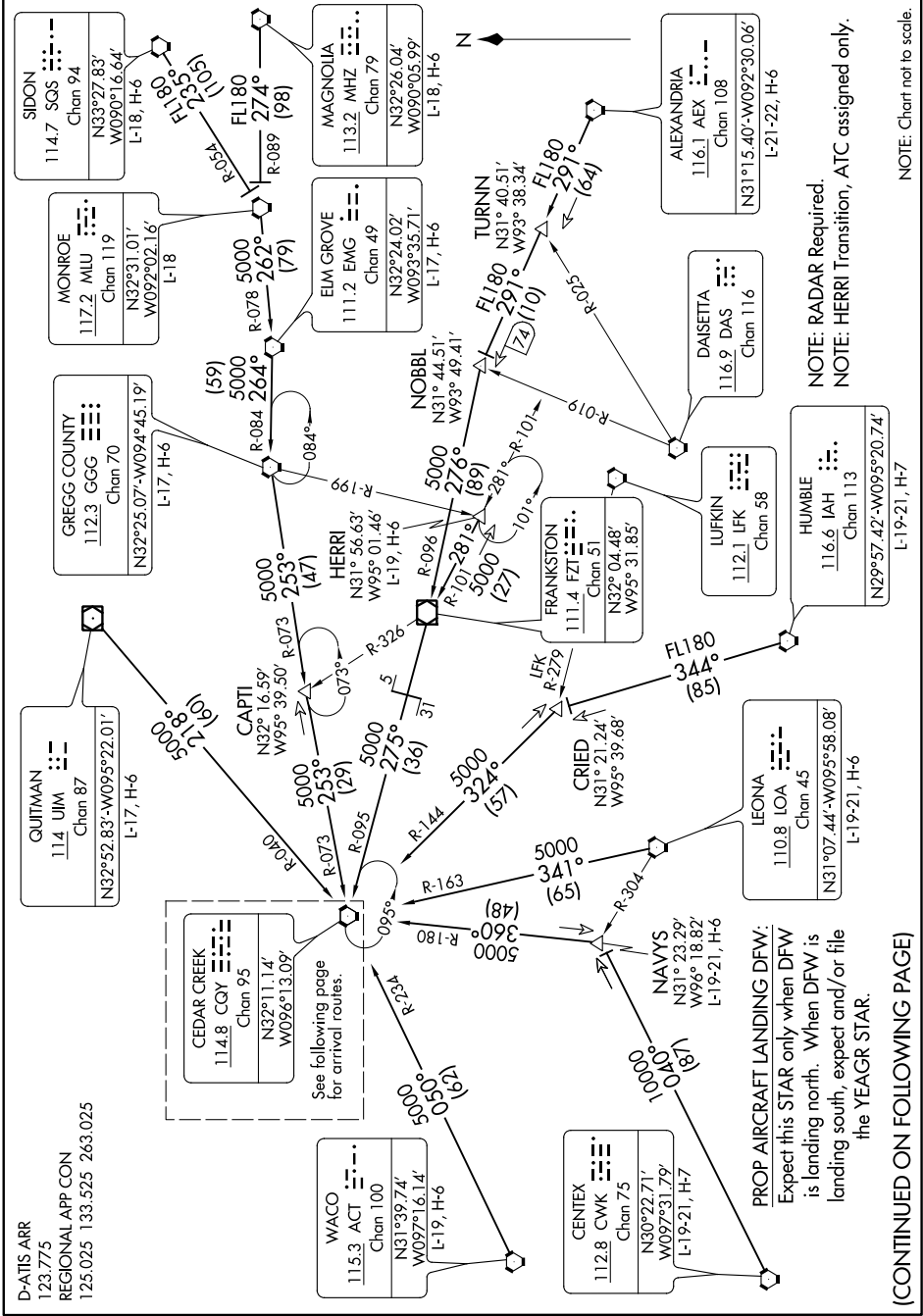


# CEDAR CREEK EIGHT ARRIVAL Transition Routes

SC-2. 06 DEC 2018 to 03 JAN 2019



NOTE: Chart not to scale.

NOTE: RADAR Required.  
NOTE: HERRI Transition, ATC assigned only.

SC-2. 06 DEC 2018 to 03 JAN 2019

# CEDAR CREEK EIGHT ARRIVAL Transition Routes

(CONTINUED ON FOLLOWING PAGE)