

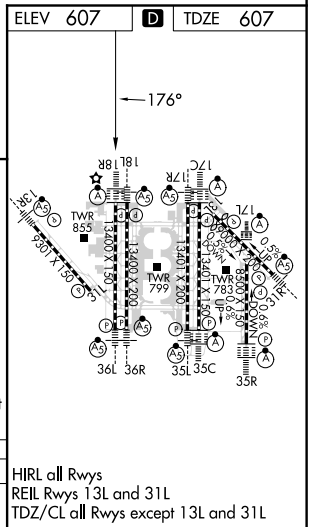
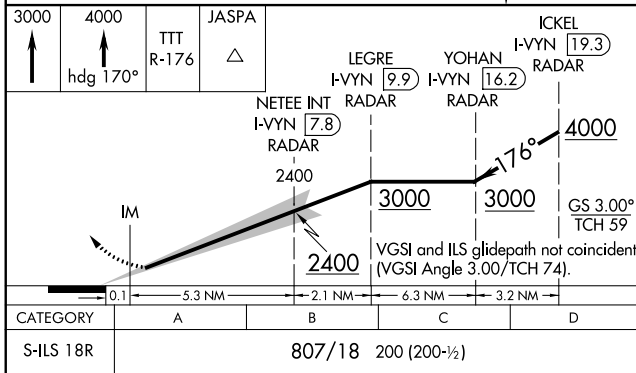
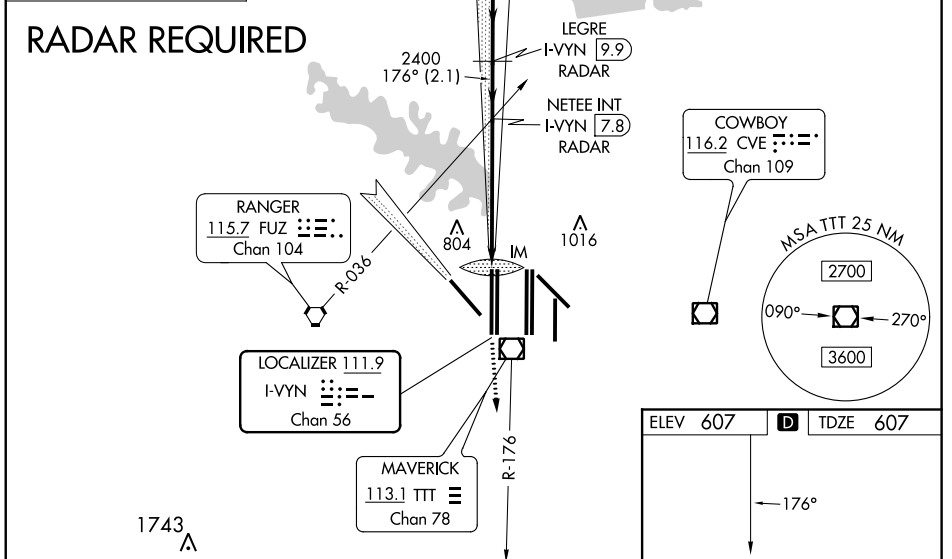
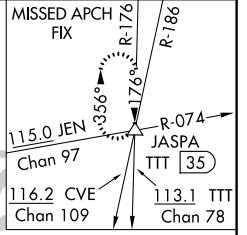
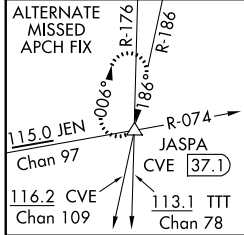
LOC/DME I-VYIN 111.9 Chan 56	APP CRS 176°	Rwy Idg 13400 TDZE 607 Apt Elev 607
---	------------------------	--

CONVERGING ILS RWY 18R

DALLAS-FORT WORTH INTL (DFW)

DME or RADAR required. Simultaneous approach authorized with CONVERGING ILS RWY 13R.	ALSIF-2	MISSED APPROACH: Climb to 3000 then climb to 4000 on heading 170° and TTT VOR/DME R-176 to JASPA INT/TTT 35 DME and hold.
--	---------	---

D-ATIS ARR 123.775 DEP 135.925	REGIONAL APP CON 118.425	DFW TOWER 126.55 127.5 EAST 124.15 134.9 WEST	GND CON 121.65 121.8 EAST 121.85 WEST	CLNC DEL 128.25	CPDLC
--	------------------------------------	---	---	---------------------------	-------



SC-2. 06 DEC 2018 to 03 JAN 2019

SC-2. 06 DEC 2018 to 03 JAN 2019

CONVERGING ILS RWY 18R