

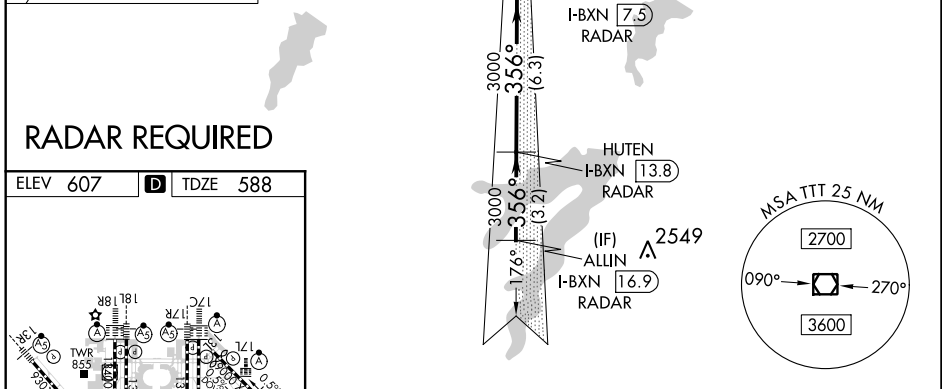
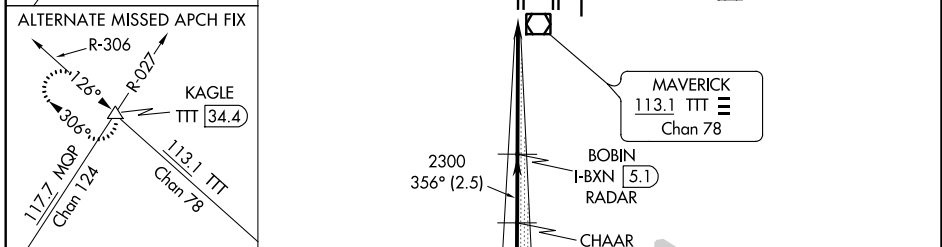
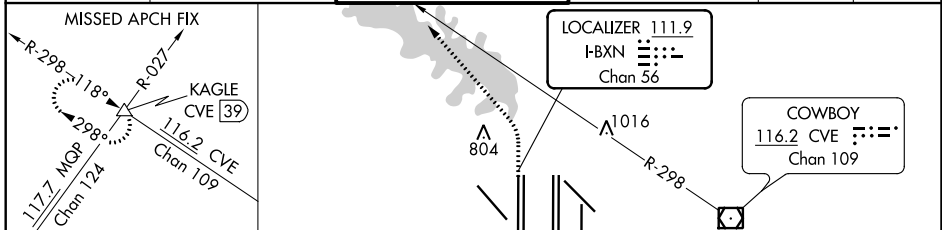
LOC/DME I-BXN 111.9 Chan 56	APP CRS 356°	Rwy Idg TDZE Apt Elev 13400 588 607
---	------------------------	---

CONVERGING ILS RWY 36L

DALLAS-FORT WORTH INTL (DFW)

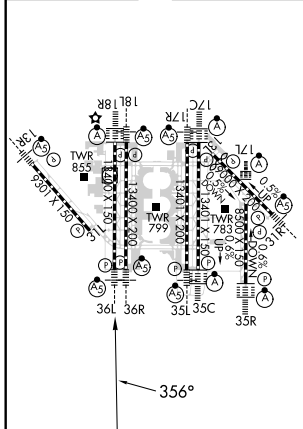
D-ATIS ARR 123.775 DEP 135.925	REGIONAL APP CON 118.425	DFW TOWER 126.55 127.5 EAST 124.15 134.9 WEST		GND CON 121.65 121.8 EAST 121.85 WEST	CLNC DEL 128.25	CPDLC
		MISSED APPROACH: Climb to 1100 then climbing left turn to 3000 on heading 315° and CVE VOR/DME R-298 to KAGLE INT/CVE VOR/DME 39 DME and hold.				

MISSED APCH FIX R-298 → 118° R-027 → KAGLE CVE [39] 116.2 CVE Chan 109 117.7 MOP Chan 124 298°	LOCALIZER 111.9 I-BXN [5.1] Chan 56	COWBOY 116.2 CVE [5.1] Chan 109
---	---	---------------------------------------



RADAR REQUIRED

ELEV 607	D	TDZE 588
----------	---	----------



HIRL all Rwys
REIL Rws 13L and 31L
TDZ/CL all Rws except 13L and 31L

1100	3000	KAGLE	ALLIN
↑	hdg 315°	CVE R-298	I-BXN [16.9] RADAR
VGSI and ILS glidepath not coincident (VGSI Angle 3.00/TCH 72).		BOBIN I-BXN [5.1] RADAR	HUTEN I-BXN [13.8] RADAR
		CHAAR I-BXN [7.5] RADAR	I-BXN [1.6.9] RADAR
		2300 3000 3000 4000 356°	
		GS 3.00° TCH 55	
		5.2 NM 2.5 NM 6.3 NM 3.2 NM	
CATEGORY	A	B	C
S-ILS 36L	788/18 200 (200-1/2)		

SC-2. 06 DEC 2018 to 03 JAN 2019

SC-2. 06 DEC 2018 to 03 JAN 2019