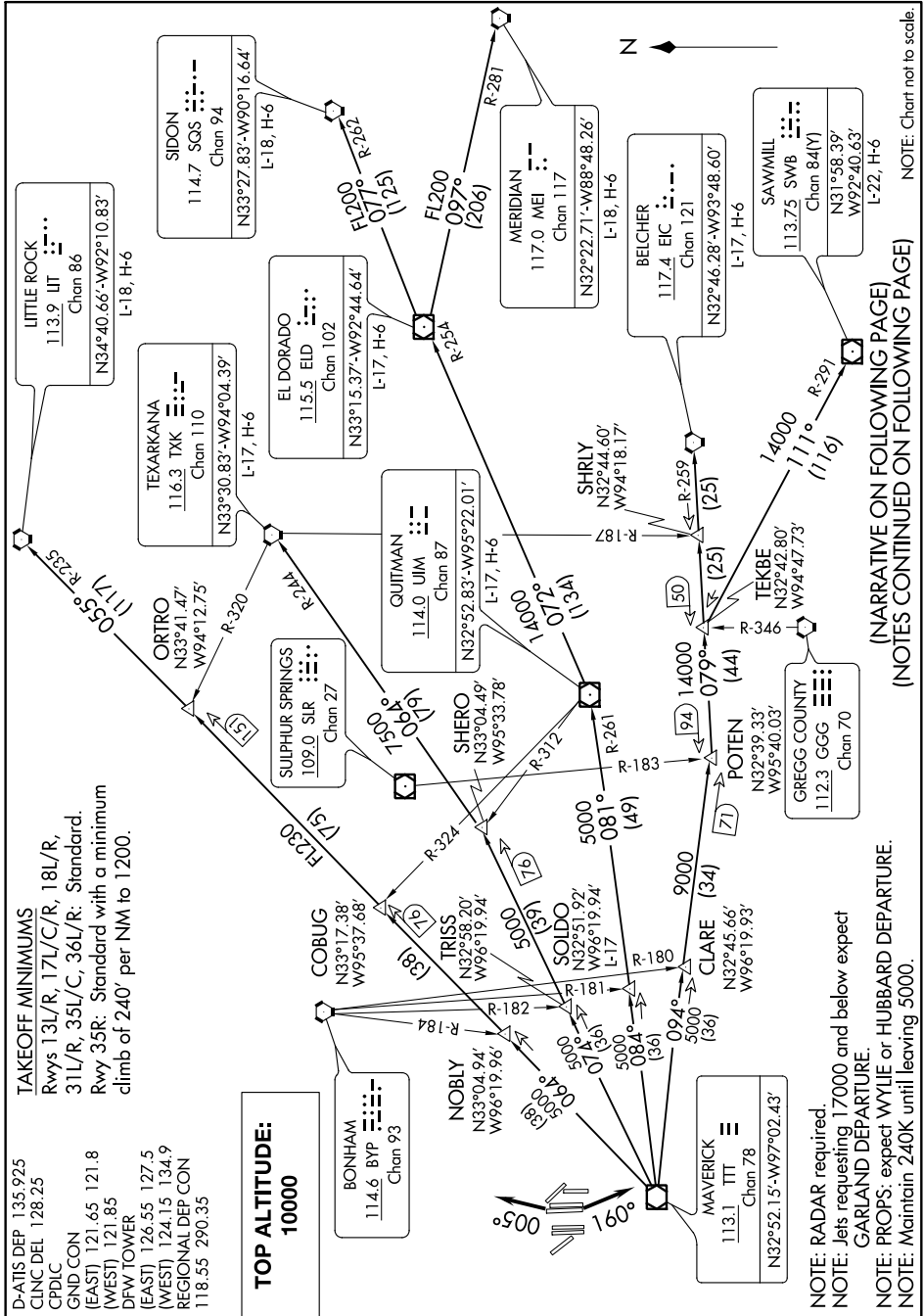


DALLAS FOUR DEPARTURE

DALLAS-FORT WORTH, TEXAS

SC-2. 06 DEC 2018 to 03 JAN 2019



TAKEOFF MINIMUMS
 Rwys 13L/R, 17L/C/R, 18L/R,
 31L/R, 35L/C, 36L/R: Standard.
 Rwy 35R: Standard with a minimum
 climb of 240' per NM to 1200.

D-ATIS DEP 135.925
 CLNC DEL 128.25
 CPDC
 GND CON
 (EAST) 121.65 121.8
 (WEST) 121.85
 DFW TOWER
 (EAST) 126.55 127.5
 (WEST) 124.15 134.9
 REGIONAL DEP CON
 118.55 290.35

TOP ALTITUDE:
10000

BONHAM
 114.6 BYP
 Chan 93

NOBLY
 N33°04.94'
 W96°19.96'
 5000
 07°36'

SOLDO
 N32°38.20'
 W96°19.94'
 5000
 07°36'

MAVERICK
 113.1 TTT
 Chan 78
 N32°52.15'-W97°02.43'

CLARE
 N32°45.66'
 W96°19.93'
 5000
 09°46'

NOTE: RADAR required.
NOTE: Jets requesting 17000 and below expect GARLAND DEPARTURE.
NOTE: PROPS: expect WYLLIE or HUBBARD DEPARTURE.
NOTE: Maintain 240K until leaving 5000.

DALLAS FOUR DEPARTURE

DALLAS-FORT WORTH, TEXAS

NOTE: Chart not to scale.

(NARRATIVE ON FOLLOWING PAGE)
(NOTES CONTINUED ON FOLLOWING PAGE)

(NARRATIVE ON FOLLOWING PAGE)
(NOTES CONTINUED ON FOLLOWING PAGE)

SC-2. 06 DEC 2018 to 03 JAN 2019