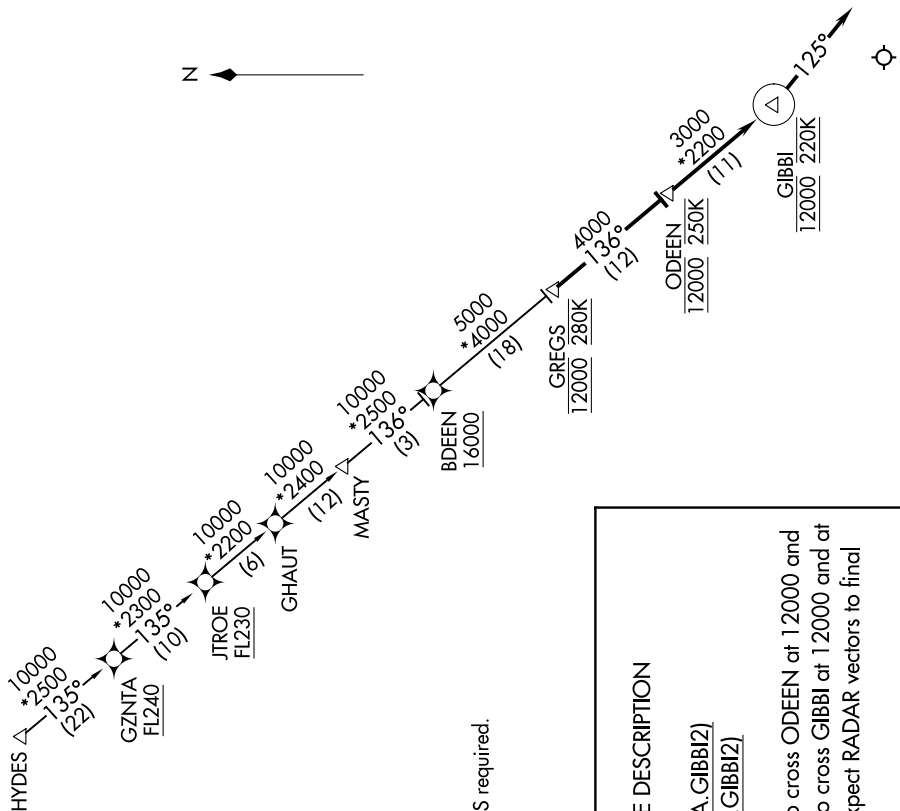


GIBBI TWO ARRIVAL (RNAV)

D-ATIS ARR
123.775
REGIONAL APP CON
119.875 284.65



NOTE: Chart not to scale

SC-2: 06 DEC 2018 to 03 JAN 2019

- NOTE: RADAR required.
- NOTE: RNAV 1.
- NOTE: DME/DME/IRU or GPS required.
- NOTE: Turboplet aircraft only.
- NOTE: ATC assigned only.

ARRIVAL ROUTE DESCRIPTION

GZNTA TRANSITION (GZNTA.GIBBI2)
HYDES TRANSITION (HYDES.GIBBI2)

From GREGS on track 136° to cross ODEEN at 12000 and at 250K, then on track 136° to cross GIBBI at 12000 and at 220K, then on track 125°. Expect RADAR vectors to final approach course.

SC-2: 06 DEC 2018 to 03 JAN 2019

GIBBI TWO ARRIVAL (RNAV)