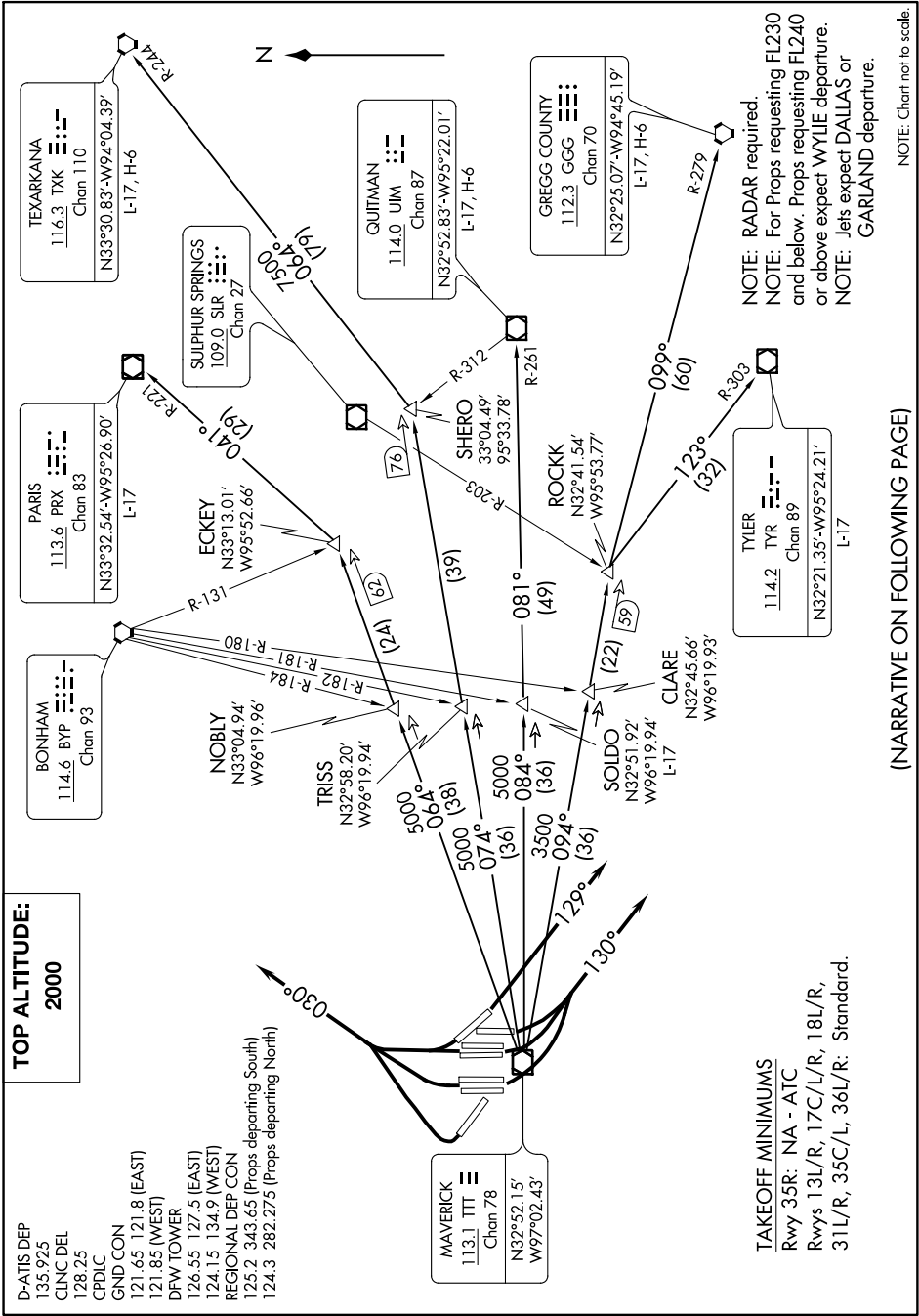


HUBBARD NINE DEPARTURE

SC-2, 06 DEC 2018 to 03 JAN 2019



TOP ALTITUDE:
2000

D-ATIS DEP
135.925
CLNC DEL
128.25
CPDLC
GND CON
121.65 121.8 (EAST)
121.85 (WEST)
DFW TOWER
126.55 127.5 (EAST)
124.15 134.9 (WEST)
REGIONAL DEP CON
125.2 343.65 (Props departing South)
124.3 282.275 (Props departing North)

MAVERICK
113.1 TTT
Chen 78
N32°52.15'
W97°02.43'

TAKEOFF MINIMUMS
Rwy 35R: NA - ATC
Rwys 13L/R, 17C/L/R, 18L/R,
31L/R, 35C/L, 36L/R: Standard.

NOTE: RADAR required.
NOTE: For Props requesting FL230 and below. Props requesting FL240 or above expect WYLE departure.
NOTE: Jets expect DALLAS or GARLAND departure.

(NARRATIVE ON FOLLOWING PAGE)

NOTE: Chart not to scale.

SC-2, 06 DEC 2018 to 03 JAN 2019

HUBBARD NINE DEPARTURE