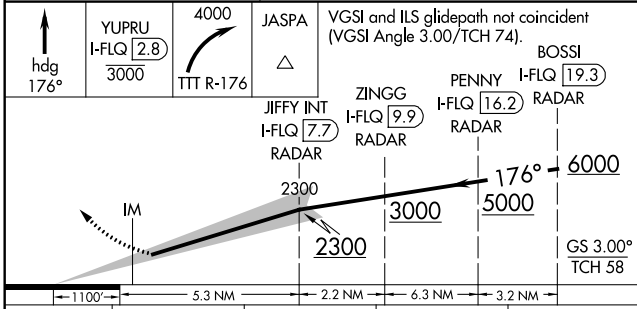
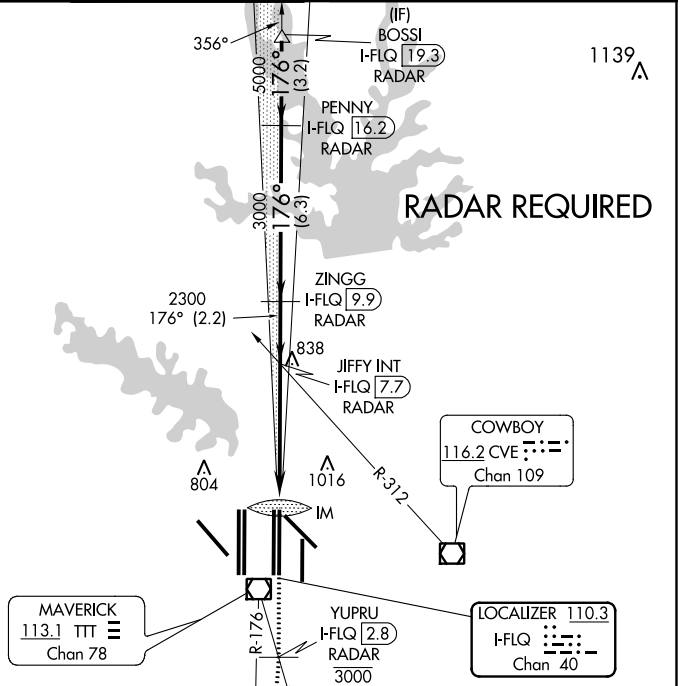
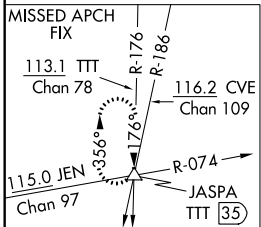
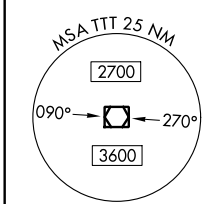
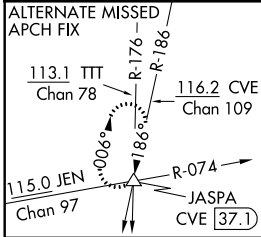


LOC/DME I-FLQ <b>110.3</b> Chan <b>40</b>	APP CRS <b>176°</b>	Rwy ldg TDZE Apt Elev	<b>13401</b> <b>562</b> <b>607</b>
---	------------------------	-----------------------------	--

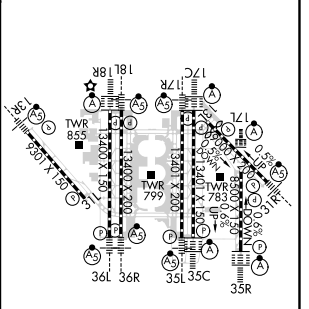
# ILS RWY 17C (SA CAT I)

## DALLAS-FORT WORTH INTL (DFW)

<b>▼</b> DME or RADAR required. Simultaneous approach authorized with Rwy 17L, 18L/R. Requires specific OPSPEC, MSPEC, or LOA approval and use of HUD to DA.		ALSF-2 	<b>MISSED APPROACH:</b> Climb on heading 176° to cross YUPRU/2.8 DME/RADAR at or below 3000, then climbing right turn to 4000 on TTT VOR/DME R-176 to JASPA INT/TTT 35 DME and hold.		
D-ATIS ARR <b>123.775</b> DEP <b>139.925</b>	REGIONAL APP CON <b>118.1 133.15</b>	DFW TOWER <b>126.55 127.5</b> EAST <b>124.15 134.9</b> WEST	GND CON <b>121.65 121.8</b> EAST <b>121.85</b> WEST	CLNC DEL <b>128.25</b>	CPDLC



ELEV 607	<b>D</b> TDZE 562
----------	-------------------



CATEGORY	A	B	C	D
S-ILS 17C	RA 144/14 150 DA 712			

### SA CATEGORY I ILS - SPECIAL AIRCREW & AIRCRAFT CERTIFICATION REQUIRED

HIRL all Rwws  
REIL Rwws 13L and 31L  
TDZ/CL all Rwws except 13L and 31L

SC-2. 06 DEC 2018 to 03 JAN 2019

SC-2. 06 DEC 2018 to 03 JAN 2019