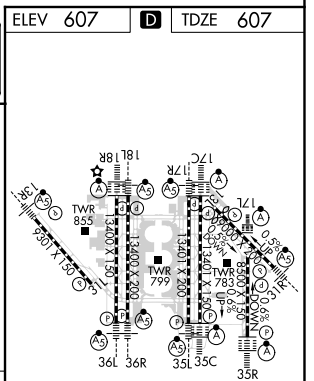
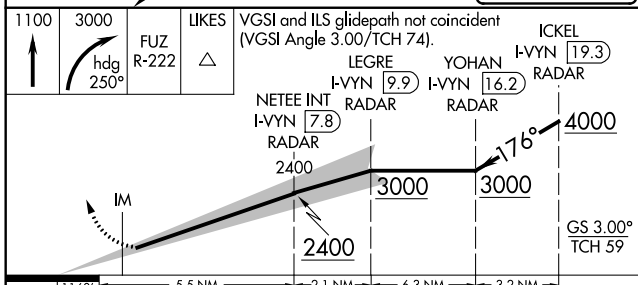
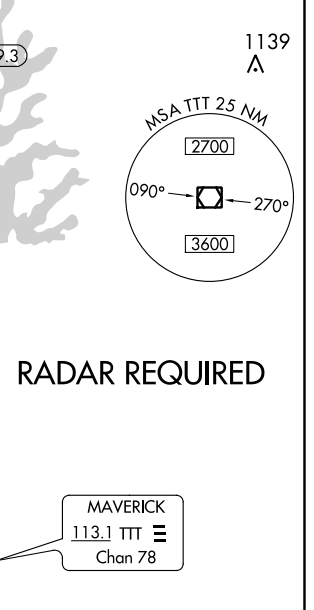
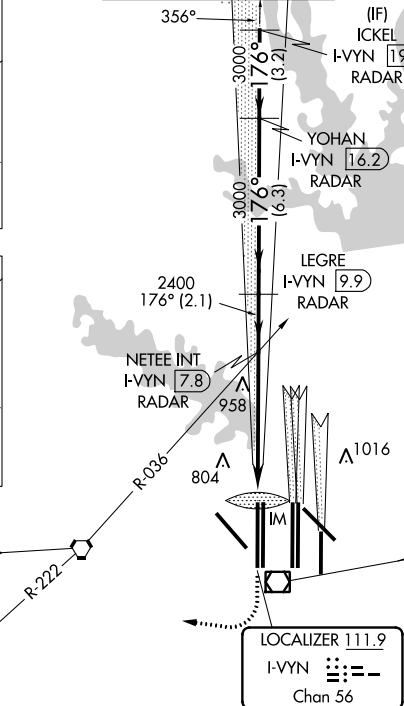
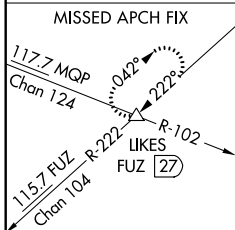
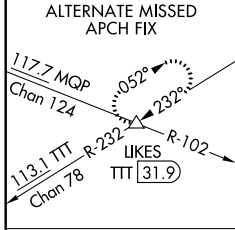


LOC/DME I-VYIN 111.9 Chan 56	APP CRS 176°	Rwy Idg TDZE Apt Elev	13400 607 607
--	------------------------	-----------------------------	--

ILS RWY 18R (SA CAT I)
DALLAS-FORT WORTH INTL (DFW)

▽ △	DME or RADAR required. Simultaneous approach authorized with Rwy 17 L/C/R. Requires specific OPSPEC, MSPEC, or LOA approval and use of HUD to DH.	Rwy 18R ALS-F2 A	MISSE APPROACH: Climb to 1100 then climbing right turn to 3000 on heading 250° and FUZ VORTAC R-222 to LIKES INT/FUZ VORTAC 27 DME and hold.		
D-ATIS ARR DEP	REGIONAL APP CON	DFW TOWER	GND CON	CLNC DEL	CPDLC
123.775 135.925	118.425	126.55 127.5 EAST 124.15 134.9 WEST	121.65 121.8 EAST 121.85 WEST	128.25	



1100	3000	LIKES	VGSI and ILS glidepath not coincident (VGSI Angle 3.00/TCH 74).	ICKEL I-VYIN 19.3
hdg 250°	FUZ R-222	△	LEGRE I-VYIN 9.9	YOHAN I-VYIN 16.2
			NETEE INT I-VYIN 7.8	
CATEGORY	A	B	C	D
S-ILS 18R	RA 158/14		150 DA 757	

SA CATEGORY I ILS - SPECIAL AIRCREW & AIRCRAFT CERTIFICATION REQUIRED

HIRL all Rwys
REIL Rwy 13L and 31L
TDZ/CL all Rwy except 13L and 31L

SC-2, 06 DEC 2018 to 03 JAN 2019

SC-2, 06 DEC 2018 to 03 JAN 2019