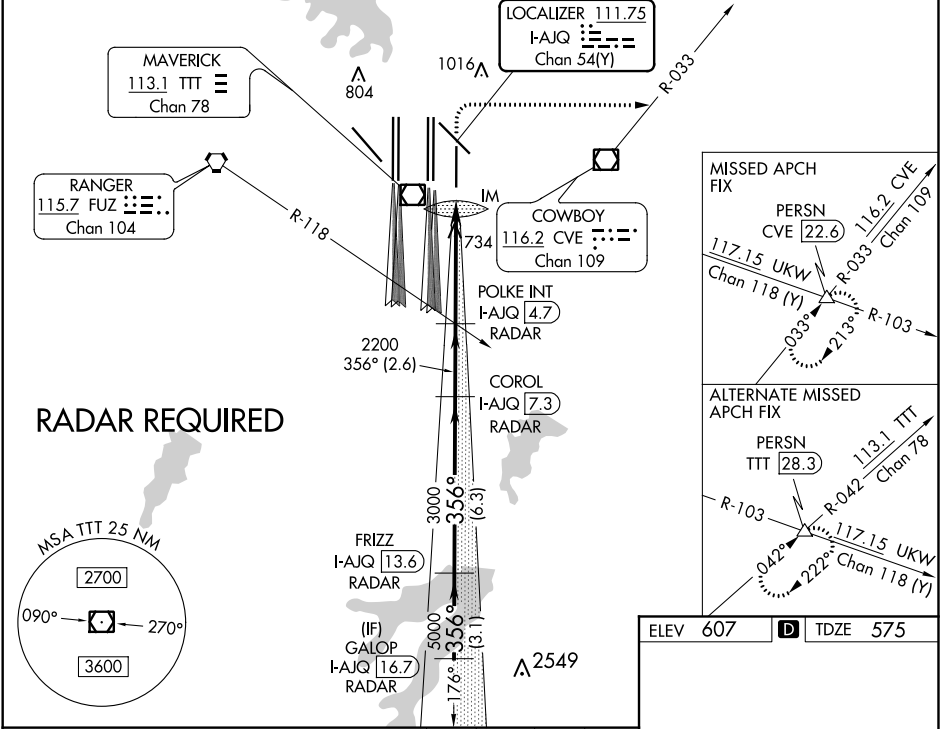


LOC/DME I-AJQ 111.75 Chan 54(Y)	APP CRS 356°	Rwy Idg TDZE Apt Elev 8500 575 607
--	------------------------	--

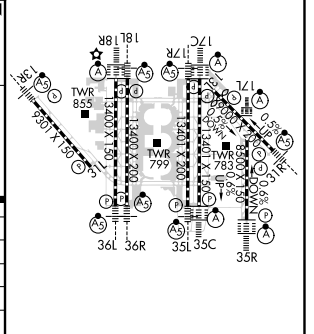
ILS RWY 35R (CAT II & III)

DALLAS-FORT WORTH INTL (DFW)

D-ATIS ARR 123.775 DEP 135.925	REGIONAL APP CON 119.4	DFW TOWER 126.55 127.5 EAST 124.15 134.9 WEST		GND CON 121.65 121.8 EAST 121.85 WEST		CLNC DEL 128.25	CPDLC
		Simultaneous approach authorized with Rwy 36L/R and Rwy 35L/C. DME required.				MISSED APPROACH: Climb to 1040 then climbing right turn to 3000 on heading 090° and CVE VOR/DME R-033 to PERSN/CVE 22.6 DME and hold.	



GALOP I-AJQ 16.7 RADAR	FRIZZ I-AJQ 13.6 RADAR	COROL I-AJQ 7.3 RADAR	POLKE INT I-AJQ 4.7 RADAR	1040 3000	CVE R-033	PERSN
5000	5000	3000	2200	hdg 090°		
GS 3.00° TCH 58	5000	3000	2200	I-AJQ DME ANTENNA IM 671		
VGSI and ILS glidepath not coincident (VGSI Angle 3.00/TCH 73).						
3.1 NM			6.3 NM		2.6 NM	
A		B		C		D
S-ILS 35R	CAT II RA 94/12		100 DA 675			
S-ILS 35R	CAT IIIa		RVR 07			
S-ILS 35R	CAT IIIb		RVR 06			
S-ILS 35R	CAT IIIc		NA			



CATEGORY II & III ILS - SPECIAL AIRCREW & AIRCRAFT CERTIFICATION REQUIRED

SC-2, 06 DEC 2018 to 03 JAN 2019

SC-2, 06 DEC 2018 to 03 JAN 2019