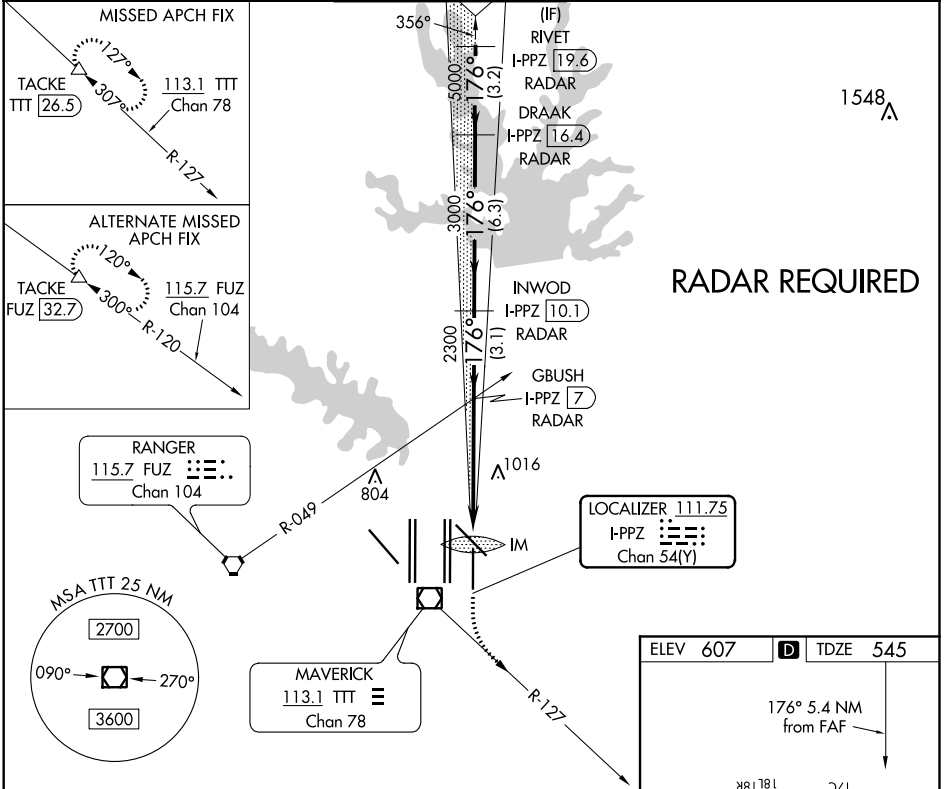


LOC/DME I-PPZ 111.75 Chan 54 (Y)	APP CRS 176°	Rwy Idg TDZE Apt Elev	8500 545 607
--	------------------------	-----------------------------	---

ILS or LOC RWY 17L

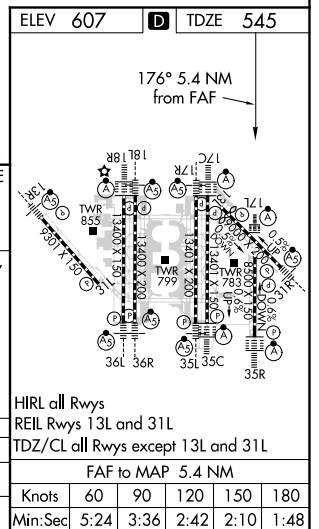
DALLAS-FORT WORTH INTL (DFW)

▽ Simultaneous approach authorized with Rwy 17C/R and Rwy 18L/R. DME required. ALSF-2 	MISSED APPROACH: Climb to 1020 then climbing left turn to 3000 on heading 151° and TTT VOR/DME R-127 to TACKE/TTT 26.5 DME and hold.				
D-ATIS ARR 123.775 DEP 135.925	REGIONAL APP CON 119.4	DFW TOWER 126.55 127.5 EAST 124.15 134.9 WEST	GND CON 121.65 121.8 EAST 121.85 WEST	CLNC DEL 128.25	CPDLC



VGSI and ILS glidepath not coincident (VGSI Angle 3.00/TCH 77).

RIVET I-PPZ [19.6] RADAR	DRAAK I-PPZ [16.4] RADAR	INWOD I-PPZ [10.1] RADAR	GBUSH I-PPZ [7] RADAR	IM	TACKE TTT R-127 △
5000	5000	3000	2300		
GS 3.00° TCH 56					
	3.2 NM	6.3 NM	3.1 NM	4 NM	1.2 NM
CATEGORY	A	B	C	D	
S-ILS 17L	745/18 200 (200-½)				
S-LOC 17L	1040/24	495 (500-½)	1040/50	495 (500-1)	



SC-2. 06 DEC 2018 to 03 JAN 2019

SC-2. 06 DEC 2018 to 03 JAN 2019