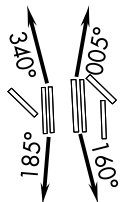


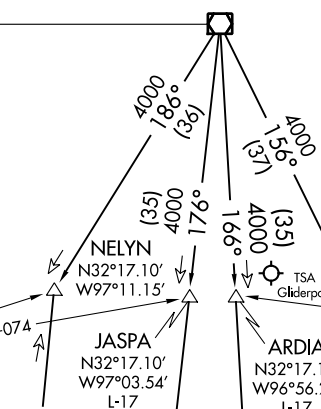
JOE POOL NINE DEPARTURE

**TOP ALTITUDE:
10000**

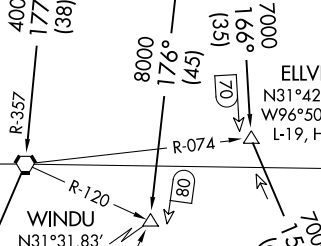
D-ATIS DEP 135.925
 CLNC DEL 128.25
 CPDLC
 GND CON
 (EAST) 121.65 121.8
 (WEST) 121.85
 DFW TOWER
 (EAST) 126.55 127.5
 (WEST) 124.15 134.9
 REGIONAL DEP CON
 125.125 353.95
 (Rwy 17R/C)
 125.125 353.95
 (Rwy 18L/R)
 126.475 363.15
 (Rwy 36R/L)
 118.55 290.35
 (Rwy 35L/C)



MAVERICK
 113.1 TTT
 Chan 78
 N32°52.15'
 W97°02.43'



GLEN ROSE
 115.0 JEN
 Chan 97



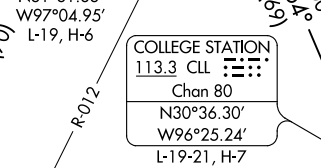
WACO
 115.3 ACT
 Chan 100
 N31°39.74'
 W97°16.14'
 L-19, H-6

CEDAR CREEK
 114.8 CQY
 Chan 95

TORNN
 N31°31.22'
 W96°30.88'
 H-6

LEONA
 110.8 LOA
 Chan 45

HOARY
 N30°34.63'
 W97°46.52'
 L-19-21, H-7



COLLEGE STATION
 113.3 CLL
 Chan 80
 N30°36.30'
 W96°25.24'
 L-19-21, H-7

BILEE
 N31°09.87'
 W96°22.89'
 L-19-21, H-6

NOTE: RADAR required.
 NOTE: DME required for BRDEN, TORNN, and BILEE transitions.

TAKEOFF MINIMUMS
 Rwy 13L/R, 17L/C/R, 18L/R, 31L/R,
 35L/C, 36L/R: Standard.
 Rwy 35R: Standard with a minimum climb
 of 240' per NM to 1200.

NAVASOTA
 115.9 TNV
 Chan 106

CENTEX
 112.8 CWK
 Chan 75

SAN ANTONIO
 116.8 SAT
 Chan 115
 N29°38.64'-W98°27.68'
 L-19, H-7

(NARRATIVE ON FOLLOWING PAGE)
 (NOTES CONTINUED ON FOLLOWING PAGE) NOTE: Chart not to scale.

SC-2, 06 DEC 2018 to 03 JAN 2019

SC-2, 06 DEC 2018 to 03 JAN 2019

JOE POOL NINE DEPARTURE