

# KUSSO FIVE DEPARTURE (RNAV)

DALLAS-FORT WORTH, TEXAS

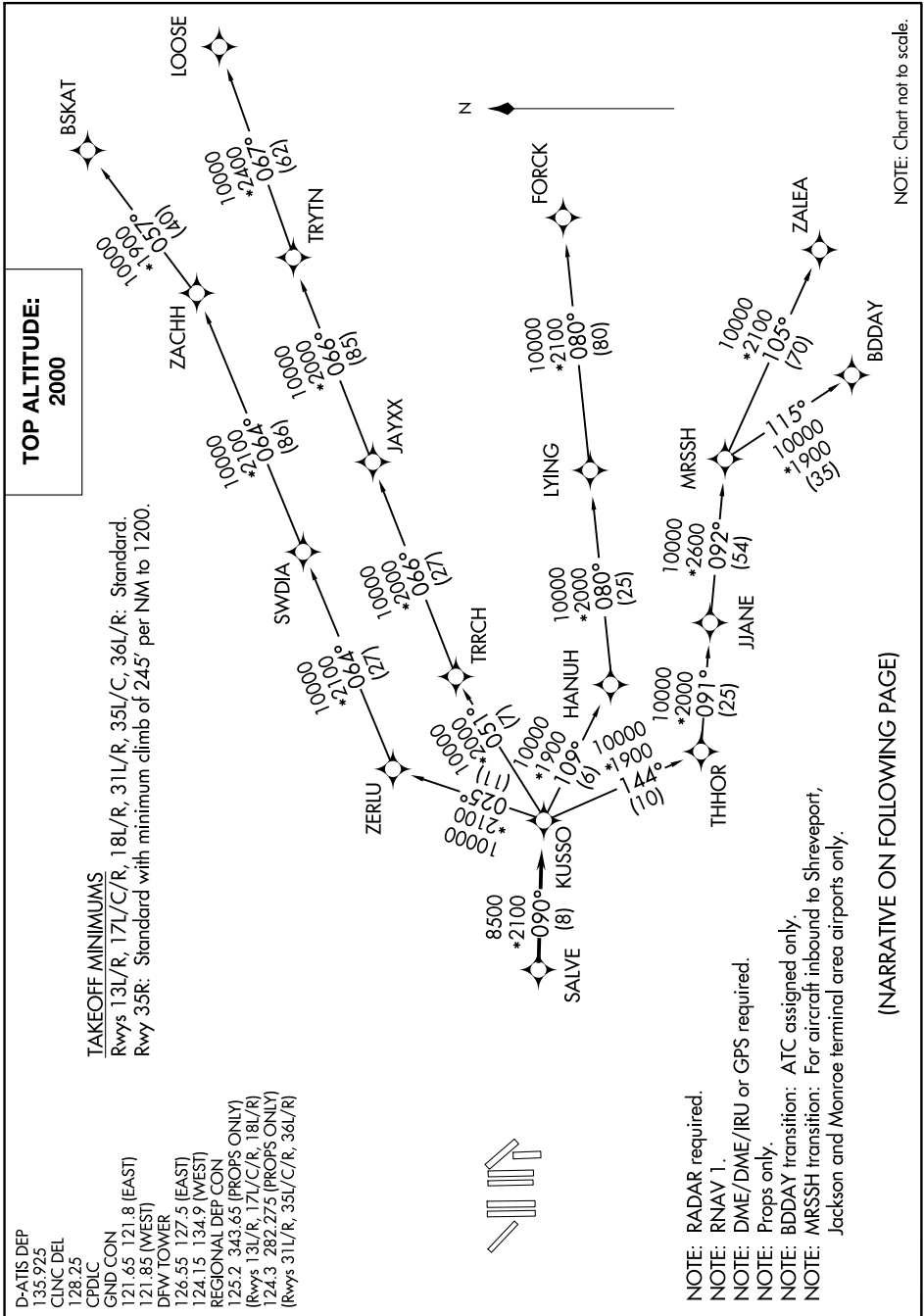
SC-2: 06 DEC 2018 to 03 JAN 2019

D-ATIS DEP  
135.925  
CLNC DEL  
128.25  
CPDLC  
GND CON  
121.65 121.8 (EAST)  
121.85 (WEST)  
DFW TOWER  
126.55 127.5 (EAST)  
124.15 134.9 (WEST)  
REGIONAL DEP CON  
125.2 343.65 (PROPS ONLY)  
(Rwys 13L/R, 17L/C/R, 18L/R)  
124.3 282.275 (PROPS ONLY)  
(Rwys 31L/R, 35L/C/R, 36L/R)

### TAKEOFF MINIMUMS

Rwys 13L/R, 17L/C/R, 18L/R, 31L/R, 35L/C, 36L/R: Standard.  
Rwy 35R: Standard with minimum climb of 245' per NM to 1200.

**TOP ALTITUDE:  
2000**



NOTE: Chart not to scale.

- NOTE: RADAR required.
- NOTE: RNAV 1.
- NOTE: DME/DME/IRU or GPS required.
- NOTE: Props only.
- NOTE: BDDAY transition: ATC assigned only.
- NOTE: MRSSH transition: For aircraft inbound to Shreveport, Jackson and Monroe terminal area airports only.

(NARRATIVE ON FOLLOWING PAGE)

SC-2: 06 DEC 2018 to 03 JAN 2019

# KUSSO FIVE DEPARTURE (RNAV)

(KUSSO5.KUSSO) 01FEB18

DALLAS-FORT WORTH, TEXAS

DALLAS-FORT WORTH INTL (DFW)