

LOWGN EIGHT DEPARTURE (RNAV)

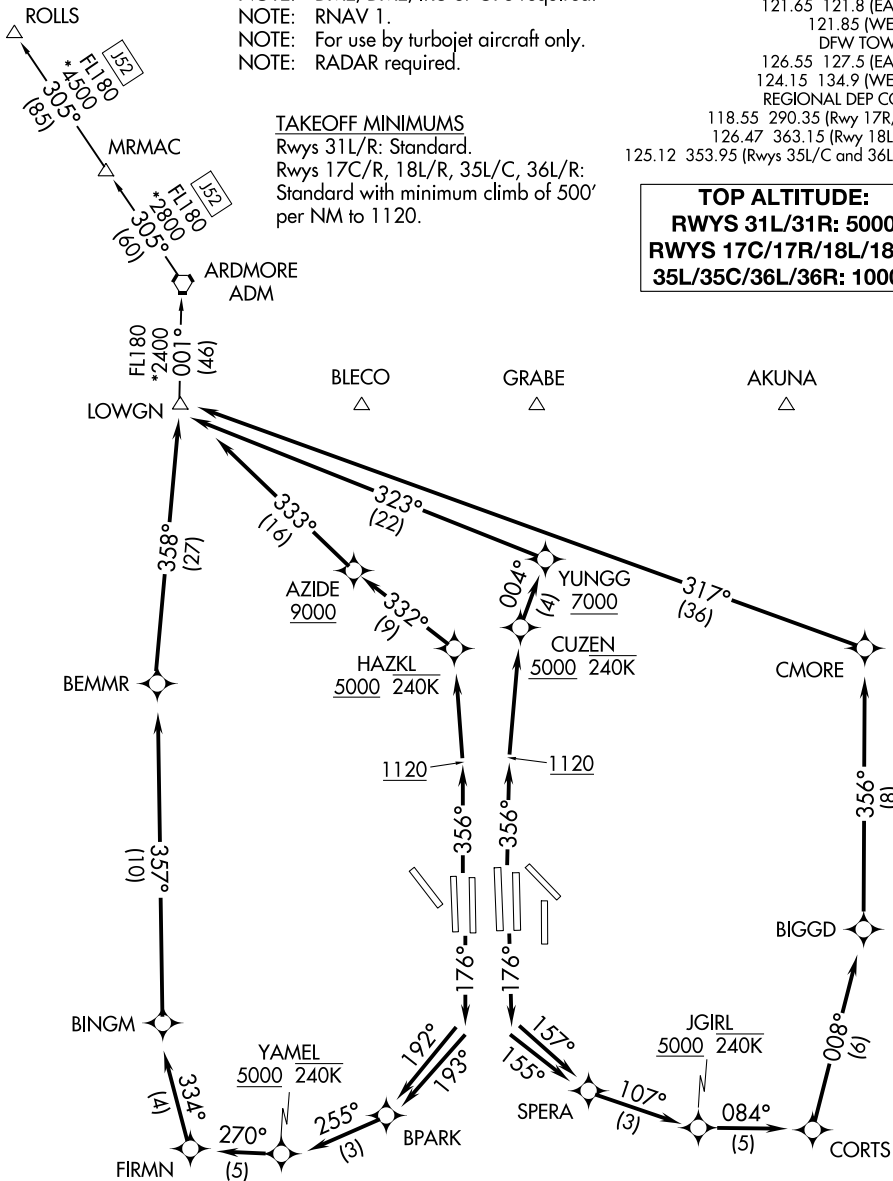
NOTE: ROLLS TRANSITION: For all aircraft proceeding northwest bound on J52.
 NOTE: DME/DME/IRU or GPS required.
 NOTE: RNAV 1.
 NOTE: For use by turbojet aircraft only.
 NOTE: RADAR required.

D-ATIS DEP 135.925
 CLNC DEL 128.25
 CPDLC
 GND CON
 121.65 121.8 (EAST)
 121.85 (WEST)
 DFW TOWER
 126.55 127.5 (EAST)
 124.15 134.9 (WEST)
 REGIONAL DEP CON
 118.55 290.35 (Rwy 17R/C)
 126.47 363.15 (Rwy 18L/R)
 125.12 353.95 (Rwys 35L/C and 36L/R)

TAKEOFF MINIMUMS

Rwys 31L/R: Standard.
 Rwys 17C/R, 18L/R, 35L/C, 36L/R:
 Standard with minimum climb of 500' per NM to 1120.

TOP ALTITUDE:
RWYS 31L/31R: 5000
**RWYS 17C/17R/18L/18R/
 35L/35C/36L/36R: 10000**



NOTE: Chart not to scale.

(NARRATIVE ON FOLLOWING PAGE)

LOWGN EIGHT DEPARTURE (RNAV)