

(NELYN5.NELYN) 18032

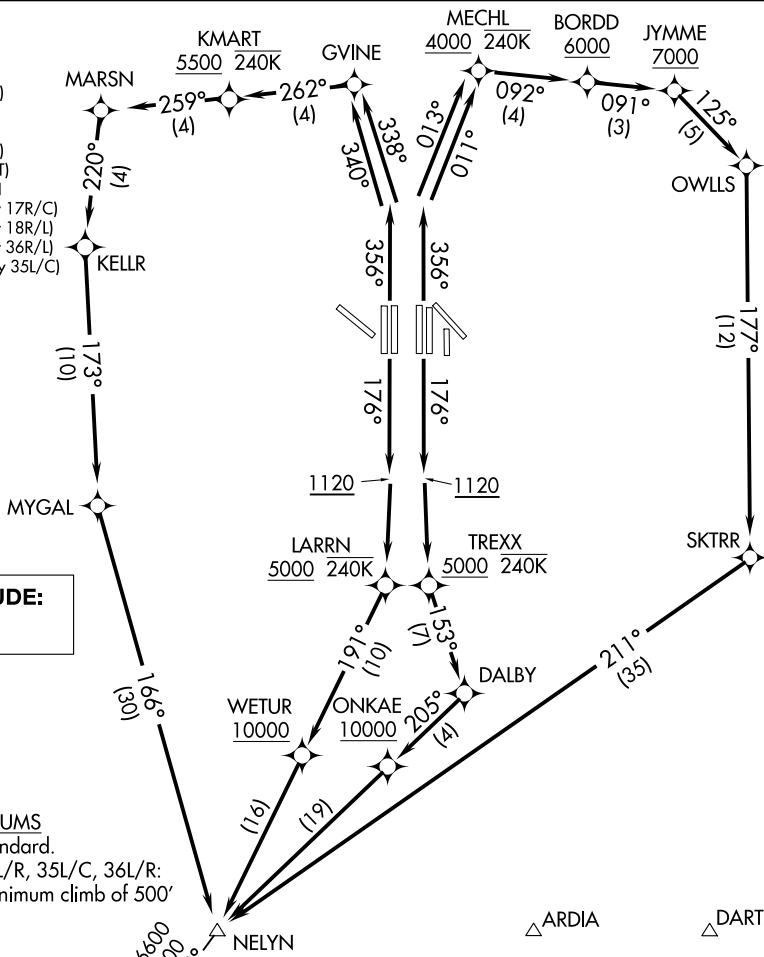
AL-6039 (FAA)

DALLAS-FORT WORTH INTL (DFW)

NELYN FIVE DEPARTURE (RNAV)

DALLAS-FORT WORTH, TEXAS

D-ATIS DEP 135.925
 CLNC DEL 128.25
 CPDLC
 GND CON
 121.65 121.8 (EAST)
 121.85 (WEST)
 DFW TOWER
 126.55 127.5 (EAST)
 124.15 134.9 (WEST)
 REGIONAL DEP CON
 125.12 353.95 (Rwy 17R/C)
 125.12 353.95 (Rwy 18R/L)
 126.47 363.15 (Rwy 36R/L)
 118.55 290.35 (Rwy 35L/C)



**TOP ALTITUDE:
10000**

TAKEOFF MINIMUMS

Rwys 31L/R: Standard.
 Rwys 17C/R, 18L/R, 35L/C, 36L/R:
 Standard with minimum climb of 500'
 per NM to 1120.

- NOTE: DME/DME/IRU or GPS required.
- NOTE: RNAV 1.
- NOTE: For use by turbojets only.
- NOTE: Turbojet aircraft landing San Antonio and Austin terminals areas expect the JASPA DEPARTURE.
- NOTE: Props file and expect KEENE or TRI-GATE DEPARTURE.
- NOTE: RADAR required.
- NOTE: SAN ANTONIO TRANSITION: For aircraft overflying CENTEX and SAN ANTONIO.
- NOTE: WACO TRANSITION: For aircraft inbound to Waco or Gray terminal airports.

(NARRATIVE ON FOLLOWING PAGE)

NOTE: Chart not to scale.

NELYN FIVE DEPARTURE (RNAV)

(NELYN5.NELYN) 30APR15

DALLAS-FORT WORTH, TEXAS

DALLAS-FORT WORTH INTL (DFW)

SC-2, 06 DEC 2018 to 03 JAN 2019

SC-2, 06 DEC 2018 to 03 JAN 2019