


WAAS CH 86807 W18A	APP CRS 176°	Rwy Idg 13400 TDZE 602 Apt Elev 607
--	------------------------	--

RNAV (GPS) RWY 18L

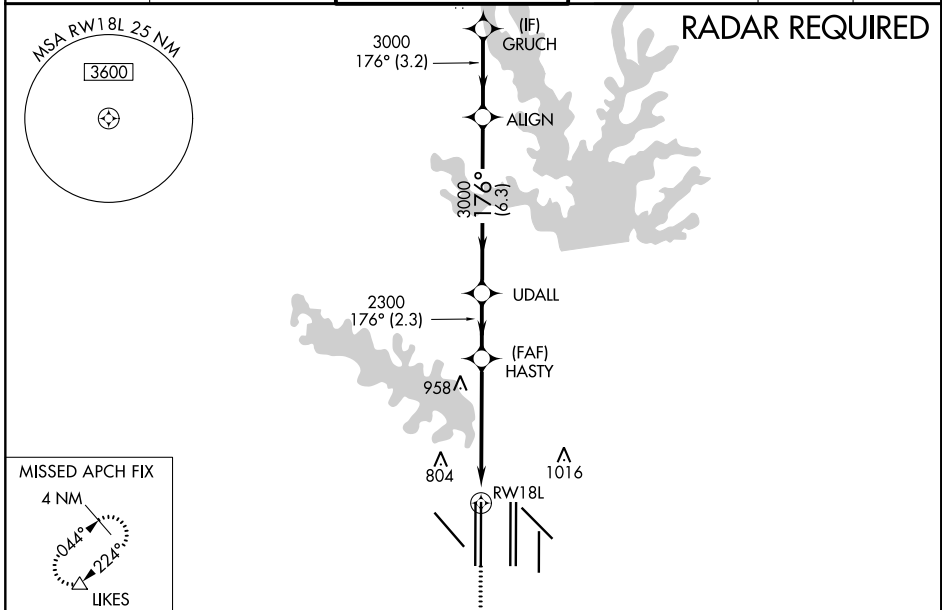
DALLAS-FORT WORTH INTL (DFW)

▼ For uncompensated Baro-VNAV systems, LNAV/VNAV NA Below -4°C (25°F) or above 54°C (130°F). For inop MALS/R, increase LNAV Cats C and D visibility to 1¾. Simultaneous approach authorized with Rwy 17L/C/R. DME/DME RNP-0.3 NA. LNAV procedure NA during simultaneous operations. Use of FD or AP providing RNAV track guidance required during simultaneous operations.

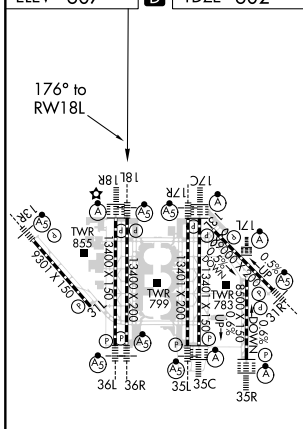
MALS/R 

MISSED APPROACH: Climb to 1100, then climbing right turn to 3000 direct LIKES and hold.

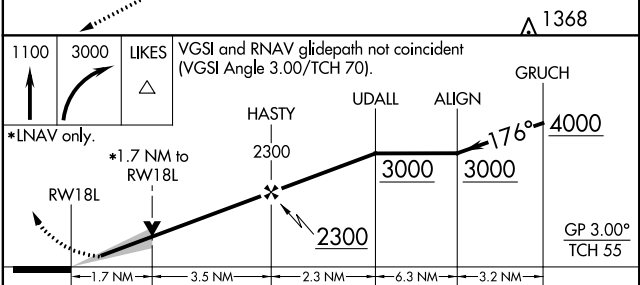
D-ATIS ARR 123.775 DEP 135.925	REGIONAL APP CON 119.4	DFW TOWER 126.55 127.5 EAST 124.15 134.9 WEST	GND CON 121.65 121.8 EAST 121.85 WEST	CLNC DEL 128.25	CPDLC
--	----------------------------------	---	---	---------------------------	-------



ELEV 607	D	TDZE 602
-----------------	----------	-----------------



HIRL all Rwys
REIL Rws 13L and 31L
TDZ/CL all Rws except 13L and 31L



CATEGORY	A	B	C	D
LPV DA		802/18	200 (200-½)	
LNAV/VNAV DA		980/40	378 (400-¾)	
LNAV MDA	1220/24	618 (700-½)	1220-1¾	618 (700-1¾)

SC-2: 06 DEC 2018 to 03 JAN 2019

SC-2: 06 DEC 2018 to 03 JAN 2019