


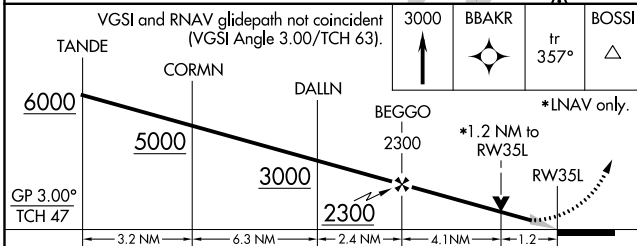
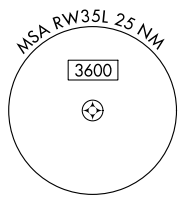
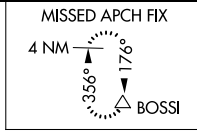
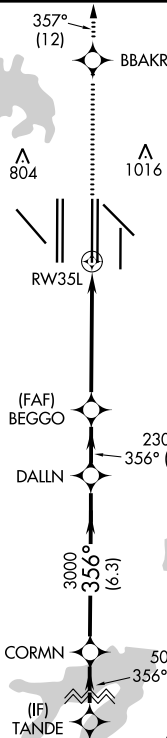
WAAS CH 45805 W35B	APP CRS 356°	Rwy Idg 13401 TDZE 564 Apt Elev 607
--	------------------------	--

RNAV (GPS) RWY 35L

DALLAS-FORT WORTH INTL (DFW)

<p>▼ For uncompensated Baro-VNAV systems, LNAV/VNAV NA below -4°C (25°F) or above 54°C (130°F). Simultaneous approach authorized with Rwy 36L/R and Rwy 35R. DME/DME RNP-0.3 NA. LNAV procedure NA during simultaneous operations. Use of FD or AP providing RNAV track guidance required during simultaneous operations.</p>		<p>MALSR </p>	<p>MISSED APPROACH: Climb to 3000 direct BBAKR and on track 357° to BOSSI and hold.</p>		
D-ATIS ARR 123.775 DEP 135.925	REGIONAL APP CON 127.075	DFW TOWER 126.55 127.5 EAST 124.15 134.9 WEST	GND CON 121.65 121.8 EAST 121.85 WEST	CLNC DEL 128.25	CPDLC

RADAR REQUIRED



ELEV 607	D TDZE 564
----------	-------------------

HIRL all Rwys
REIL Rwy 13L and 31L
TDZ/CL all Rwy except 13L, and 31L

356° to RW35L

CATEGORY	A	B	C	D
LPV DA	764/18		200 (200-1/2)	
LNAV/VNAV DA	928/40		364 (400-3/4)	
LNAV MDA	1020/24	456 (500-1/2)	1020/45	456 (500-7/8)

SC-2, 06 DEC 2018 to 03 JAN 2019

SC-2, 06 DEC 2018 to 03 JAN 2019