

WAAS CH 93805 W36B	APP CRS 356°	Rwy Idg 13400 TDZE 588 Apt Elev 607
--	------------------------	--

RNAV (GPS) RWY 36L

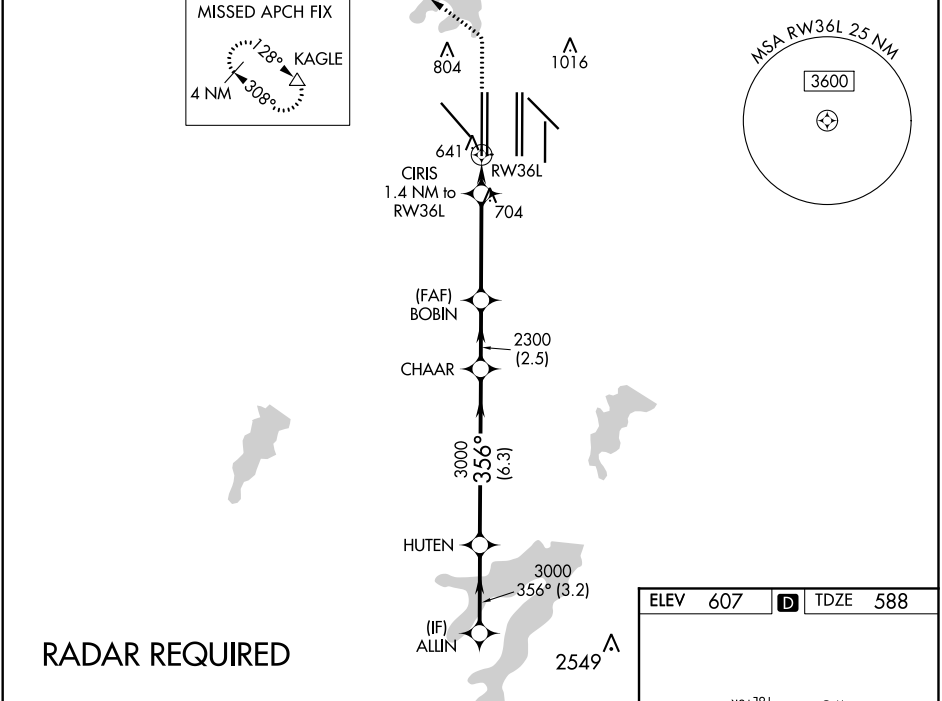
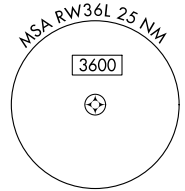
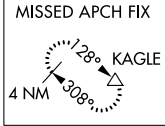
DALLAS-FORT WORTH INTL (DFW)

▼ For uncompensated Baro-VNAV systems, LNAV/VNAV NA below -4°C (25°F) or above 54°C (130°F). For inop MALSR, increase LNAV Cat C/D visibility to RVR 5500. Simultaneous approach authorized with Rwy 35L/C/R. DME/DME RNP-0.3 NA. LNAV procedure NA during simultaneous operations. Use of FD or AP providing RNAV track guidance required during simultaneous operations.

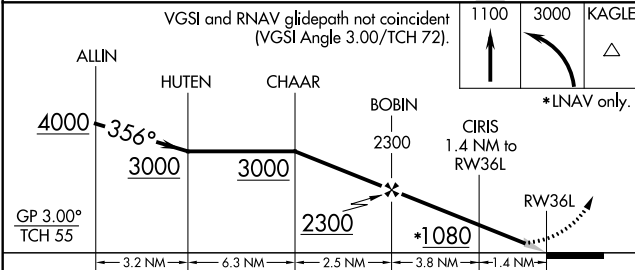


MISSED APPROACH: Climb to 1100 then climbing left turn to 3000 direct KAGLE and hold.

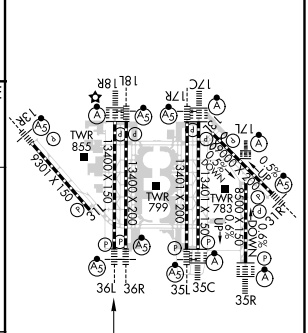
D-ATIS ARR 123.775 DEP 135.925	REGIONAL APP CON 118.425	DFW TOWER 126.55 127.5 EAST 124.15 134.9 WEST	GND CON 121.65 121.8 EAST 121.85 WEST	CLNC DEL 128.25	CPDLC
--	------------------------------------	---	---	---------------------------	-------



RADAR REQUIRED



ELEV 607	D TDZE 588
-----------------	--------------------------



CATEGORY	A	B	C	D
LPV DA	788/18 200 (200-1/2)			
LNAV/VNAV DA	987/45	399 (400-3/8)	987/45	399 (400-3/8)
LNAV MDA	960/24	372 (400-1/2)	960/35	372 (400-3/8)

HIRL all Rwy's
REIL Rwy's 13L and 31L
TDZ/CL all Rwy's except 13L and 31L

SC-2: 06 DEC 2018 to 03 JAN 2019

SC-2: 06 DEC 2018 to 03 JAN 2019