

WAAS CH 87005 W36A	APP CRS 356°	Rwy Idg 13400 TDZE 581 Apt Elev 607
--	------------------------	--

RNAV (GPS) RWY 36R

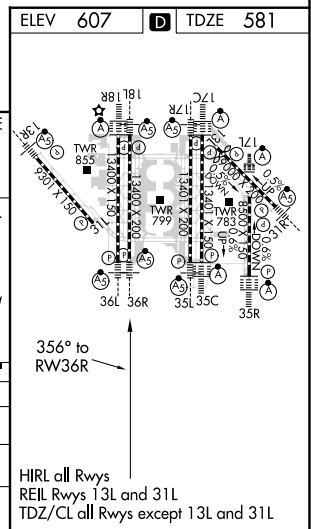
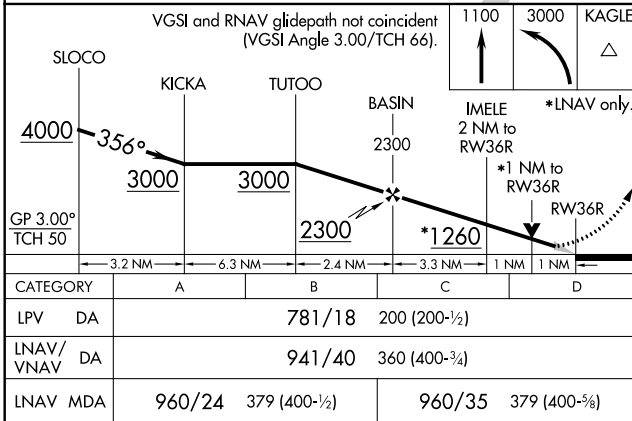
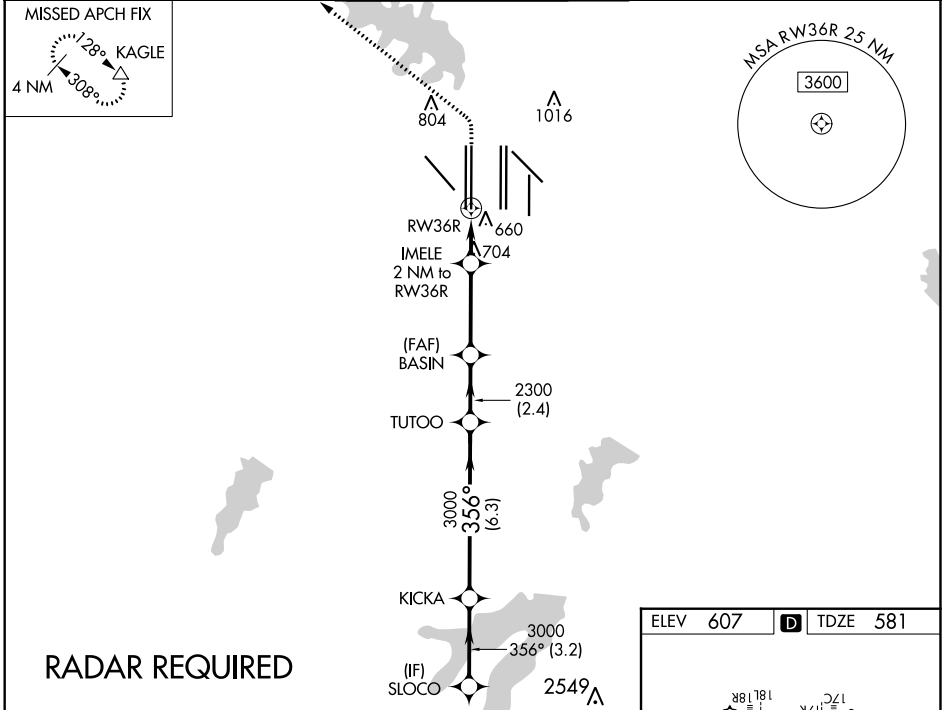
DALLAS-FORT WORTH INTL (DFW)

▽ For uncompensated Baro-VNAV systems, LNAV/VNAV NA below -4°C (25°F) or above 54°C (130°F). For inop MALS, increase LNAV Cats C/D visibility to RVR 5500. Simultaneous approach authorized with Rwy 35L/C/R. DME/DME RNP-0.3 NA. LNAV procedure NA during simultaneous operations. Use of FD or AP providing RNAV track guidance required during simultaneous operations.

MALS

MISSED APPROACH: Climb to 1100 then climbing left turn to 3000 direct KAGLE and hold.

D-ATIS ARR 123.775 DEP 135.925	REGIONAL APP CON 118.425	DFW TOWER 126.55 127.5 EAST 124.15 134.9 WEST	GND CON 121.65 121.8 EAST 121.85 WEST	CLNC DEL 128.25	CPDLC
--	------------------------------------	---	---	---------------------------	-------



SC-2. 06 DEC 2018 to 03 JAN 2019

SC-2. 06 DEC 2018 to 03 JAN 2019