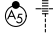


APP CRS 135°	Rwy Idg 9301
	TDZE 591
	Apt Elev 607

RNAV (RNP) Z RWY 13R

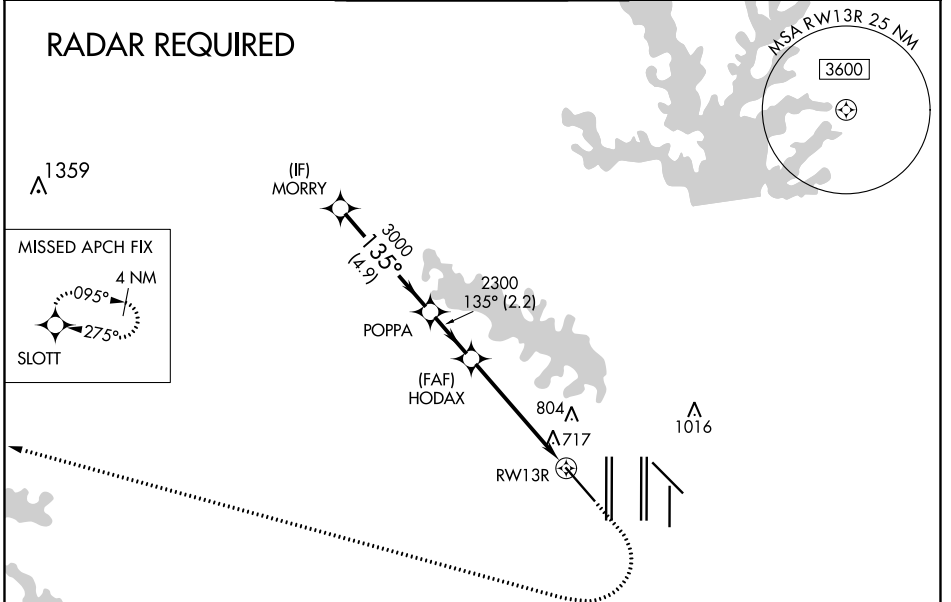
DALLAS-FORT WORTH INTL (DFW)

▽ For uncompensated Baro-VNAV systems, procedure NA below -4°C (25°F) or above 54°C (130°F). For inop MALS/R, increase RNP 0.30 all Cats visibility to 1½ mile. GPS Required.

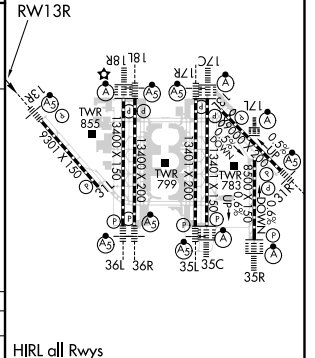
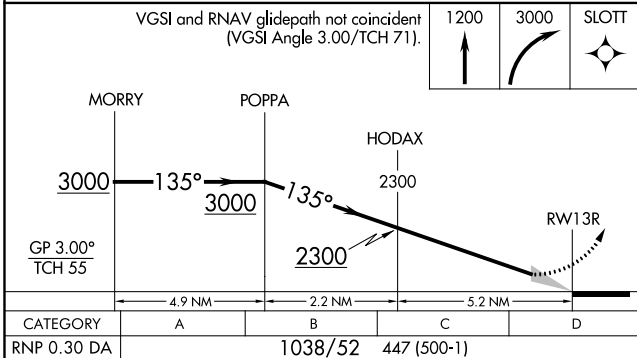
MALS/R 

MISSED APPROACH: Climb to 1200 then climbing right turn to 3000 direct SLOTT and hold.

D-ATIS ARR 123.775 DEP 135.925	REGIONAL APP CON 118.1 133.15	DFW TOWER 126.55 127.5 EAST 124.15 134.9 WEST	GND CON 121.65 121.8 EAST 121.85 WEST	CLNC DEL 128.25	CPDLC
--	---	---	---	---------------------------	-------



ELEV 607	D TDZE 591
----------	-------------------



HIRL all Rwys
REIL Rwys 13L and 31L
TDZ/CL all Rwys except 13L and 31L

AUTHORIZATION REQUIRED

SC-2: 06 DEC 2018 to 03 JAN 2019

SC-2: 06 DEC 2018 to 03 JAN 2019