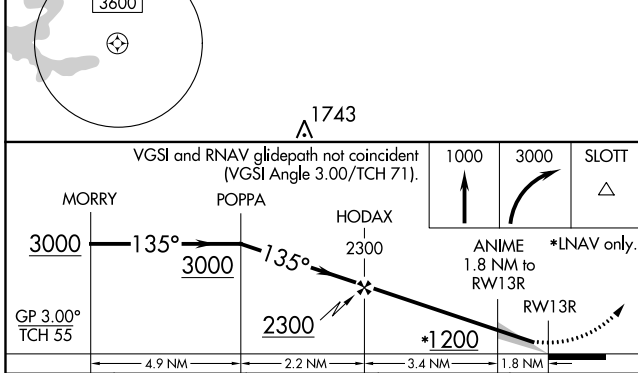
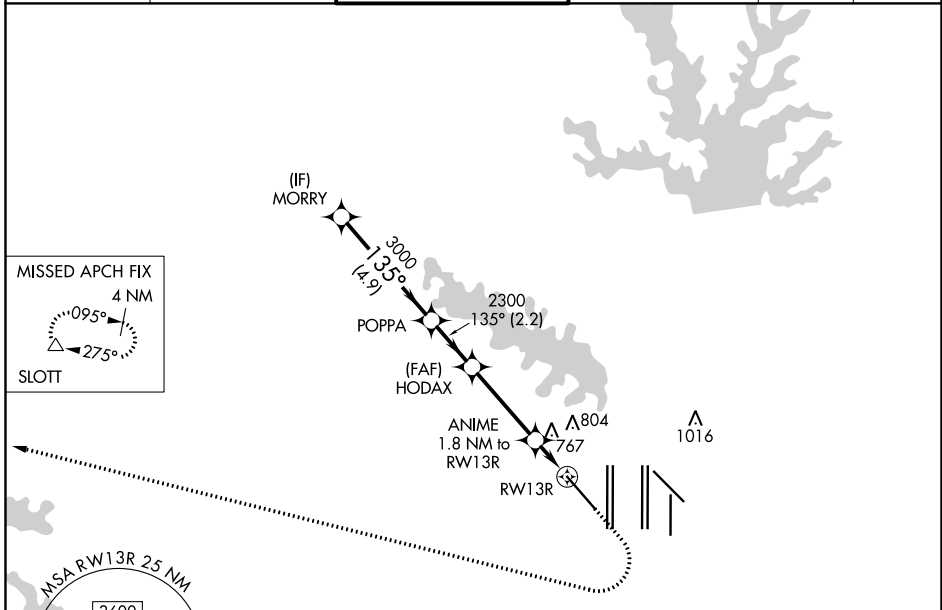


WAAS CH 72742 W13A	APP CRS 135°	Rwy Idg 9301 TDZE 591 Apt Elev 607
--	------------------------	---

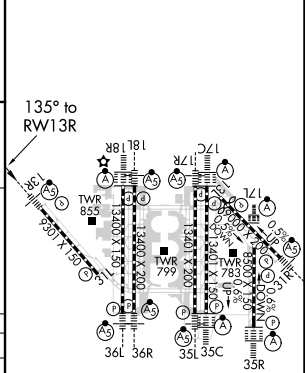
RNAV (GPS) Y RWY 13R

DALLAS-FORT WORTH INTL (DFW)

RNP APCH. ▼ For uncompensated Baro-VNAV systems, LNAV/VNAV NA below -6° C or above 54° C. For inop ALS, increase LNAV/VNAV all Cats visibility to RVR 5500 and LNAV Cat C/D visibility to 1½ SM.		MALSRL ▲	MISSED APPROACH: Climb to 1000 then climbing right turn to 3000 direct SLOTT and hold.		
D-ATIS ARR 123.775 DEP 135.925	REGIONAL APP CON 118.1 133.15	DFW TOWER 126.55 127.5 EAST 124.15 134.9 WEST	GND CON 121.65 121.8 EAST 121.85 WEST	CLNC DEL 128.25	CPDLC



ELEV 607	D	TDZE 591
----------	---	----------



CATEGORY	A	B	C	D
LPV DA		791/18	200 (200-½)	
LNAV/VNAV DA		967/35	376 (400-¾)	
LNAV MDA	1080/24	489 (500-½)	1080/50	489 (500-1)

HIRL all Rwws
REIL Rwws 13L and 31L
TDZ/CL all Rwws except 13L and 31L

SC-2, 06 DEC 2018 to 03 JAN 2019

SC-2, 06 DEC 2018 to 03 JAN 2019