

WAAS CH <b>99703</b> <b>W31A</b>	APP CRS <b>315°</b>	Rwy Idg <b>9301</b> TDZE <b>581</b> Apt Elev <b>607</b>
----------------------------------------	------------------------	---------------------------------------------------------------

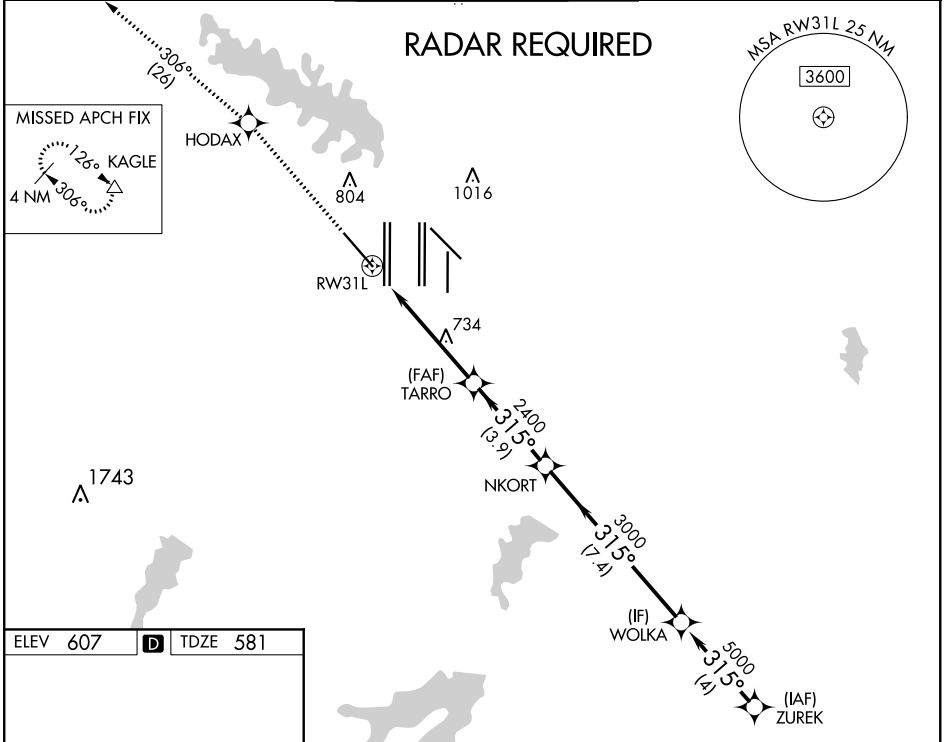
# RNAV (GPS) Y RWY 31L

DALLAS-FORT WORTH INTL (DFW)

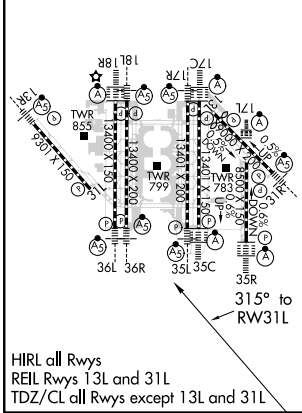
▼ For uncompensated Baro-VNAV systems, LNAV/VNAV NA below -4°C (25°F) or above 54°C (130°F). Simultaneous approach authorized with Rwy 31R. DME/DME RNP-0.3 NA. LNAV procedure NA during simultaneous operations. Use of FD or AP providing RNAV track guidance required during simultaneous operations.

MISSED APPROACH: Climb to 3000 direct HODAX and on track 306° to KAGLE and hold.

D-ATIS ARR <b>123.775</b> DEP <b>135.925</b>	REGIONAL APP CON <b>118.1 133.15</b>	DFW TOWER <b>126.55 127.5</b> EAST <b>124.15 134.9</b> WEST	GND CON <b>121.65 121.8</b> EAST <b>121.85</b> WEST	CLNC DEL <b>128.25</b>	CPDLC
----------------------------------------------------	-----------------------------------------	-------------------------------------------------------------------	-----------------------------------------------------------	---------------------------	-------



ELEV <b>607</b>	<b>D</b>	TDZE <b>581</b>
-----------------	----------	-----------------



3000	HODAX	tr 306°	KAGLE	VGSi and RNAV glidepath not coincident (VGSi Angle 3.13/TCH 72).			
*LNAV only.				WOLKA		ZUREK	
RWY 31L		TARRO	NKORT	315°		5000	
*1.2 NM to RWY 31L		2400	2400	3000		GP 3.00° TCH 54	
1.2		4.4 NM		3.9 NM		7.4 NM	
4 NM		4 NM		4 NM		4 NM	
CATEGORY	A		B		C		D
LPV DA	831/40		250 (300-¾)				
LNAV/VNAV DA	907/50		326 (400-1)				
LNAV MDA	1060/55		479 (500-1)		1060-1½		479 (500-1½)

SC-2. 06 DEC 2018 to 03 JAN 2019

SC-2. 06 DEC 2018 to 03 JAN 2019