

# TEXOMA FIVE DEPARTURE

D-ATIS DEP 135.925  
 CLNC DEL 128.25  
 CPDLC  
 GND CON 121.65 121.8 (EAST) 121.85 (WEST)  
 DFW TOWER 126.55 127.5 (EAST) 124.15 134.9 (WEST)  
 REGIONAL DEP CON  
 118.55 290.35 (Rwy 17R/C)  
 126.47 363.15 (Rwy 18R/L)  
 125.12 353.95 (Rwy 36R/L)  
 125.12 353.95 (Rwy 35L/C)

**ROLLS**  
 N35°43.36'  
 W99°28.24'  
 L-15, H-6

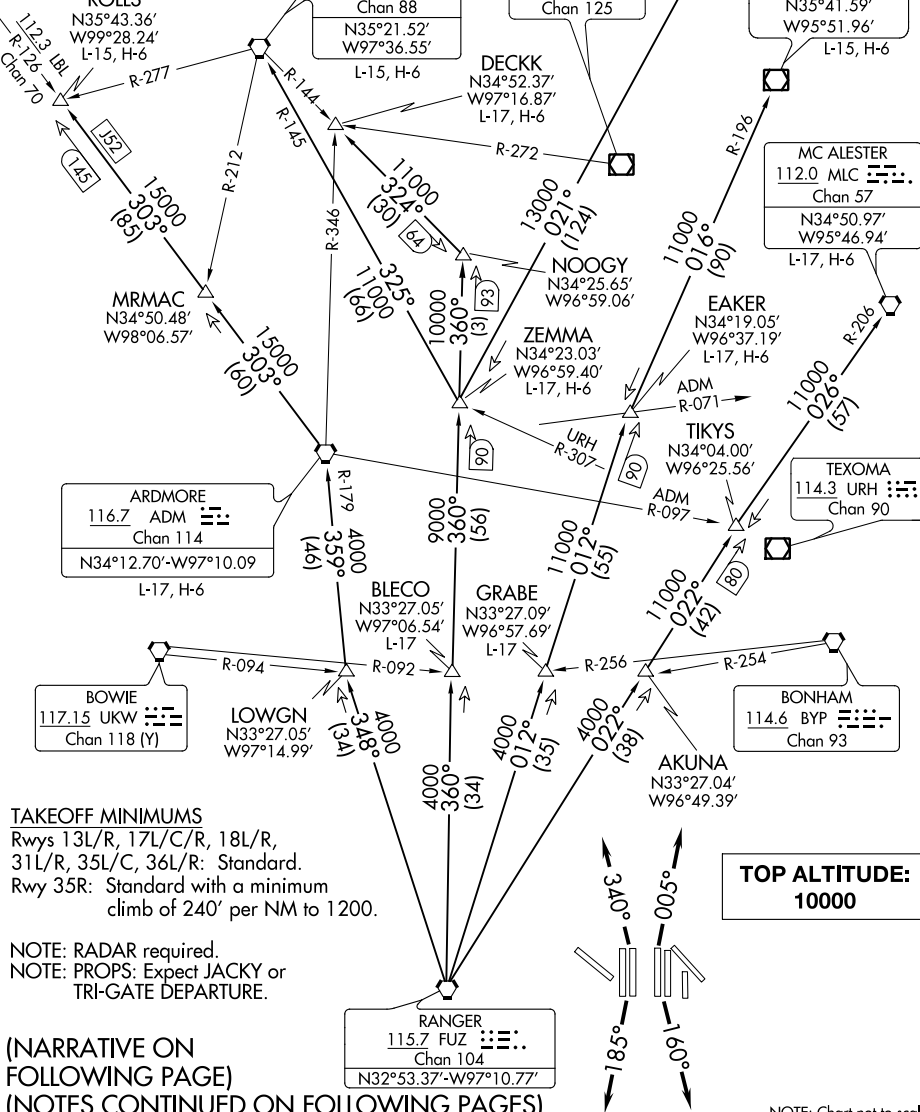
**WILL ROGERS**  
 114.1 IRW  
 Chan 88  
 N35°21.52'  
 W97°36.55'  
 L-15, H-6

**ADA**  
 117.8 ADH  
 Chan 125

**TULSA**  
 114.4 TUL  
 Chan 91  
 N36°11.78'  
 W95°47.29'  
 L-15, H-6

**OKMULGEE**  
 114.9 OKM  
 Chan 96  
 N35°41.59'  
 W95°51.96'  
 L-15, H-6

**MC ALESTER**  
 112.0 MLC  
 Chan 57  
 N34°50.97'  
 W95°46.94'  
 L-17, H-6



**TAKEOFF MINIMUMS**  
 Rwys 13L/R, 17L/C/R, 18L/R,  
 31L/R, 35L/C, 36L/R: Standard.  
 Rwy 35R: Standard with a minimum  
 climb of 240' per NM to 1200.

NOTE: RADAR required.  
 NOTE: PROPS: Expect JACKY or  
 TRI-GATE DEPARTURE.

(NARRATIVE ON  
 FOLLOWING PAGE)  
 (NOTES CONTINUED ON FOLLOWING PAGES)

**RANGER**  
 115.7 FUZ  
 Chan 104  
 N32°53.37'-W97°10.77'

**TOP ALTITUDE:  
 10000**

NOTE: Chart not to scale

SC-2. 06 DEC 2018 to 03 JAN 2019

SC-2. 06 DEC 2018 to 03 JAN 2019

# TEXOMA FIVE DEPARTURE