

WAAS CH <b>50317</b> <b>W17A</b>	APP CRS <b>175°</b>	Rwy ldg TDZE Apt Elev	<b>7198</b> <b>1791</b> <b>1791</b>
--	------------------------	-----------------------------	---

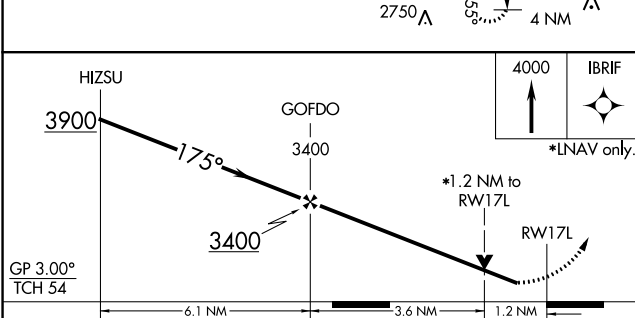
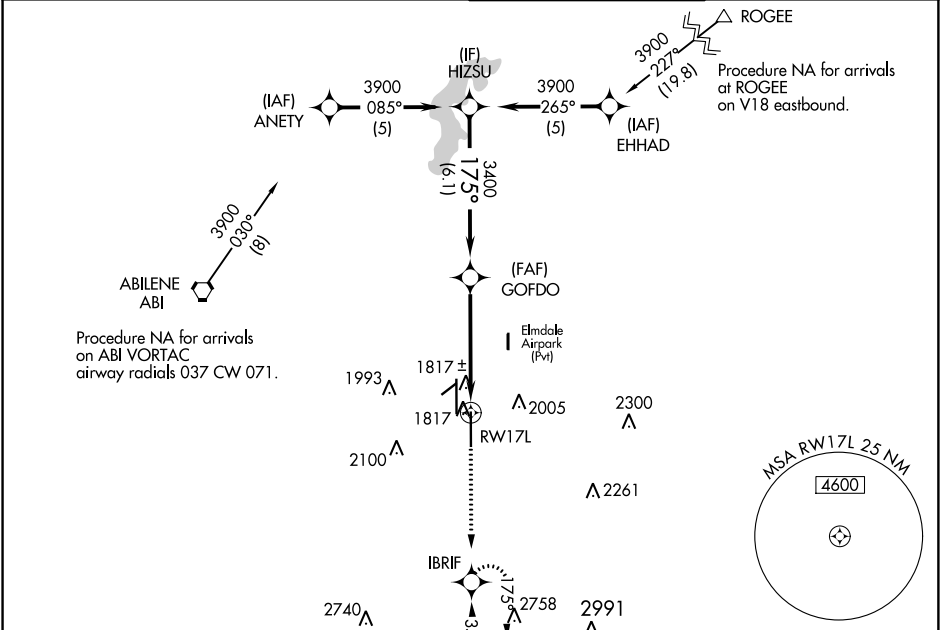
# RNAV (GPS) RWY 17L

ABILENE RGNL (ABI)

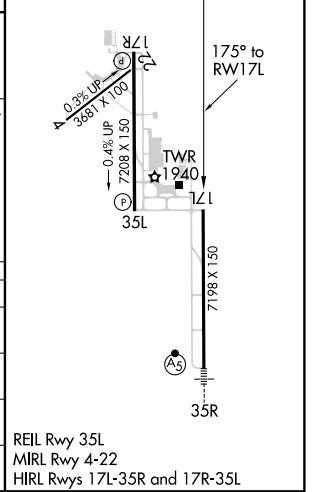
**⚠** For uncompensated Baro-VNAV systems, LNAV/VNAV NA below -18°C (0°F) or above 45°C (113°F). DME/DME RNP-0.3 NA.  
**⚠** ASR Rwy 17L helicopter visibility reduction below 3/4 SM NA.

MISSED APPROACH: Climb to 4000 direct IBRIF and hold, continue climb-in-hold to 4000.

ATIS <b>118.25</b>	ABILENE APP CON <b>125.0 338.3 (EAST)</b> <b>127.2 282.3 (WEST)</b>	ABILENE TOWER <b>120.1 257.8</b>	GND CON <b>121.7 348.6</b>
-----------------------	---	-------------------------------------	-------------------------------



ELEV 1791	<b>D</b> TDZE 1791
-----------	--------------------



CATEGORY	A	B	C	D	E
LPV DA	2041-3/4		250 (300-3/4)		
LNAV/VNAV DA	2171-1 1/4		380 (400-1 1/4)		
LNAV MDA	2240-1 449 (500-1)		2240-1 3/8 449 (500-1 3/8)		
<b>C</b> CIRCLING	2300-1 509 (600-1)	2320-1 529 (600-1)	2420-1 3/4 629 (700-1 3/4)	2460-2 669 (700-2)	2620-3 829 (900-3)

SC-2, 03 JAN 2019 to 31 JAN 2019

SC-2, 03 JAN 2019 to 31 JAN 2019