

WAAS CH <b>97517</b> <b>W35A</b>	APP CRS <b>355°</b>	Rwy Idg TDZE Apt Elev	<b>7198</b> <b>1776</b> <b>1791</b>
--	------------------------	-----------------------------	---

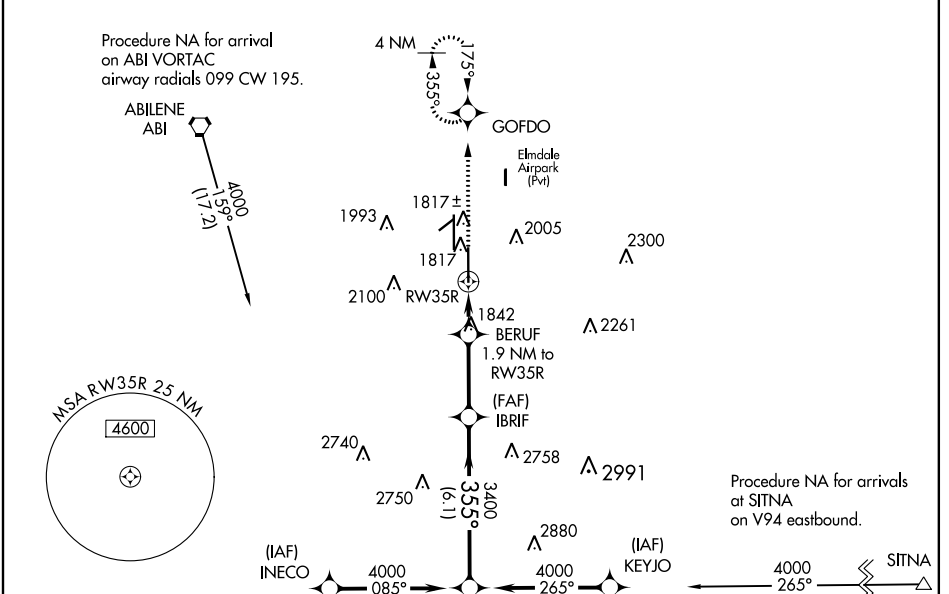
# RNAV (GPS) RWY 35R

ABILENE RGNL (ABI)

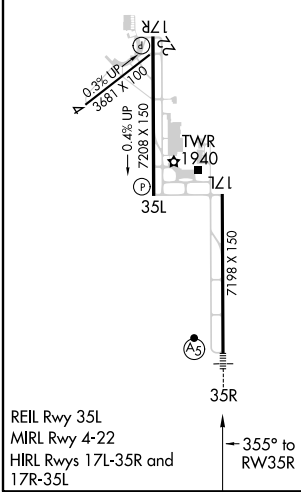
**⚠** For uncompensated Baro-VNAV systems, LNAV/VNAV NA below -18°C (0°F) or above 45°C (113°F). DME/DME RNP-0.3 NA. For inop ALS, increase LPV Cat E visibility to RVR 4000, increase LNAV/VNAV and LNAV Cat E visibility ½ SM. **ASR** \*\* RVR 1800 authorized with use of FD or AP or HUD to DA.

**MALSR** MISSED APPROACH: Climb to 4000 direct GOFDO and hold, continue climb-in-hold to 4000.

ATIS <b>118.25</b>	ABILENE APP CON <b>125.0 338.3 (EAST)</b> <b>127.2 282.3 (WEST)</b>	ABILENE TOWER <b>120.1 257.8</b>	GND CON <b>121.7 348.6</b>
-----------------------	---	-------------------------------------	-------------------------------



ELEV 1791	<b>D</b>	TDZE 1776
-----------	----------	-----------



4000	GOFDO	IBRIF	NILSE		
*LNAV only.	BERUF 1.9 NM to RW35R	3400	4000		
*1.3 NM to RW35R	*2440	3400	GP 3.00° TCH 58		
1.3 NM	0.6	3 NM	6.1 NM		
CATEGORY	A	B	C	D	E
LPV DA**	1976/24 200 (200-½)				
LNAV/VNAV DA	2189/50 413 (400-1)				
LNAV MDA	2260/24 484 (500-½)		2260/50 484 (500-1)		
<b>C</b> CIRCLING	2300-1 509 (600-1)	2320-1 529 (600-1)	2420-1¾ 629 (700-1¾)	2460-2 669 (700-2)	2620-3 829 (900-3)

SC-2, 03 JAN 2019 to 31 JAN 2019

SC-2, 03 JAN 2019 to 31 JAN 2019