

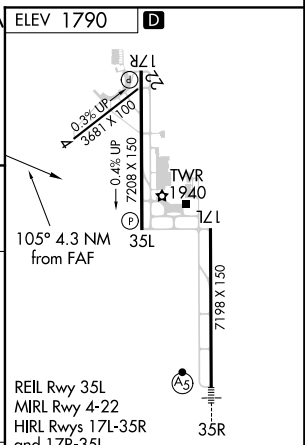
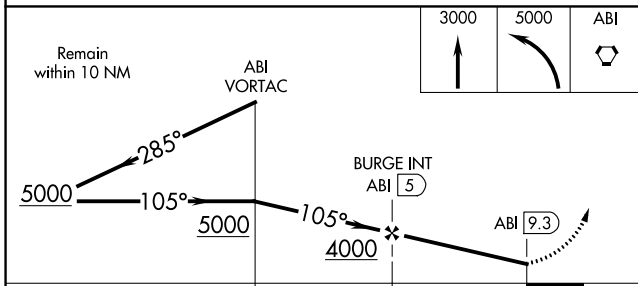
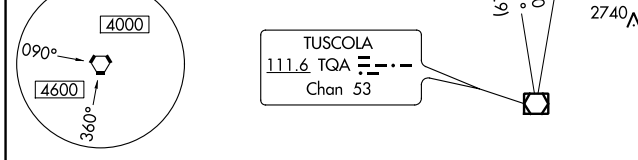
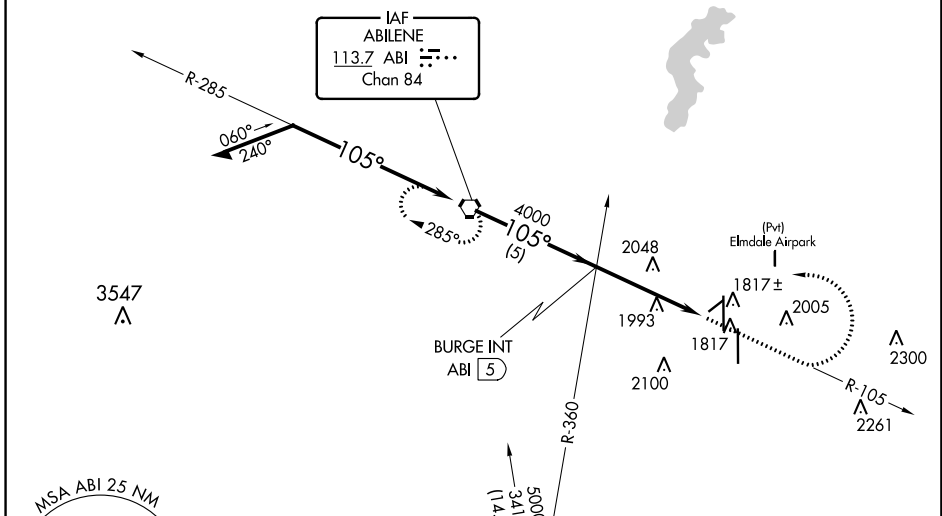
VOR ABI <b>113.7</b> Chan <b>84</b>	APP CRS <b>105°</b>	Rwy Idg TDZE Apt Elev <b>N/A</b> <b>N/A</b> <b>1790</b>
---	------------------------	--

# VOR or GPS-A

ABILENE RGNL (ABI)

ASR		MISSED APPROACH: Climb to 3000, then dimbing left turn to 5000 direct ABI VORTAC and hold.	
ATIS <b>118.25</b>	ABILENE APP CON <b>125.0 338.3 (EAST)</b> <b>127.2 282.3 (WEST)</b>	ABILENE TOWER <b>120.1 257.8</b>	GND CON <b>121.7 348.6</b>

NoPT for arrivals on ABI VORTAC  
airway radials 195 CW 318.



CATEGORY	A	B	C	D	FAF to MAP 4.3 NM					
CIRCLING	2300-1	510 (600-1)	2360-1½ 570 (600-1½)	2360-2 570 (600-2)	Knots	60	90	120	150	180
					Min:Sec	4:18	2:52	2:09	1:43	1:26

SC-2, 03 JAN 2019 to 31 JAN 2019

SC-2, 03 JAN 2019 to 31 JAN 2019