

CURLO FOUR DEPARTURE (RNAV)

DALLAS, TEXAS

TOP ALTITUDE:
RWY 13L/R: 8000
RWY 31L/R: 3000

- NOTE: RADAR required.
 NOTE: DME/DME/IRU or GPS required.
 NOTE: RNAV 1.
 NOTE: For use by turbojet aircraft only.
 NOTE: Props file and expect JOE POOL DEPARTURE.
 NOTE: WACO TRANSITION: For aircraft inbound to Waco or Gray terminal area airports.
 NOTE: SAN ANTONIO TRANSITION: For aircraft overflying CENTEX and SAN ANTONIO.
 NOTE: WINDU TRANSITION: For aircraft inbound to Austin or San Antonio terminal area airports. Aircraft should file and/or expect BLEWE or MARCS STAR at WINDU.
 NOTE: COLLEGE STATION TRANSITION: For aircraft inbound to west Houston terminal area airports.
 NOTE: ELLVR TRANSITION: For aircraft inbound to Houston HOBBY, EFD, GLS, and LBX.
 NOTE: TORNN TRANSITION: For aircraft landing Lafayette, Lake Charles, or Beaumont/Port Arthur airports.
 NOTE: BILEE TRANSITION: For aircraft overflying the BILEE intersection, thence via the appropriate STAR to GEORGE BUSH INTERCONTINENTAL or eastern Houston terminal airports.
 NOTE: Use the JOE POOL DEPARTURE during the period 2100-0600 local time in lieu of the CURLO DEPARTURE.

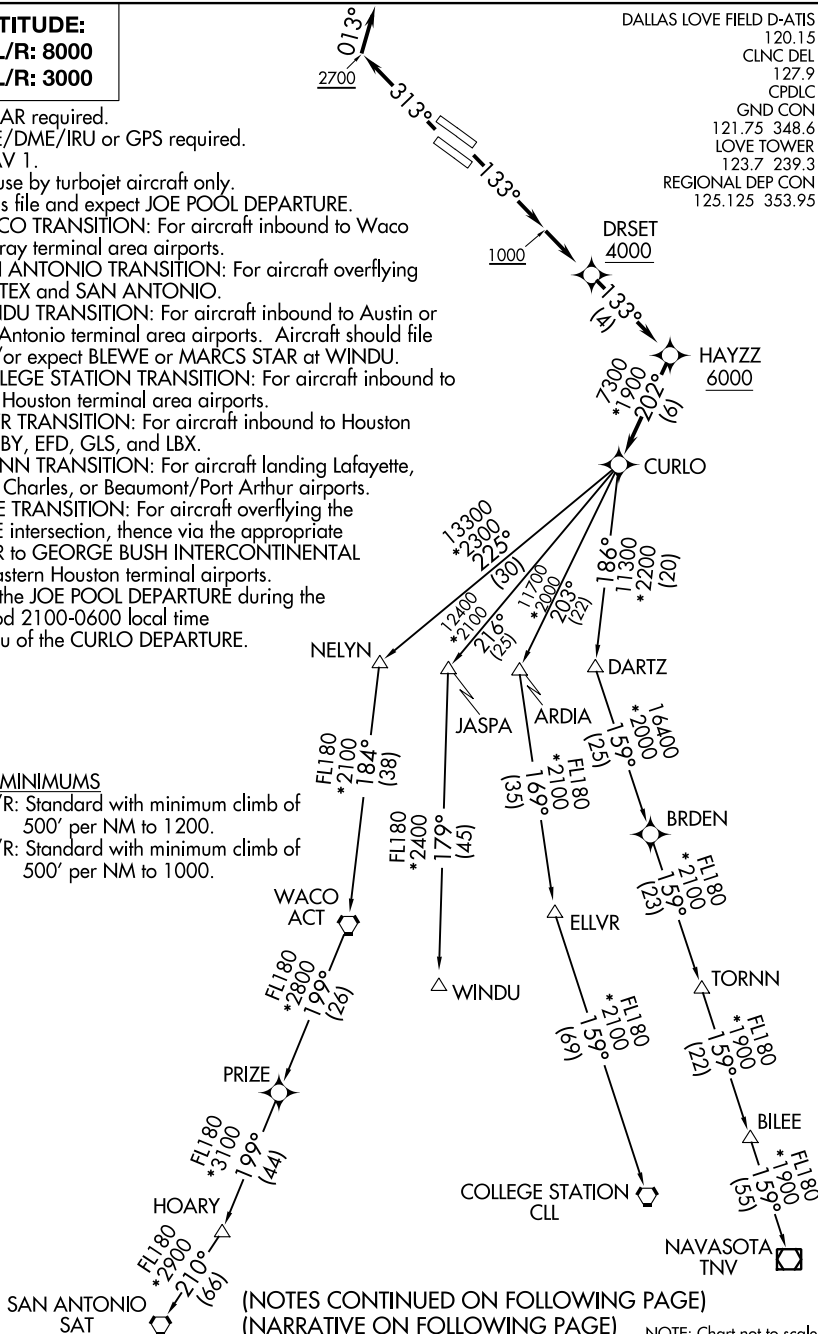
DALLAS LOVE FIELD D-ATIS
 120.15
 CLNC DEL
 127.9
 CPDLC
 GND CON
 121.75 348.6
 LOVE TOWER
 123.7 239.3
 REGIONAL DEP CON
 125.125 353.95

SC-2, 03 JAN 2019 to 31 JAN 2019

SC-2, 03 JAN 2019 to 31 JAN 2019

TAKEOFF MINIMUMS

Rwys 13L/R: Standard with minimum climb of 500' per NM to 1200.
 Rwys 31L/R: Standard with minimum climb of 500' per NM to 1000.



(NOTES CONTINUED ON FOLLOWING PAGE)
 (NARRATIVE ON FOLLOWING PAGE)

NOTE: Chart not to scale.

CURLO FOUR DEPARTURE (RNAV)

DALLAS, TEXAS