

LOC/DME I-OVW 111.5 Chan 52	APP CRS 313°	Rwy Idg TDZE 487 Apt Elev 487
---	------------------------	---

ILS or LOC RWY 31R

DALLAS LOVE FIELD (DAL)

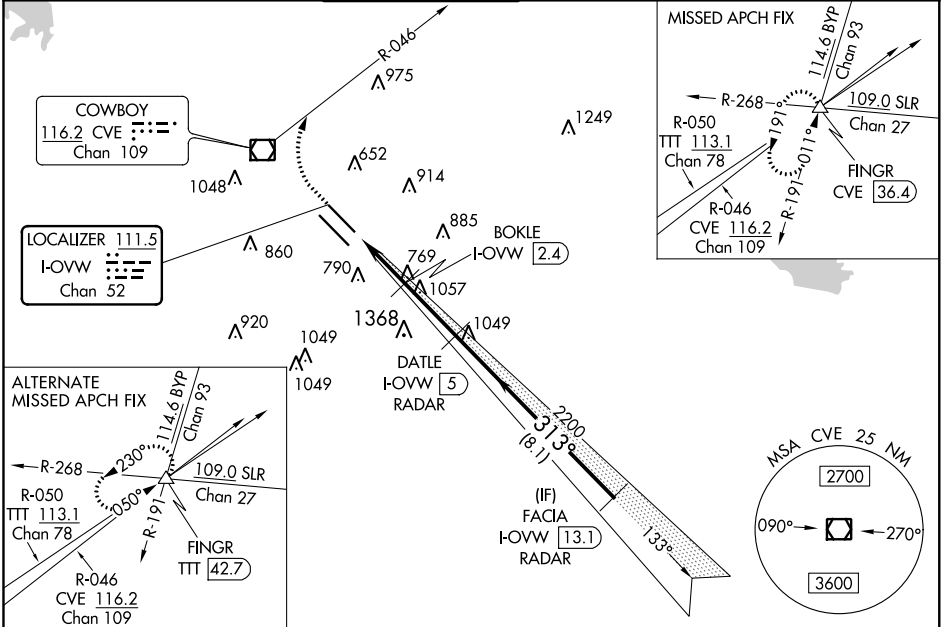
DME or RADAR required for LOC only.
RADAR required for procedure entry.

Simultaneous approach authorized.
** RVR 1800 authorized with use of FD or AP or HUD to DA.

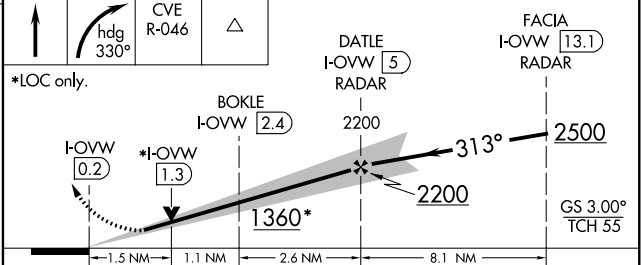
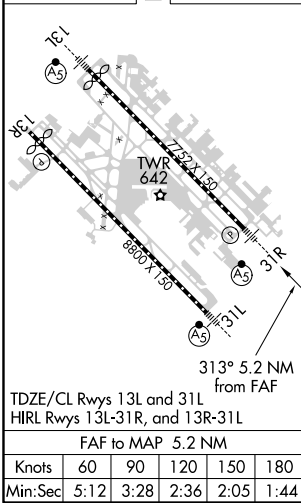
MALSR

MISSED APPROACH: Climb to 1000 then climbing right turn to 5000 on heading 330° and CVE VOR/ DME R-046 to FINGR INT/CVE 36.4 DME and hold.

D-ATIS 120.15	REGIONAL APP CON NORTH 124.3 282.275 SOUTH 125.2 343.65	LOVE TOWER 123.7 239.3	GND CON 121.75 348.6	CLNC DEL 127.9	CPDLC
-------------------------	---	----------------------------------	--------------------------------	--------------------------	-------



ELEV 487	D	TDZE 487	1000	5000	CVE R-046	FINGR	VGSI and ILS glidepath not coincident.
-----------------	----------	-----------------	------	------	-----------	-------	--



CATEGORY	A	B	C	D
S-ILS 31R **	687/24 200 (200-½)			
S-LOC 31R	1360/24	873 (900-½)	1360-2	873 (900-2)
C CIRCLING	1360-1¼	873 (900-1¼)	1360-2½	1520-3
BOKLE FIX MINIMUMS (DME REQUIRED)				
S-LOC 31R	1020/24	533 (600-½)	1020/55	533 (600-1)
C CIRCLING	1020-1	533 (600-1)	1140-1	653 (700-1)
			1220-2	733 (800-2)
				1520-3
				1033 (1100-3)

SC-2, 03 JAN 2019 to 31 JAN 2019

SC-2, 03 JAN 2019 to 31 JAN 2019