

LOC/DME I-DAL	APP CRS	Rwy Idg	7352
111.5	133°	TDZE	485
Chan 52		Apt Elev	487

ILS Y or LOC Y RWY 13L

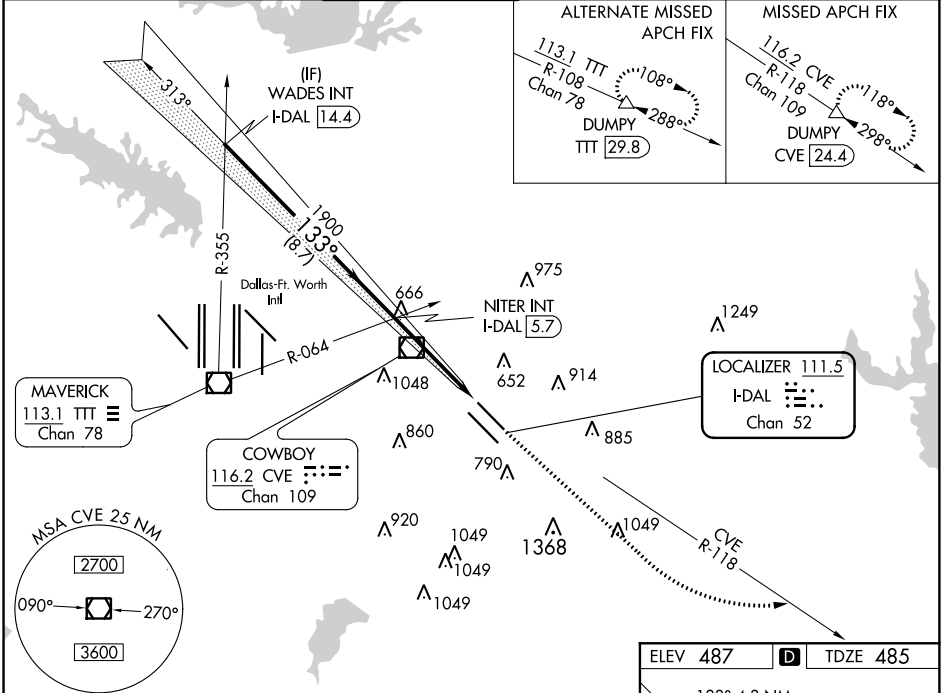
DALLAS LOVE FIELD (DAL)

DME required. RADAR required for procedure entry.
 Simultaneous approach authorized.



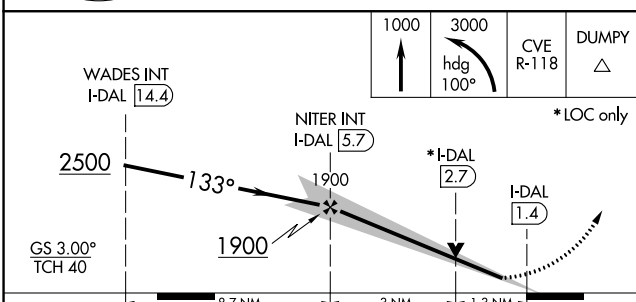
MISSED APPROACH: Climb to 1000 then climbing left turn to 3000 on heading 100° and CVE VOR/DME R-118 to DUMPY/CVE 24.4 DME and hold.

D-ATIS	REGIONAL APP CON	LOVE TOWER	GND CON	CLNC DEL	CPDLC
120.15	NORTH 124.3 282.275 SOUTH 125.2 343.65	123.7 239.3	121.75 348.6	127.9	

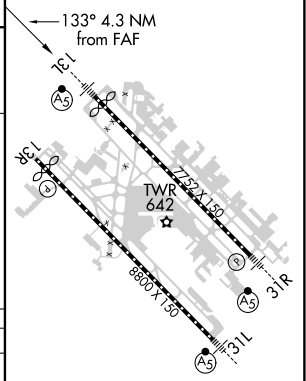


SC-2, 03 JAN 2019 to 31 JAN 2019

SC-2, 03 JAN 2019 to 31 JAN 2019



ELEV 487	D	TDZE 485
----------	---	----------



CATEGORY	A	B	C	D
S-ILS 13L	685/18		200 (200-½)	
S-LOC 13L	920/24	435 (500-½)	920/40	435 (500-¾)
CIRCLING	1080-1 593 (600-1)	1140-1 653 (700-1)	1220-2 733 (800-2)	1520-3 1033 (1100-3)

TDZ/CL Rwys 13L and 31L
 HIRL Rwys 13L-31R, and 13R-31L