

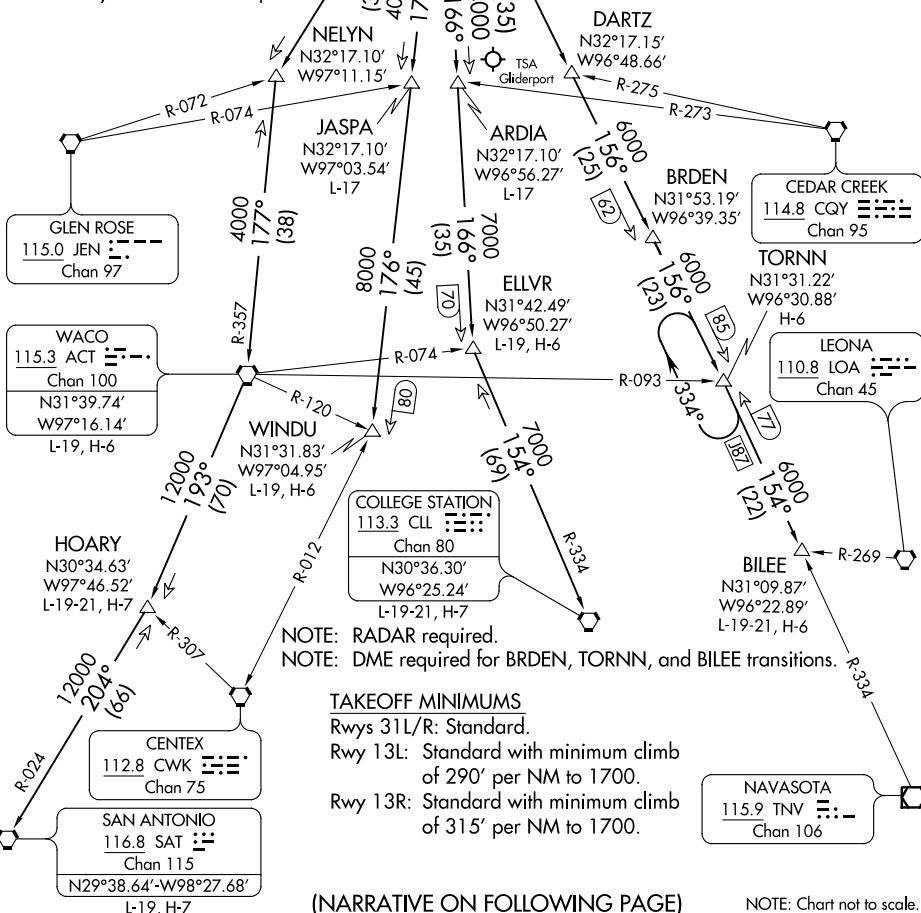
JOE POOL NINE DEPARTURE

D-ATIS 120.15
 CLNC DEL 127.9
 CPDLC
 GND CON 121.75 348.6
 LOVE TOWER 123.7 239.3
 REGIONAL DEP CON
 125.12 353.95 (departing Rwy 13L/R)
 118.55 290.35 (departing Rwy 31L/R)

TOP ALTITUDE:
RWY 13L/R: 8000
RWY 31L/R: 5000

MAVERICK
 113.1 TTT
 Chan 78
 N32°52.15'
 W97°02.43'

NOTE: Rwy 31L/R: DME required.



NOTE: RADAR required.

NOTE: DME required for BRDEN, TORNN, and BILEE transitions.

TAKEOFF MINIMUMS

Rwys 31L/R: Standard.

Rwy 13L: Standard with minimum climb of 290' per NM to 1700.

Rwy 13R: Standard with minimum climb of 315' per NM to 1700.

(NARRATIVE ON FOLLOWING PAGE)

NOTE: Chart not to scale.

SC-2, 03 JAN 2019 to 31 JAN 2019

SC-2, 03 JAN 2019 to 31 JAN 2019

JOE POOL NINE DEPARTURE