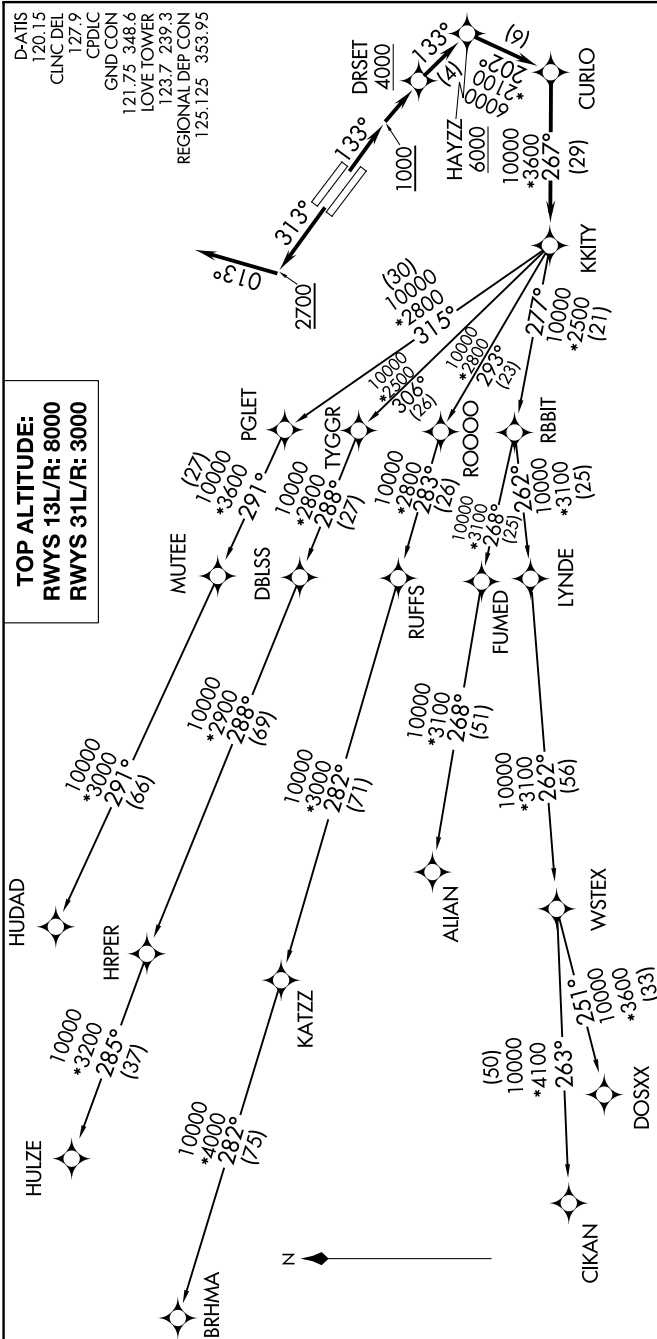


KKITY FOUR DEPARTURE (RNAV)

SC-2, 03 JAN 2019 to 31 JAN 2019



TAKEOFF MINIMUMS
RWys 13L/R: Standard with minimum climb of 500' per NM to 1200.
RWys 31L/R: Standard with minimum climb of 500' per NM to 1000.

(NARRATIVE ON FOLLOWING PAGE)
(NOTES CONTINUED ON FOLLOWING PAGE)

- NOTE: RADAR required.
- NOTE: DME/DME/IRU or GPS required.
- NOTE: RNAV 1.
- NOTE: For use by turbojet aircraft only.
- NOTE: RNAV-capable props: File and expect the SWABR RNAV SID.
- NOTE: Use WORTH DEPARTURE during the period 2100-0600 local time in lieu of the KKITY DEPARTURE.
- NOTE: ALIAN TRANSITION: ATC assigned only.
- NOTE: BRHMA TRANSITION: For aircraft inbound to Lubbock terminal area.
- NOTE: WSTEX TRANSITION: For aircraft inbound to Abilene and San Angelo terminal area airports only.

NOTE: Chart not to scale.

KKITY FOUR DEPARTURE (RNAV)

SC-2, 03 JAN 2019 to 31 JAN 2019