

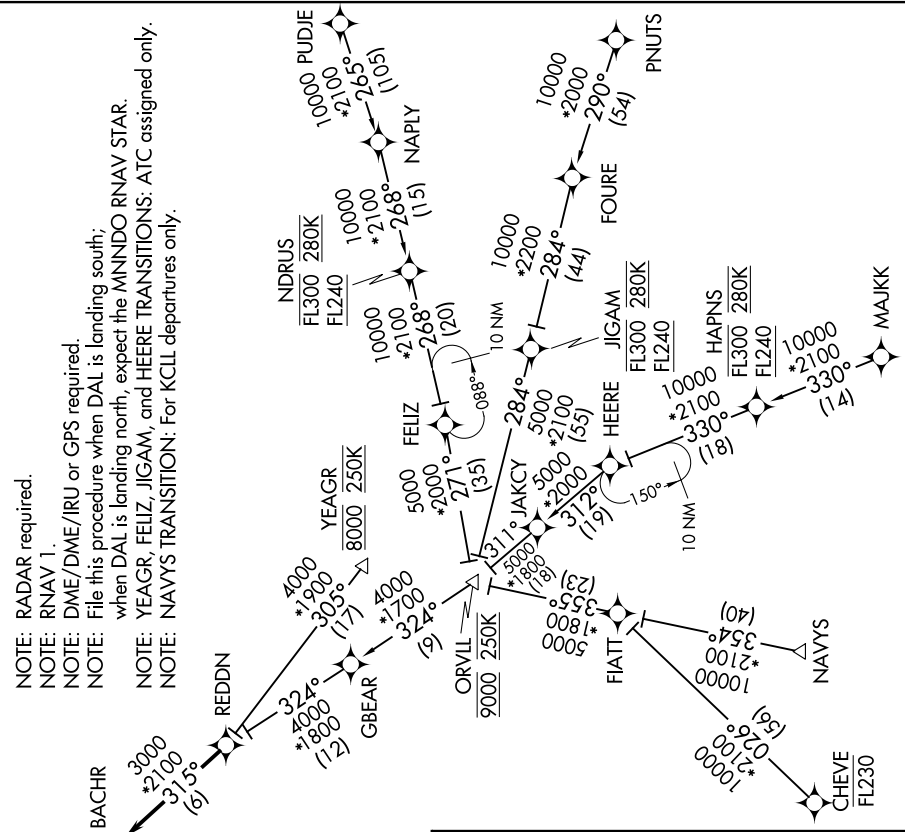
# REDDN FOUR ARRIVAL (RNAV)

SC-2, 03 JAN 2019 to 31 JAN 2019

D-ATIS  
120.15  
REGIONAL APP CON  
125.27 308.4  
125.025 263.025



- NOTE: RADAR required.
- NOTE: RNAV 1.
- NOTE: DME/DME/IRU or GPS required.
- NOTE: File this procedure when DAL is landing south; when DAL is landing north, expect the MNINDO RNAV STAR.
- NOTE: YEAGR, FELIZ, JIGAM, and HEERE transitions: ATC assigned only.
- NOTE: NAVYS TRANSITION: For KCLL departures only.



## ARRIVAL ROUTE DESCRIPTION

- CHEVE TRANSITION (CHEVE.REDDN4)
- FELIZ TRANSITION (FELIZ.REDDN4)
- HEERE TRANSITION (HEERE.REDDN4)
- JIGAM TRANSITION (JIGAM.REDDN4)
- MAJJK TRANSITION (MAJJK.REDDN4)
- NAVYS TRANSITION (NAVYS.REDDN4)
- PNUTS TRANSITION (PNUTS.REDDN4)
- PUDJIE TRANSITION (PUDJIE.REDDN4)
- YEAGR TRANSITION (YEAGR.REDDN4)

From REDDN on track 31.5° to BACHR, then on track 31.5°. Expect RADAR vectors to find approach course.

NOTE: Chart not to scale.

SC-2, 03 JAN 2019 to 31 JAN 2019

# REDDN FOUR ARRIVAL (RNAV)