



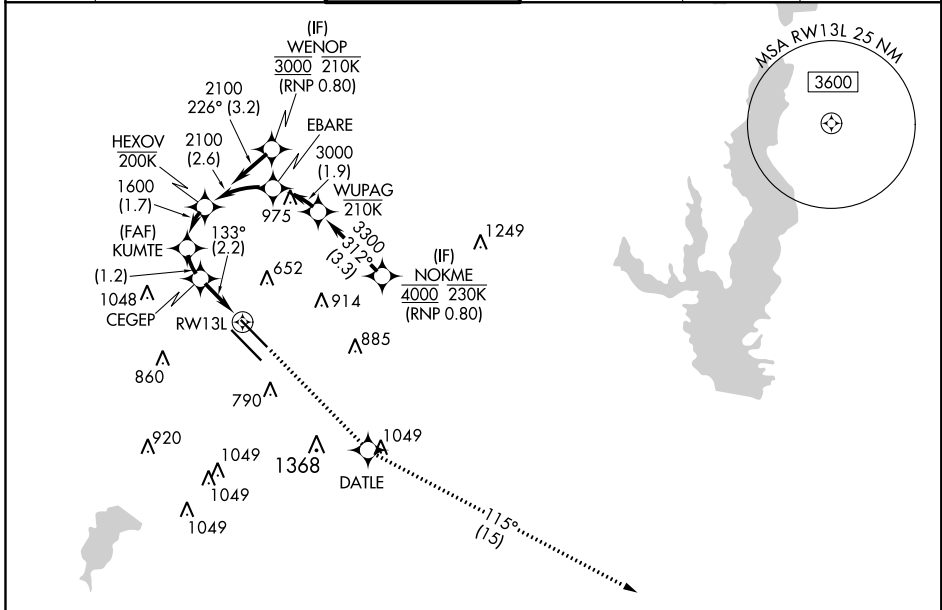
APP CRS	Rwly Idg	7352
133°	TDZE	485
	Apt Elev	487

RNAV (RNP) W RWY 13L

DALLAS LOVE FIELD (DAL)

RNP AR APCH. RF required.		 MISSED APPROACH: Climb to 3000 direct DATLE and on track 115° to DUMPY and hold.
 Simultaneous approach authorized. For uncompensated Baro-VNAV systems, procedure NA below -6°C or above 54°C. For inop ALS, increase RNP 0.11 all Cats visibility to RVR 4500.		

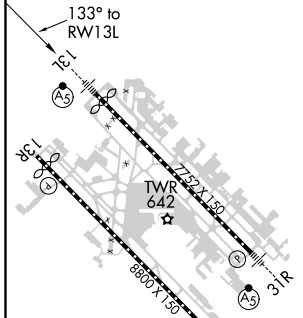
D-ATIS 120.15	REGIONAL APP CON NORTH 124.3 282.275 SOUTH 125.2 343.65	LOVE TOWER 123.7 239.3	GND CON 121.75 348.6	CLNC DEL 127.9	CPDLC
-------------------------	---	----------------------------------	--------------------------------	--------------------------	-------



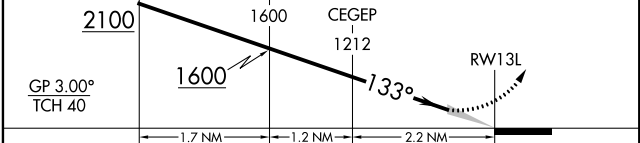
SC-2, 03 JAN 2019 to 31 JAN 2019

SC-2, 03 JAN 2019 to 31 JAN 2019

ELEV 487	D	TDZE 485
-----------------	----------	-----------------



See planview for multiple IF locations.	3000	DATLE	tr 115°	DUMPY
---	------	-------	---------	-------



CATEGORY	A	B	C	D
RNP 0.11 DA	754/24		269 (300-½)	
RNP 0.30 DA	846/40		361 (400-¾)	

AUTHORIZATION REQUIRED