

# RNAV (RNP) X RWY 13L


DALLAS LOVE FIELD (DAL)

APP CRS	Rwy Idg	<b>7352</b>
<b>133°</b>	TDZE	<b>485</b>
	Apt Elev	<b>487</b>

**RNP AR APCH.**

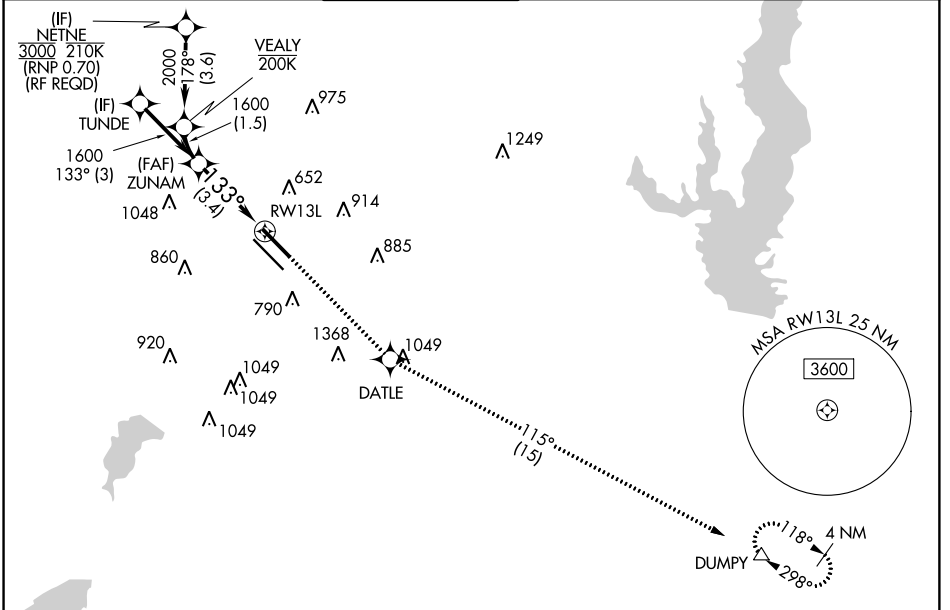
▼ Simultaneous approach authorized. For uncompensated Baro-VNAV systems, procedure NA below -6°C or above 54°C. For inop ALS, increase RNP 0.11 all Cats visibility to RVR 4500.

**MALSR**



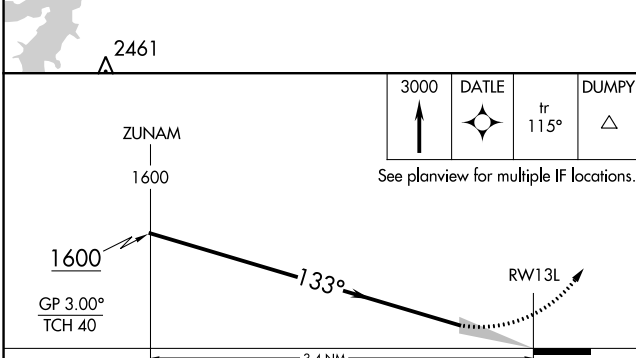
**MISSED APPROACH:** Climb to 3000 direct DATLE and on track 115° to DUMPY and hold.

D-ATIS	REGIONAL APP CON	LOVE TOWER	GND CON	CLNC DEL	CPDLC
<b>120.15</b>	NORTH <b>124.3</b> <b>282.275</b> SOUTH <b>125.2</b> <b>343.65</b>	<b>123.7</b> <b>239.3</b>	<b>121.75</b> <b>348.6</b>	<b>127.9</b>	

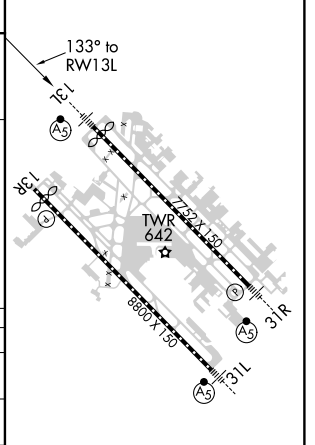


SC-2, 03 JAN 2019 to 31 JAN 2019

SC-2, 03 JAN 2019 to 31 JAN 2019



ELEV 487	<b>D</b> TDZE 485
----------	-------------------



CATEGORY	A	B	C	D
RNP 0.11 DA		754/24	269 (300-½)	
RNP 0.30 DA		846/40	361 (400-¾)	

**AUTHORIZATION REQUIRED**

TDZ/CL Rwys 13L and 31L  
HIRL Rwys 13L-31R, and 13R-31L