

APP CRS 313°	Rwy Idg TDZE Apt Elev	8000 476 487
------------------------	-----------------------------	-----------------------------------------

RNAV (RNP) Z RWY 31L

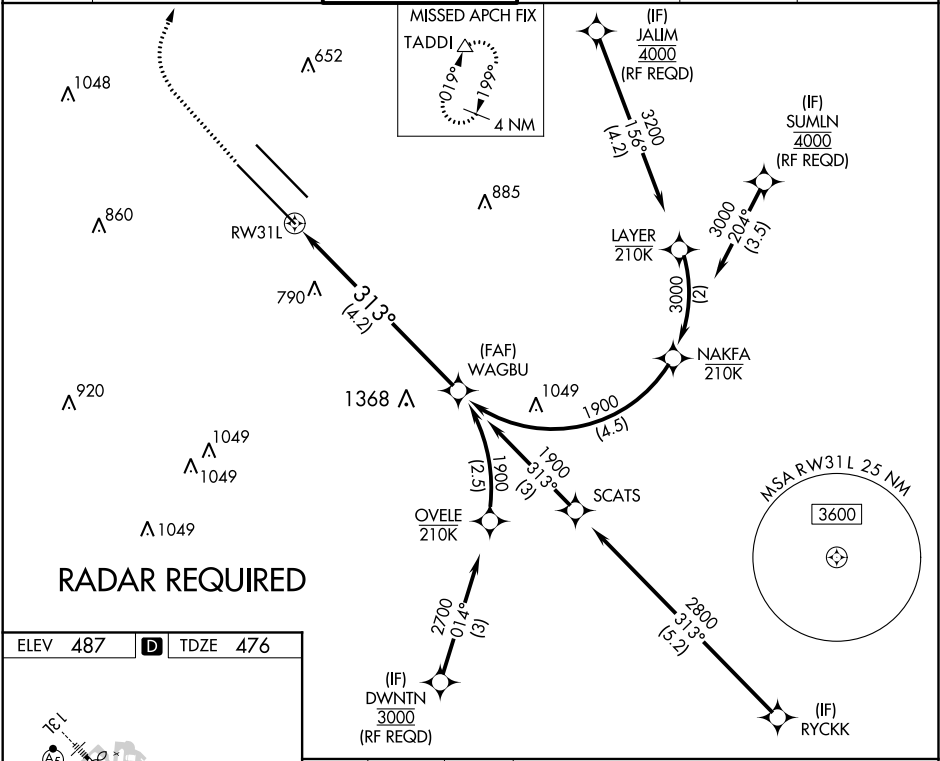
DALLAS LOVE FIELD (DAL)

▼ For uncompensated Baro-VNAV systems, procedure NA below -5°C (23°F) or above 48°C (119°F). Simultaneous approach authorized. GPS required. Use of FD or AP providing RNAV track guidance required during simultaneous operations. For inop MALS, increase RNP 0.30 visibility all Cats to 2½ miles.



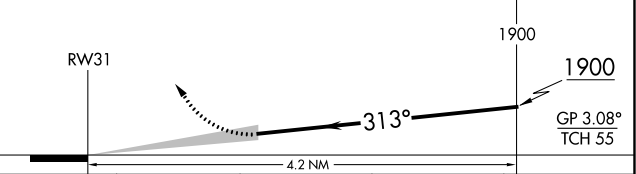
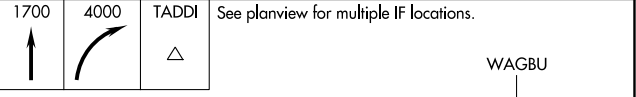
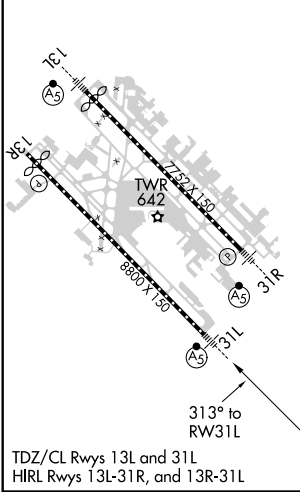
MISSED APPROACH: Climb to 1700 then climbing right turn to 4000 direct TADDI and hold.

D-ATIS 120.15	REGIONAL APP CON NORTH 124.3 282.275 SOUTH 125.2 343.65	LOVE TOWER 123.7 239.3	GND CON 121.75 348.6	CLNC DEL 127.9	CPDLC
-------------------------	-----------------------------------------------------------------------------	----------------------------------	--------------------------------	--------------------------	-------



RADAR REQUIRED

ELEV 487	D	TDZE 476
----------	----------	----------



CATEGORY	A	B	C	D
RNP 0.30 DA		1117-1½	641 (700-1½)	

AUTHORIZATION REQUIRED

SC-2, 03 JAN 2019 to 31 JAN 2019

SC-2, 03 JAN 2019 to 31 JAN 2019