

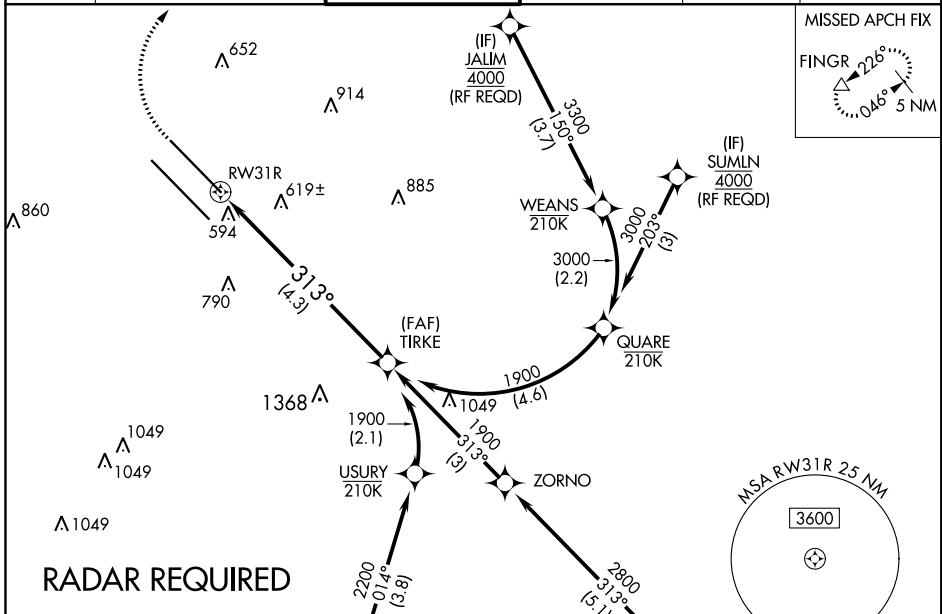
# RNAV (RNP) Z RWY 31R

DALLAS LOVE FIELD (DAL)

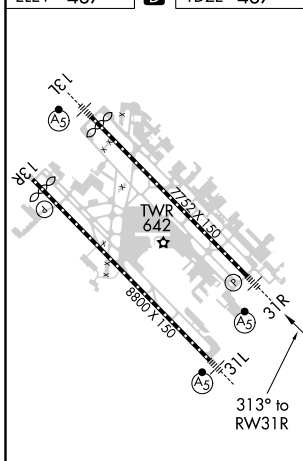
APP CRS <b>313°</b>	Rwy Idg <b>6952</b> TDZE <b>487</b> Apt Elev <b>487</b>
------------------------	---

<p>▼ For uncompensated Baro-VNAV systems, procedure NA below -5°C (23°F) or above 54°C (130°F). GPS required. Use of FD or AP providing RNAV track guidance required during simultaneous operations. Simultaneous approach authorized.</p>	<p>MALSR</p>	<p>MISSED APPROACH: Climb to 900 then climbing right turn to 5000 direct FINGR and hold.</p>

D-ATIS <b>120.15</b>	REGIONAL APP CON NORTH <b>124.3 282.275</b> SOUTH <b>125.2 343.65</b>	LOVE TOWER <b>123.7 239.3</b>	GND CON <b>121.75 348.6</b>	CLNC DEL <b>127.9</b>	CPDLC
-------------------------	---	----------------------------------	--------------------------------	--------------------------	-------

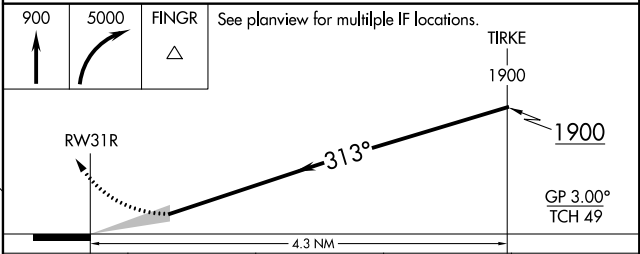


ELEV 487 **D** TDZE 487



TDZ/CL Rwy 13L and 31L  
HIRL Rwy 13L-31R, and 13R-31L

900	5000	FINGR	See planview for multiple IF locations.
-----	------	-------	---



CATEGORY	A	B	C	D
RNP 0.16 DA		796/24	309 (400-½)	
RNP 0.30 DA		895/45	408 (500-¾)	

## AUTHORIZATION REQUIRED

SC-2, 03 JAN 2019 to 31 JAN 2019

SC-2, 03 JAN 2019 to 31 JAN 2019