

SNSET FOUR DEPARTURE (RNAV)

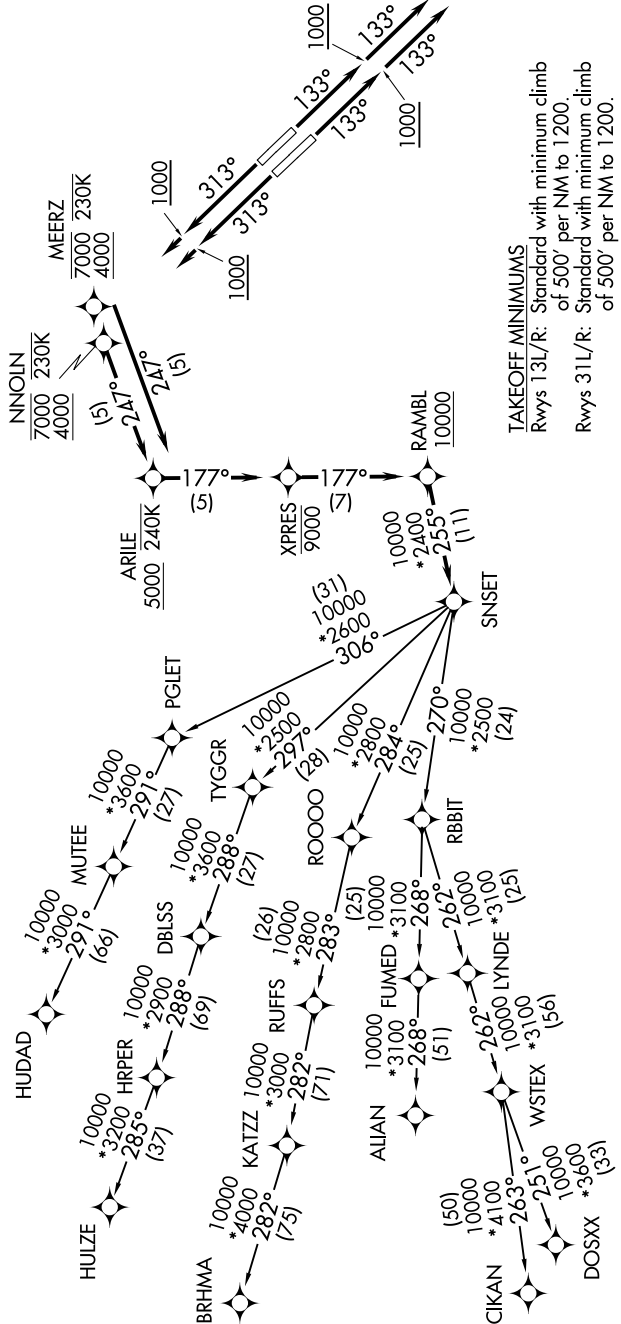
DALLAS, TEXAS

SC-2, 03 JAN 2019 to 31 JAN 2019

TOP ALTITUDE:
RWYS 13L/R: 3000
RWYS 31L/R: 10000

- NOTE: RADAR required.
- NOTE: DME/DME/IRU or GPS required.
- NOTE: RNAV 1.
- NOTE: For use by turbojet aircraft only.
- NOTE: RNAV-capable props: File and expect the SWABR RNAV SID.
- NOTE: ALIEN TRANSITION: ATC assigned only.
- NOTE: Aircraft landing in Lubbock terminal area file the BRHMA enroute transition.

- D-ATIS 120.15
- CLNC DEL 127.9
- CPDLC
- GND CON 121.75 348.6
- LOVE TOWER 123.7 239.3
- REGIONAL DEP CON 126.475 363.15



TAKEOFF MINIMUMS
 Rwy 13L/R: Standard with minimum climb of 500' per NM to 1200.
 Rwy 31L/R: Standard with minimum climb of 500' per NM to 1200.

(NARRATIVE ON FOLLOWING PAGE)
 (NOTES CONTINUED ON FOLLOWING PAGE)

NOTE: Chart not to scale.

SC-2, 03 JAN 2019 to 31 JAN 2019

SNSET FOUR DEPARTURE (RNAV)

DALLAS, TEXAS

DALLAS LOVE FIELD (DAL)