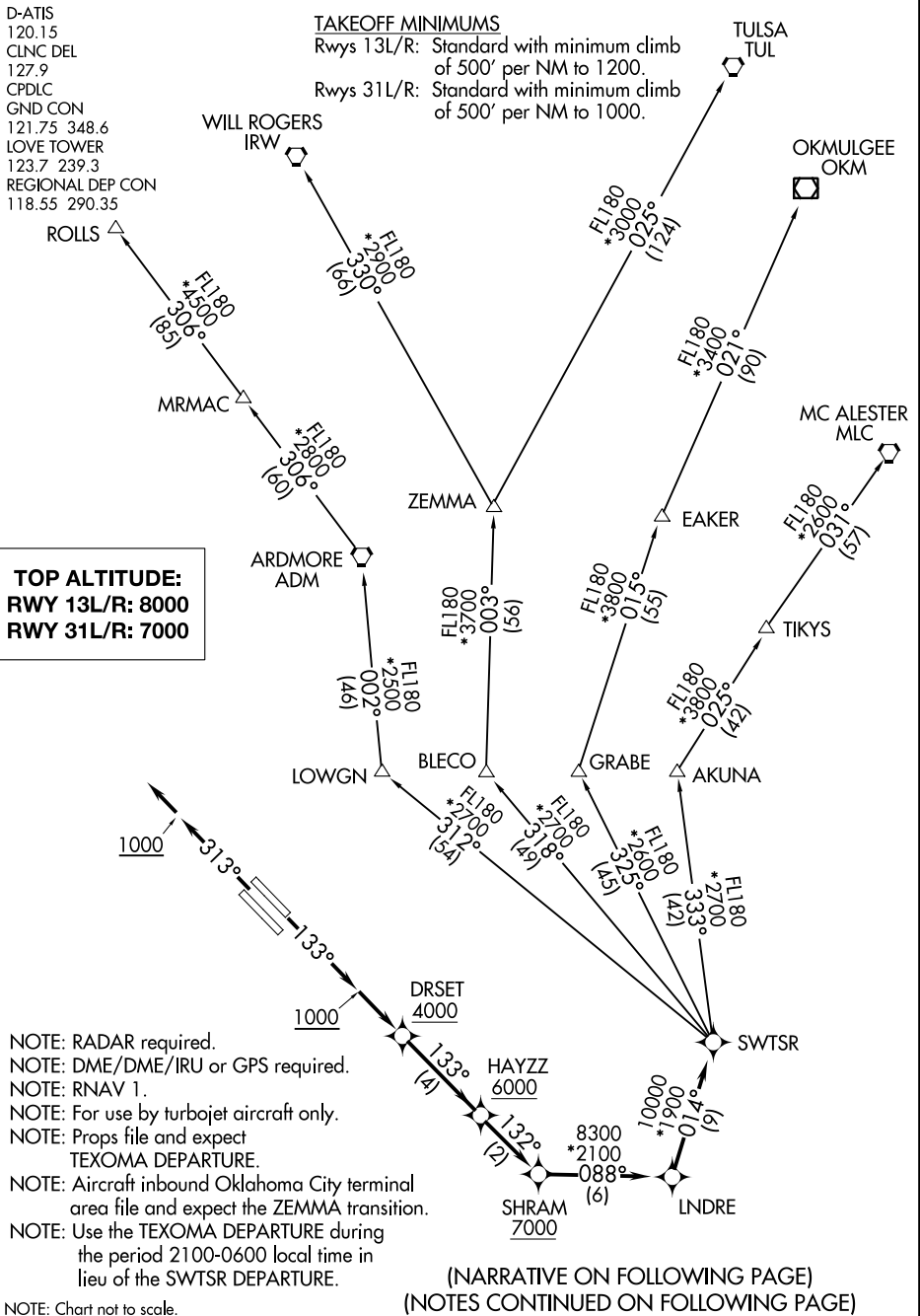


# SWTSR THREE DEPARTURE (RNAV)

D-ATIS  
120.15  
CLNC DEL  
127.9  
CPDLC  
GND CON  
121.75 348.6  
LOVE TOWER  
123.7 239.3  
REGIONAL DEP CON  
118.55 290.35

### TAKEOFF MINIMUMS

Rwys 13L/R: Standard with minimum climb of 500' per NM to 1200.  
Rwys 31L/R: Standard with minimum climb of 500' per NM to 1000.



**TOP ALTITUDE:**  
**RWY 13L/R: 8000**  
**RWY 31L/R: 7000**

- NOTE: RADAR required.
- NOTE: DME/DME/IRU or GPS required.
- NOTE: RNAV 1.
- NOTE: For use by turbojet aircraft only.
- NOTE: Props file and expect TEXOMA DEPARTURE.
- NOTE: Aircraft inbound Oklahoma City terminal area file and expect the ZEMMA transition.
- NOTE: Use the TEXOMA DEPARTURE during the period 2100-0600 local time in lieu of the SWTSR DEPARTURE.

(NARRATIVE ON FOLLOWING PAGE)  
(NOTES CONTINUED ON FOLLOWING PAGE)

SC-2, 03 JAN 2019 to 31 JAN 2019

SC-2, 03 JAN 2019 to 31 JAN 2019

# SWTSR THREE DEPARTURE (RNAV)