

# HI-ILS or LOC/DME RWY 10R

LOC/DME I-PDX <b>110.5</b> Chan <b>42</b>	APCH CRS <b>103°</b>	Rwy ldg <b>11,000</b> THRE <b>23</b> Arpt Elev <b>31</b>	JAL-330 [USAF]	PORTLAND INTL (KPDJ)
---	-------------------------	--	----------------	----------------------

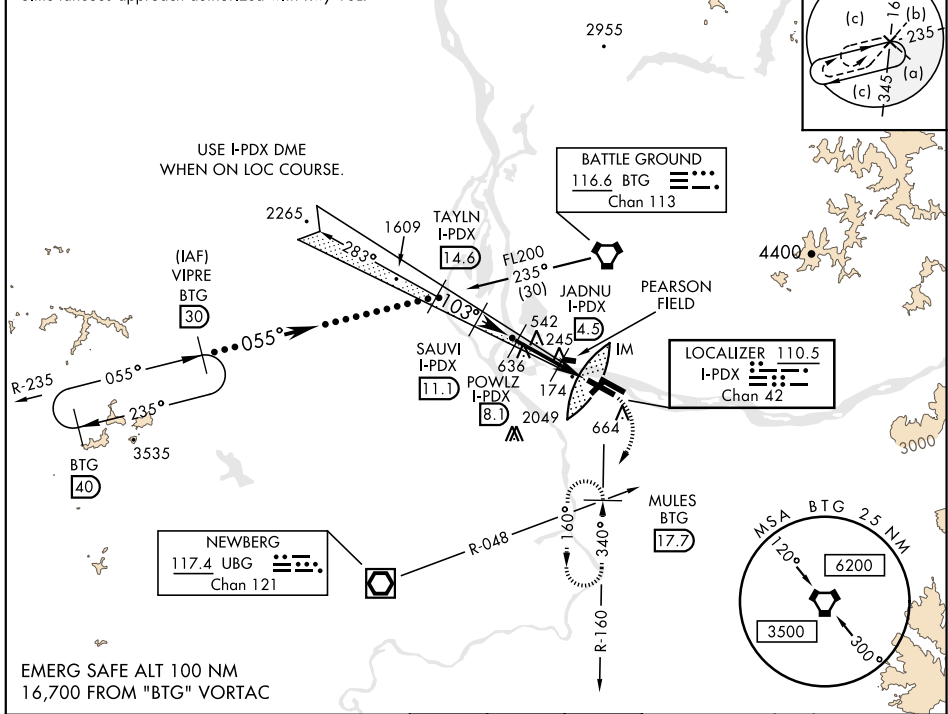
**▲** \* When ALS inop, increase RVR to 40 and vis to 3/4 mile.  
 \*\* When ALS inop, increase CAT CDE RVR to 60 and vis to 1 1/2 miles.

**▲** ALSF-2

MISSED APPROACH: Climb to 1100 then climbing right turn to 5000 on BTG VORTAC R-160 to MULES/BTG 17.7 DME and hold, continue climb-in-hold to 5000.

ATIS <b>128.35 269.9</b>	PORTLAND APP CON <b>118.1 284.6</b> (100°-279°) <b>124.35 299.2</b> (280°-099°)	PORTLAND TOWER <b>118.7 257.8</b> Rwy 10L-28R Rwy 3-21, 10R-28L	GND CON <b>121.9 348.6</b>	CLNC DEL <b>120.125 318.1</b>
-----------------------------	---	--	-------------------------------	----------------------------------

\*\*\* When VGSI rwy 28R inop, circling rwy 28R NA at night.  
 Simultaneous approach authorized with Rwy 10L.



VIPRE BTG (30) TAYLN I-PDX (14.6) SAUVI I-PDX (11.1) POWLZ I-PDX (8.1) JADNU I-PDX (4.9) MULES BTG (17.7)	1100	5000	ELEV 31	THRE 23
	BTG	BTG	from FAF	424 ±
VGSI and ILS glidepath not coincident. † LOC ONLY GS 3.00° TCH 53	3800	2900	103° 6.0 NM	
FL200 055° 103° 2000 860+ 3.6 NM 2.4 NM .1				
CATEGORY	C	D	E	
S-ILS 10R*	223/18	200	(200-3/4)	
S-LOC/DME 10R**	440/40	417	(500-3/4)	
CIRCLING***	760-2 729 (800-2)	980-3 949 (1000-3)	1140-3 1109 (1200-3)	

Amtd 7B 18OCT12

# HI-ILS or LOC/DME RWY 10R

NW-1, 03 JAN 2019 to 31 JAN 2019

NW-1, 03 JAN 2019 to 31 JAN 2019