

PORTLAND, OREGON

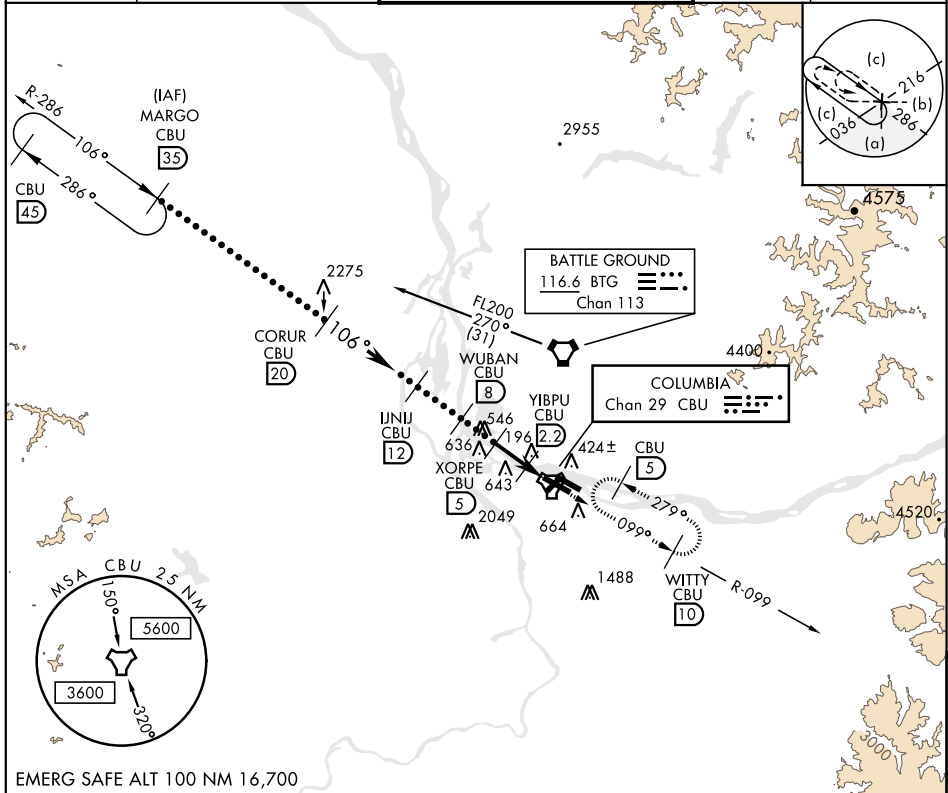
HI-TACAN RWY 10R

TACAN CBU Chan 29	APCH CRS 106°	Rwy ldg 11,000 TDZE 24 Arprt Elev 31	JAL-330 [USAF]	PORTLAND INTL (KPDX)
-----------------------------	-------------------------	---	----------------	----------------------

▼ * When ALS inop, increase CAT C RVR to 50 and vis to 1½ miles, CAT DE vis to 1¾ miles.
 ** When VGSI rwy 28R inop, circling rwy 28R NA at night.

ALSF-2 MISSED APPROACH: Climb to 4000 via CBU TACAN R-099 to WITTY/CBU 10 DME and hold, continue climb in holding.

ATIS 128.35 269.9	PORTLAND APP CON 118.1 284.6 (100°-279°) 124.35 299.2 (280°-099°)	PORTLAND TOWER 118.7 257.8 Rwy 10L-28R 123.775 251.125 Rwy 3-21, 10R-28L	GND CON 121.9 348.6	CLNC DEL 120.125 318.1
-----------------------------	---	--	-------------------------------	----------------------------------



MARGO R-286 CBU 35		CORUR CBU 20		INJU CBU 12		WUBAN CBU 8		XORPE CBU 5		YIBPU CBU 2.2		TACAN		WITTY CBU 10	
FL200		7500		3600		2500		1600		620		4000		ELEV 31	
VGSI and descent angles not coincident.		4000		WITTY CBU 10		ELEV 31		TDZE 24		106° to TACAN		96±		96±	
CATEGORY		C		D		E		96±		96±		96±		96±	
S-10R*		460/40 436 (500-¾)		460/50 436 (500-1)		1160-3		96±		96±		96±		96±	
CIRCLING**		760-2 729 (800-2)		1000-3 969 (1000-3)		1160-3 1129 (1200-3)		96±		96±		96±		96±	

PORTLAND, OREGON 45°35'N-122°36'W PORTLAND INTL (KPDX)

Amtd 1 18OCT12

HI-TACAN RWY 10R

NW-1, 03 JAN 2019 to 31 JAN 2019

NW-1, 03 JAN 2019 to 31 JAN 2019