

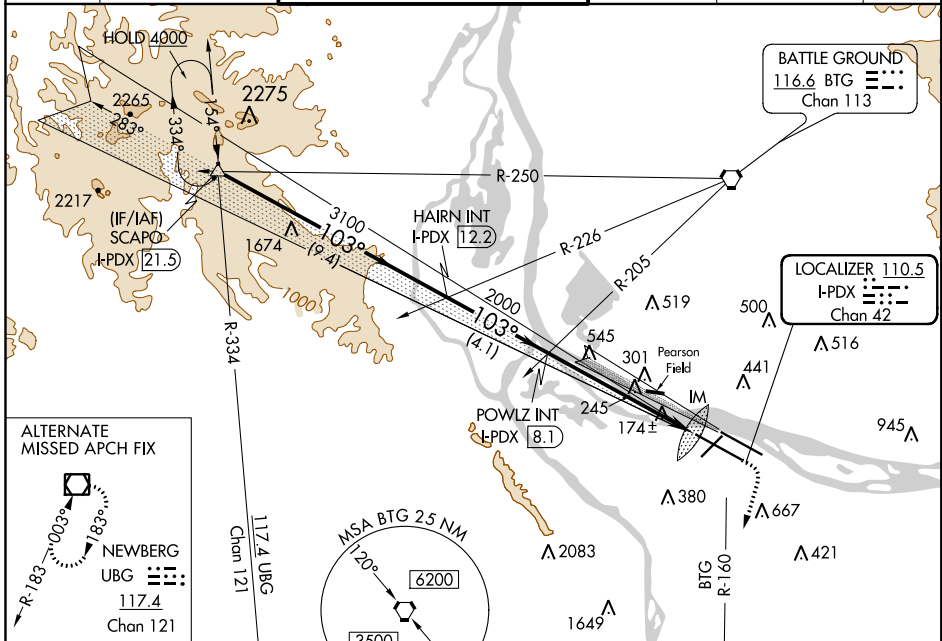
LOC/DME I-PDX 110.5 Chan 42	APP CRS 103°	Rwy Idg 11000 TDZE 24 Apt Elev 31
--	------------------------	--

ILS RWY 10R (SA CAT I)

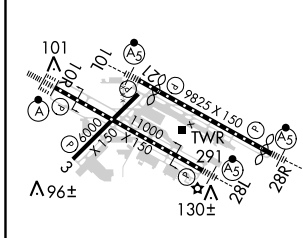
PORTLAND INTL (PDX)

<p>▼ Requires specific OPSPEC, MSPEC, or LOA approval and use of HUD to DH. Simultaneous approach authorized with Rwy 10L.</p> <p>▲ ALSF-2</p>	<p>MISSED APPROACH: Climb to 1100 then climbing right turn to 5000 on BTG VORTAC R-160 to MULES INT/BTG 17.7 DME and hold, continue climb-in-hold to 5000.</p>
--	--

D-ATIS 269.9	PORTLAND APP CON 124.35 299.2	PORTLAND TOWER Rwy 10L-28R 118.7 257.8 Rwys 3-21, 10R-28L 123.775 251.125	GND CON 121.9 348.6	CLNC DEL 120,125 318.1	CPDLC
------------------------	---	---	-------------------------------	----------------------------------	-------



ELEV 31	D	TDZE 24
---------	----------	---------



<p>SCAPO I-PDX [21.5]</p> <p>HAIRN INT I-PDX [12.2]</p> <p>POWLZ INT I-PDX [8.1]</p> <p>GS 3.00° TCH 53</p>	<p>VGSI and ILS glidepath not coincident (VGSI Angle 3.00/TCH 71).</p>	<p>1100</p> <p>5000</p> <p>MULES</p> <p>BTG R-160</p>
<p>4000</p> <p>3100</p> <p>2000</p> <p>1000</p> <p>103°</p>	<p>9.4 NM</p> <p>4.1 NM</p> <p>6 NM</p> <p>10.49'</p>	<p>IM</p>

CATEGORY	A	B	C	D
S-ILS 10R	RA 157/14 150 DA 174			

SA CATEGORY I ILS-SPECIAL AIRCREW & AIRCRAFT CERTIFICATION REQUIRED

REIL Rwys 3 and 21
TDZ/CL Rwy 10R
MIRL Rwy 3-21
HIRL Rwys 10L-28R and 10R-28L

NW-1, 03 JAN 2019 to 31 JAN 2019

NW-1, 03 JAN 2019 to 31 JAN 2019