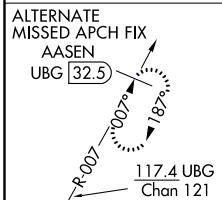
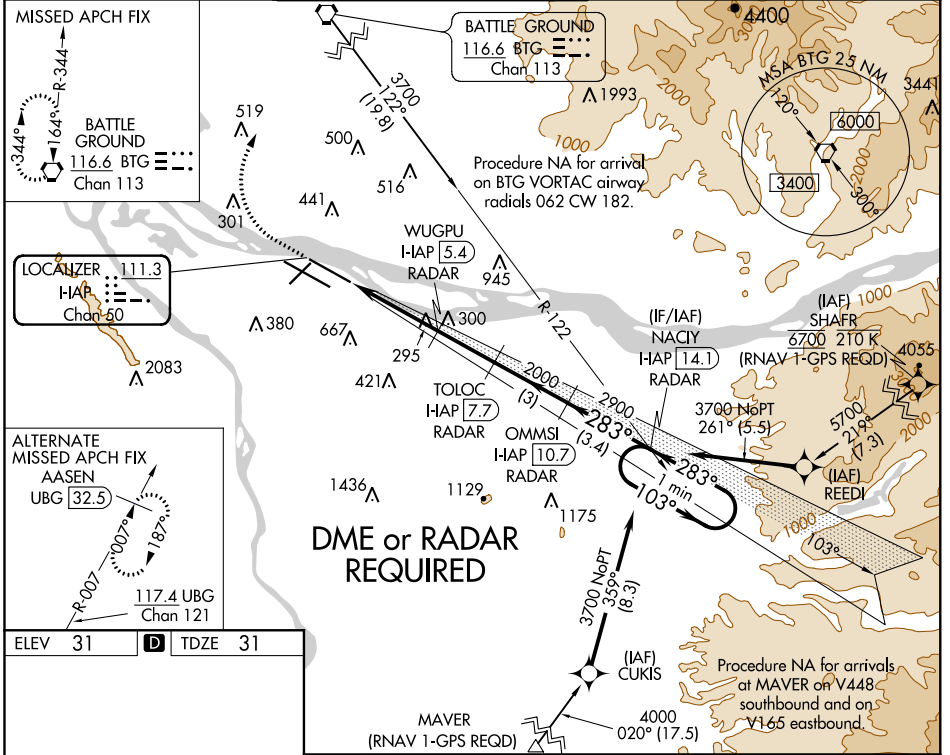


| | | |
|--|------------------------|--|
| LOC/DME I-HAP 111.3 Chan 50 | APP CRS 283° | Rwy Idg TDZE Apt Elev 9290 31 31 |
|--|------------------------|--|

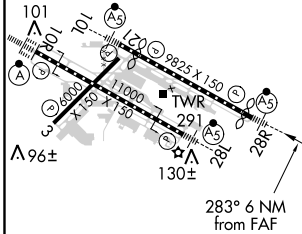
ILS or LOC RWY 28R

PORTLAND INTL (PDX)

| | | | | | | |
|---|---------------------|--|---|---|--|-------------------------------|
| <p>⚠ Simultaneous approach authorized. For inop ALS, increase S-ILS 28R Cat E visibility to RVR 4000; increase S-LOC 28R Cat E to 1½ SM.</p> | <p>MALSR</p> | <p>MISSED APPROACH: Climb to 600 then climbing right turn to 4200 direct BTG VORTAC and hold, continue climb-in-hold to 4200.</p> | | | | |
| | | D-ATIS 128.35 269.9 | PORTLAND APP CON 124.35 299.2 | PORTLAND TOWER Rwy 10L-28R 118.7 257.8 | Rwys 3-21, 10R-28L 123.775 251.125 | GND CON 121.9 348.6 |



| | | |
|---------|----------|---------|
| ELEV 31 | D | TDZE 31 |
|---------|----------|---------|



REIL Rws 3 and 21
TDZ/CL Rwy 10R
MIRL Rwy 3-21
HIRL Rws 10L-28R and 10R-28L

FAF to MAP 6 NM

| | | | | | |
|---------|------|------|------|------|------|
| Knots | 60 | 90 | 120 | 150 | 180 |
| Min:Sec | 6:00 | 4:00 | 3:00 | 2:24 | 2:00 |

| | | | | |
|--|----------|----------|--|----------------------------|
| 600 | 4200 | BTG | VGSI and ILS glidepath not coincident (VGSI Angle 3.00/TCH 70). | One Minute Holding Pattern |
| ↑ | ↪ | ⬠ | TOLOC I-HAP 7.7 WUGPU I-HAP 5.4 OMMSI I-HAP 10.7 NACIY I-HAP 14.1 | |
| *LOC only. | | | | |
| <p>HAP 1.7 (3.1) → 283° → 3700</p> <p>HAP 3.1 (2.3) → 283° → 2900</p> <p>HAP 5.4 (1.4) → 283° → 2000</p> <p>HAP 7.7 (1.4) → 283° → 1260*</p> | | | | |
| <p>MAVER (RNAV 1-GPS REQD)</p> <p>Procedure NA for arrivals at MAVER on V448 southbound and on V165 eastbound.</p> | | | | |

| | | | | | |
|-------------------|----------------------|----------------------|--------|---------------|-------------------------|
| CATEGORY | A | B | C | D | E |
| S-ILS 28R | 281/24 250 (300-½) | | | | |
| S-LOC 28R | 560/24 | 529 (600-½) | 560/55 | 529 (600-1) | |
| C CIRCLING | 720-1 689 (700-1) | 760-1 729 (800-1) | 1060-3 | 1029 (1100-3) | 1140-3 1109 (1200-3) |

NW-1, 03 JAN 2019 to 31 JAN 2019

NW-1, 03 JAN 2019 to 31 JAN 2019